

## Natural products targeting the synthesis of $\beta(1,3)$ -D-glucan and chitin of the fungal cell wall. Existing drugs and recent findings

M. Ángeles Curto<sup>a,1</sup>, Estefanía Butassi<sup>b,1</sup>, Juan C. Ribas<sup>a</sup>, Laura A. Svetaz<sup>b,\*</sup>, Juan C. G. Cortés<sup>a,\*</sup>

<sup>a</sup> Instituto de Biología Funcional y Genómica and Departamento de Microbiología y Genética, Consejo Superior de Investigaciones Científicas (CSIC)/Universidad de Salamanca, Salamanca, Spain

<sup>b</sup> Área Farmacognosia, Facultad de Ciencias Bioquímicas y Farmacéuticas, Universidad Nacional de Rosario, Suipacha 531, 2000 Rosario, Argentina

### ARTICLE INFO

#### Keywords:

Systemic fungal infection  
Fungal cell wall  
Cell wall synthases  
Bioactive natural products  
Plant extracts  
Antifungal drugs

### ABSTRACT

**Background:** During the last three decades systemic fungal infections associated to immunosuppressive therapies have become a serious healthcare problem. Clinical development of new antifungals is an urgent requirement. Since fungal but not mammalian cells are encased in a carbohydrate-containing cell wall, which is required for the growth and viability of fungi, the inhibition of cell wall synthesizing machinery, such as  $\beta(1,3)$ -D-glucan synthases (GS) and chitin synthases (CS) that catalyze the synthesis of  $\beta(1-3)$ -D-glucan and chitin, respectively, represent an ideal mode of action of antifungal agents. Although the echinocandins anidulafungin, caspofungin and micafungin are clinically well-established GS inhibitors for the treatment of invasive fungal infections, much effort must still be made to identify inhibitors of other enzymes and processes involved in the synthesis of the fungal cell wall.

**Purpose:** Since natural products (NPs) have been the source of several antifungals in clinical use and also have provided important scaffolds for the development of semisynthetic analogues, this review was devoted to investigate the advances made to date in the discovery of NPs from plants that showed capacity of inhibiting cell wall synthesis targets. The chemical characterization, specific target, discovery process, along with the stage of development are provided here.

**Methods:** An extensive systematic search for NPs against the cell wall was performed considering all the articles published until the end of 2020 through the following scientific databases: NCBI PubMed, Scopus and Google Scholar and using the combination of the terms “natural antifungals” and “plant extracts” with “fungal cell wall”.

**Results:** The first part of this review introduces the state of the art of the structure and biosynthesis of the fungal cell wall and considers exclusively those naturally produced GS antifungals that have given rise to both existing semisynthetic approved drugs and those derivatives currently in clinical trials. According to their chemical structure, natural GS inhibitors can be classified as 1) cyclic lipopeptides, 2) glycolipids and 3) acidic terpenoids. We also included nikkomycins and polyoxins, NPs that inhibit the CS, which have traditionally been considered good candidates for antifungal drug development but have finally been discarded after enduring unsuccessful clinical trials. Finally, the review focuses in the most recent findings about the growing field of plant-derived molecules and extracts that exhibit activity against the fungal cell wall. Thus, this search yielded sixteen articles, nine of which deal with pure compounds and seven with plant extracts or fractions with proven activity against the fungal cell wall. Regarding the mechanism of action, seven (44%) produced GS inhibition while five (31%) inhibited CS. Some of them (56%) interfered with other components of the cell wall. Most of the analyzed articles refer to tests carried out *in vitro* and therefore are in early stages of development.

**Abbreviations:** CS, chitin synthase; GPI, glycosylphosphatidylinositol; GS,  $\beta(1,3)$ -D-glucan synthase; NP, Natural product; PIR, proteins containing internal repeats; SEM, scanning electron microscopy; TEM, transmission electron microscopy; UDP-Glc, uridine-diphosphate-glucose; UDP-GlcNAc, uridine-diphosphate-N-acetylglucosamine.

\* Corresponding authors.

E-mail addresses: [lsvetaz@fbioyf.unr.edu.ar](mailto:lsvetaz@fbioyf.unr.edu.ar) (L.A. Svetaz), [cortes@usal.es](mailto:cortes@usal.es) (J.C.G. Cortés).

<sup>1</sup> Both authors contributed equally to this work.

<https://doi.org/10.1016/j.phymed.2021.153556>

Received 5 February 2021; Received in revised form 12 March 2021; Accepted 21 March 2021

Available online 27 March 2021

0944-7113/© 2021 The Authors.

Published by Elsevier GmbH. This is an open access article under the CC BY-NC-ND license

(<http://creativecommons.org/licenses/by-nc-nd/4.0/>).

**Conclusion:** This report delivers an overview about both existing natural antifungals targeting GS and CS activities and their mechanisms of action. It also presents recent discoveries on natural products that may be used as starting points for the development of potential selective and non-toxic antifungal drugs.

## Introduction

In the past three decades, the number of immunosuppressed patients affected by systemic fungal infections caused by species of *Aspergillus* and *Candida*, *Cryptococcus neoformans*, *Histoplasma capsulatum* and *Pneumocystis carinii* has dramatically increased (Cortés et al., 2019; Perfect, 2017; Vicente et al., 2003). Currently, four main classes of antifungal agents are used in patients with systemic mycoses: azoles (fluconazole, itraconazole, isavuconazole, posaconazole, and voriconazole) that block the biosynthesis of ergosterol by inhibiting the 14- $\alpha$ -demethylase, polyenes (conventional amphotericin B and its lipid formulations) that bind to the ergosterol of the fungal membrane, echinocandins (caspofungin, anidulafungin, and micafungin) that block the biosynthesis of the fungal cell wall  $\beta(1,3)$ -D-glucan by targeting the  $\beta(1,3)$ -D-glucan synthase (GS) and the pyrimidine analogues (5-flucytosine) that impede the synthesis of nucleic acids (Cortés et al., 2019; Perfect, 2017).

Natural products (NPs) and their semisynthetic derivatives have been traditionally an incomparable source of drugs to handle microbial infections. Accordingly, most clinical antimicrobials used today are derived from NPs (Roemer et al., 2011). However, while more than a dozen of clinically relevant antibacterial classes are naturally derived, only polyenes and echinocandins, among antifungals, are naturally produced, while azoles and pyrimidine analogues have a synthetic origin (Andriole, 1999; Roemer et al., 2011). The main reason for the low number of NPs classes developed into antifungal drugs is that fungal cells, as those of their human hosts, are eukaryotes and therefore, compounds that inhibit the synthesis of fungal proteins, DNA or RNA are likely to achieve the same effect in the patient, causing harmful secondary effects (Georgopapadakou and Walsh, 1994). Even approved antifungal drugs, such as polyenes, can hurt human cells by binding to cholesterol (Perfect, 2017).

Another reason is that before the 1970s fungal infections were easily treatable, and thus, the need for isolating new clinical antifungals at that time was reduced. During that period, antifungal treatment included exclusively two classes: potassium iodide and the polyenes nystatin and amphotericin B (Fig. 1). With the exception of the discovery of 5-flucytosine in the 1960s, there was not a real advance until the development of the azole class in the early 1970s (Perfect, 2017; Vicente et al., 2003). However, these antifungals have serious drawbacks due to their toxicity, low spectrum of activity and the emergence of strains resistant to them. Therefore, the discovery and clinical development of new antifungal

agents, preferably those NPs exhibiting novel mechanisms of action, are an urgent need (Cortés et al., 2019; Perfect, 2017; Vicente et al., 2003).

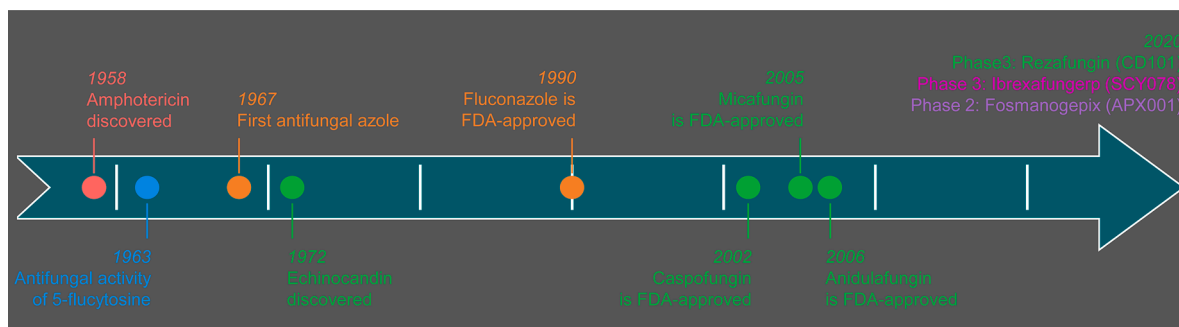
The wall structure surrounding the cell is crucial for the survival of the fungus (Fig. 2). Importantly, this structure is lacking in human host cells, and consequently, antifungal drugs inhibiting the synthesis of the cell wall polysaccharides are generally less harmful than azoles or polyenes (Perfect, 2017). Therefore, the enzymes that synthesize essential cell wall polysaccharides, such as  $\beta(1,3)$ -D-glucan and chitin, are considered an extraordinary target for the discovery of new NPs with antifungal activity that later may serve as platforms to make new drugs (Cortés et al., 2019; Ribas et al., 2014; Roemer et al., 2011). In addition, it is interesting to note that, the newest classes of clinical antifungals that inhibit the GS (echinocandin and enfumafungin derivatives) or the traditional inhibitors of the chitin synthase (CS) (nikkomycins and polyoxins) are NPs obtained from fungi.

This review first describes the fundamentals of the fungal cell wall architecture and biosynthesis, to then discuss an anthology of the main NPs derived from microorganisms that have originated the established antifungal drugs currently used to treat invasive mycoses and that have the cell wall as target for their antifungal activity. Finally, we make emphasis in the latest research on the discovery, chemical characterization and development stage of plant extracts, fractions, and compounds capable of inhibiting the synthesis of the most important cell wall components.

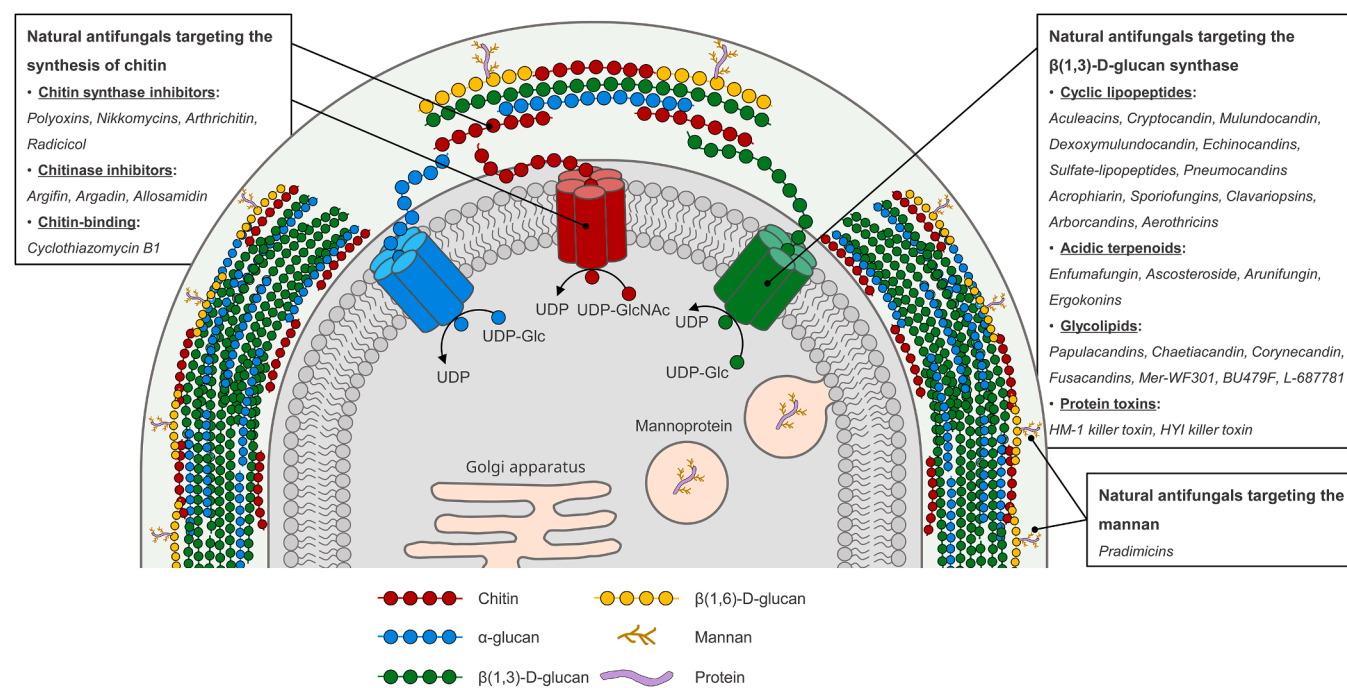
## Fungal cell wall fundamentals: composition and biosynthesis

The wall structure encasing the fungal cells grants the mechanical strength needed for protection against the internal osmotic pressure, that otherwise would cause cell lysis by pushing and breaking the plasma membrane (Fig. 2). However, the cell wall is not merely a rigid envelope, it must exhibit some elasticity for allowing its remodeling during the various morphogenetic processes that happen along the life cycle of the fungus, such as cell growth, cell separation or cell specialization (reviewed by Cortés et al., 2019; Ribas et al., 2014).

The cell wall is mainly comprised of polysaccharides (70-90%) and heavily glycosylated proteins (10-30%). Although composition varies between different fungal species, most walls exhibit a similar structure. Thus, transmission electron microscopy (TEM) shows two cell wall layers: the inner layer (less electrodense) contains a fibrillar network of  $\beta(1,3)$ -D-glucan,  $\beta(1,6)$ -D-glucan and chitin, with some species having also many fibrils of  $\alpha(1,3)$ -D-glucan. The outer layer (more electrodense)



**Fig. 1.** Timeline showing major landmarks in the discovery and development of the four most important classes of antifungals utilized as a therapy for invasive fungal infections: the polyene amphotericin B (red), the pyrimidine analogue 5-flucytosine (blue), triazoles (orange) and echinocandins (green). The scheme also shows those compounds currently in clinical development: the echinocandin rezafungin (green), the enfumafungin-derivative ibrexafungerp (pink) and the inhibitor of the glycosylphosphatidylinositol synthesis fosmanogepix (purple).



**Fig. 2.** Schematic representation of the assembly and structure of a typical fungal cell wall (adapted from Cabib and Arroyo, 2013). In most fungal species, the inner layer of the cell wall is composed of polysaccharides, such as  $\beta(1,3)$ -D-glucan,  $\beta(1,6)$ -D-glucan and chitin, with many species having also  $\alpha$ -glucan. While  $\beta(1,3)$ -D-glucan, chitin and  $\alpha$ -glucan are synthesized in the plasma membrane by integral membrane enzymes, the mechanism and location of  $\beta(1,6)$ -D-glucan synthesis is currently unknown. Mannoproteins are transferred in vesicles from the Golgi apparatus to the plasma membrane, and then attached to the outer layer of the cell wall. Well established natural antifungals targeting  $\beta(1,3)$ -D-glucan, chitin and mannan are also depicted.

is more variable between fungal species and includes the mannoproteins (Fig. 2) (reviewed by Cortés et al., 2019; Gow et al., 2017; Latge, 2007).

Except for the  $\beta(1,6)$ -D-glucan, whose location of synthesis is unknown, the linear chains of  $\beta(1,3)$ -D-glucan, chitin and  $\alpha(1,3)$ -D-glucan are initially built at the plasma membrane by synthases and extruded to the periplasmic space (Fig. 2), where they later generate a tightly linked network responsible for the mechanical force of the cell wall (reviewed by Cabib and Arroyo, 2013; Gow et al., 2017).

#### $\beta(1,3)$ -D-glucan

The  $\beta(1,3)$ -D-glucan embodies the 50 to 55% of the total cell wall polysaccharides in yeasts and reaches the 30% in filamentous fungi (Gastebois et al., 2009; Lipke and Ovalle, 1998; Orlean, 2012; Pérez et al., 2016). The cell wall glucans are mostly composed of glucose units connected through  $\beta(1,3)$  links (65–90%), although there are also some  $\beta(1,6)$ ,  $\beta(1,4)$ ,  $\alpha(1,3)$  and  $\alpha(1,4)$  glucans (see below). The chains of  $\beta(1,3)$ -D-glucan exhibit a worm-like coil conformation that confers flexibility and tensile strength to the cell wall. Normally, the  $\beta(1,3)$ -D-glucan is composed by a backbone of  $\beta(1,3)$ -D-glucan branched with lateral chains of  $\beta(1,6)$ -D-glucan (reviewed by Du et al., 2019; Klis et al., 2002; Lesage and Bussey, 2006).

In all known fungi the linear  $\beta(1,3)$ -D-glucan chains are synthesized by the enzyme complex GS, which is located in the plasma membrane (Cabib and Arroyo, 2013; Klis et al., 2002; Lesage and Bussey, 2006). Antifungals classes (Fig. 2 and Table 1), such as cyclic lipopeptides (echinocandins), glycolipids (papulacandins) and acidic terpenoids (enfumafungin), inhibit the assembly of the  $\beta(1,3)$ -D-glucan by selectively targeting the enzyme GS in a non-competitive way (Douglas, 2001). The GS complex uses uridine-diphosphate-glucose (UDP-Glc) as substrate and catalyze the formation of linear  $\beta(1,3)$ -D-glucan chains (Fig. 2). The GS comprises at least two subunits: a regulatory GTP-binding subunit located in the cytosol and a catalytic subunit bound to the plasma membrane (Kang and Cabib, 1986; Kang et al., 1986). The GTPase Rho1 acts as the GS regulatory subunit (Arellano et al., 1996;

Drgonova et al., 1996), while the family of integral membrane proteins Fks/Gls/Bgs functions as the GS catalytic subunits (reviewed by García Cortés et al., 2016; Gow et al., 2017; Pérez et al., 2016).

Once synthesized and branched with side chains of  $\beta(1,6)$ -D-glucan, the  $\beta(1,3)$ -D-glucan can be connected to other glucans, to chitin or to mannoproteins, delivering a great mechanical force to the wall, which is essential for maintaining the fungal cell integrity (Klis et al., 2002; Kollar et al., 1995; Kollar et al., 1997; Lesage and Bussey, 2006).

#### $\beta(1,6)$ -D-glucan

The content of  $\beta(1,6)$ -D-glucan in the cell wall accounts from 5% to 21% depending on the fungal species (Klis et al., 1997; Lesage and Bussey, 2006; Lipke and Ovalle, 1998; Manners et al., 1973; Orlean, 2012). In contrast to the synthesis of the other glucans and chitin, the location and how is achieved the synthesis of  $\beta(1,6)$ -D-glucan are presently unknown (Fig. 2). The isolation of *KRE* mutants able to survive and grow in the presence of the K1 killer toxin, a protein that kills the yeast cells by primary attaching to the  $\beta(1,6)$ -D-glucan (Hutchins and Bussey, 1983), allowed the identification of several genes involved in the synthesis of  $\beta(1,6)$ -D-glucan in *Saccharomyces cerevisiae* and the corresponding paralogues in some pathogenic fungi (Aimanianda et al., 2009; Gilbert et al., 2010; Herrero et al., 2004; Page et al., 2003).

*KRE* genes have been also related to the production of  $\beta(1,3)$ -D-glucan, and the other way around, *FKS* genes in the production of  $\beta(1,6)$ -D-glucan (Dijkgraaf et al., 2002). The  $\beta(1,6)$ -D-glucan chains are shorter than those of the  $\beta(1,3)$ -D-glucan, and function as a cell wall adhesive that covalently interconnects to  $\beta(1,3)$ -D-glucan, chitin, and mannoproteins (Kollar et al., 1997).

#### Chitin

Chitin is a homopolymer composed of N-acetylglucosamine monomers linked through  $\beta(1,4)$  bonds. The enzyme chitin synthase (CS) use uridine-diphosphate-N-acetylglucosamine (UDP-GlcNAc) as substrate

**Table 1**  
Natural inhibitors of the  $\beta(1,3)$ -D-glucan synthase activity isolated from fungi

Compound	Origin	Reference
<b>Cyclic lipopeptides</b>		
<b>Hexapeptides</b>		
Aculeacin A-G	<i>Aspergillus aculeatus</i> <sup>a</sup>	(Mizuno et al., 1977; Satoi et al., 1977)
Cryptocandin	<i>Cryptosporiopsis quercina</i> <sup>b</sup>	(Strobel et al., 1999)
Mulundocandin	<i>Aspergillus mulundensis</i> <sup>c</sup>	(Roy et al., 1987)
Deoxymulundocandin	<i>Aspergillus mulundensis</i> <sup>c</sup>	(Mukhopadhyay et al., 1992)
Echinocandins B-D	<i>Aspergillus delacroixii</i> <sup>d</sup> <i>Aspergillus pachycristatus</i> <sup>e</sup> <i>Aspergillus nidulans</i>	(Benz et al., 1974; Hodges et al., 1994; Keller-Juslén et al., 1976; Traber et al., 1979)
Catechol-sulfate lipopeptides	<i>Coleophoma crateriformis</i> <i>Coleophoma empetri</i> <sup>f</sup> <i>Chalara</i> sp. <i>Phialophora</i> cf. <i>hyalina</i> <sup>g</sup>	(Hino et al., 2001; Iwamoto et al., 1994)
Pneumocandin A-E	<i>Glaea lozoyensis</i> <sup>h</sup> <i>Pezicula</i> sp. <sup>i</sup> <i>Cryptosporiopsis</i> sp.	(Morris et al., 1994; Noble et al., 1991; Schwartz et al., 1989; Schwartz et al., 1992)
Acrophiarin	<i>Penicillium arenicola</i> <sup>j</sup>	(Dreyfuss, 1986)
Sporiofungins A-C	<i>Pezicula radicecola</i>	(Dreyfuss, 1986)
<b>Nonapeptide</b>		
Clavariopsins A-B	<i>Clavariopsis aquatica</i>	(Kaida et al., 2001)
<b>Decapeptide</b>		
Arborcandins A-F	Filamentous fungus strain SANK 17397	(Ohyama et al., 2000)
<b>Dodecapeptide</b>		
Aerothricins	Fungal species No. 11243 Deuteromycotina spp	(Fujie et al., 2000a)
<b>Acidic terpenoids</b>		
Enfumafungin	<i>Hormonema carpetanum</i>	(Peláez et al., 2000)
Ascosteroside	<i>Ascotricha amphitricha</i> <i>Mycoleptodiscus atromaculans</i>	(Gorman et al., 1996; Vicente et al., 2001)
Arunifungin	<i>Arthrimum arundinis</i> <sup>k</sup> <i>Arthrimum phaeospermum</i> <i>Coelomyces</i> undetermined <i>Leotiales anamorphs</i>	(Cabello et al., 2001)
Ergokonin A-C	<i>Trichoderma koningii</i> <i>Trichoderma viride</i> <i>Trichoderma longibrachiatum</i> <i>Fusarium</i> sp LN-11 <i>Tolyposcladium inflatum</i>	(Augustiniak et al., 1991; Grafe et al., 1991; Kumeda et al., 1994; Vicente et al., 2001; Yang et al., 2012)
<b>Glycolipids</b>		
Papulacandin A-E	<i>Papularia sphaerosperma</i>	(Traxler et al., 1977)
Chaetiacandin	<i>Monochaetia dimorphospora</i>	(Komori et al., 1985)
Corynecandin	<i>Coryneum modonium</i>	(Gunawardana et al., 1997)
Fusacandin A-B	<i>Fusarium sambucinum</i>	(Jackson et al., 1995)
Mer-WF301	<i>Phialophora cyclaminis</i>	(Kaneto et al., 1993)
BU479F	<i>Gilmaniella</i> sp	(Aoki et al., 1993)
L-687,781	<i>Dictyochaeta simplex</i>	(VanMiddlesworth et al., 1991)

<sup>a</sup> Formerly was considered as a variety of *Aspergillus japonicus* (Hamari et al., 1997)

<sup>b</sup> Imperfect stage of *Pezicula cinnamomea* (Strobel et al., 1999)

<sup>c</sup> Previously named as *Aspergillus sydowi* var. *mulundensis* (Bills et al., 2016)

<sup>d</sup> Previously named as *Aspergillus nidulans* var. *echinulatus* (Huttel et al., 2016)

<sup>e</sup> Previously named as *Aspergillus rugulosus* or *Aspergillus nidulans* var. *roseus* (Huttel et al., 2016)

<sup>f</sup> Synonym of *Coleophoma cylindrospora* (Crous and Groenewald, 2016)

<sup>g</sup> Previously identified as *Tolyposcladium parasiticum*, synonym of *Pochonia parasitica* (Yue et al., 2015)

<sup>h</sup> Previously identified as *Zalerion arboricola* (Bills et al., 1999)

<sup>i</sup> Teleomorph state of the anamorph genus *Cryptosporiopsis* (Noble et al., 1991)

<sup>j</sup> Previously identified as *Acrophialophora limonispora* (Lan et al., 2020)

<sup>k</sup> Arthirium state of *Apiospora montagnei* (Cabello et al., 2001)

and catalyze the formation of linear microfibrils of chitin into the periplasmic space outside of the plasma membrane (Fig. 2). *S. cerevisiae* contains three CS activities (CSI, CSII, and CSIII), with the corresponding catalytic subunits being Chs1, Chs2 and Chs3, respectively (reviewed by Cabib et al., 2001; Roncero et al., 2016). Traditional antifungals (Fig. 2), such as the structural analogues of the UDP-GlcNAc, polyoxins and nikkomyins, are competitive inhibitors that block the CS activity by joining to catalytic site of the enzymes (Cabib, 1991).

Besides those genes described in the budding yeast, many other CS sequences have been found in over 200 fungal species. The number of CS genes identified per fungal species varies from two to nine, and considering the changes of their protein sequences, CSs have been grouped in two large families, subdivided in seven classes (Roncero et al., 2016). However, the diversity of CS enzymes suggests redundant functions of CS making complicated to find a functional differentiation between the seven classes (Lenardon et al., 2010).

Chitin comprises from 1 to 3% of the total cell wall polysaccharides in yeasts and ranges from 10 to 20% in molds (Bowman and Free, 2006; Kapteyn et al., 1997; Lesage and Bussey, 2006). Because of its rigidity, chitin is an important structural polysaccharide, being essential for cell wall organization and integrity, where it acts as a framework for the assembly of other wall components (Roncero et al., 2016).

### Mannoproteins

The outer layer wall contains a large amount of proteins highly modified with carbohydrates both N- and O-linked, which are principally or entirely constituted by mannose units to form a polysaccharide known as mannan. Naturally produced pradimicins displays antifungal activity by binding to the wall mannan (Fig. 2). In *S. cerevisiae* and *Candida albicans* the layer of mannoproteins can reach up to 50% of the wall dry weight. Mannoproteins are linked through glycosylphosphatidylinositol (GPI) to the  $\beta(1,6)$ -D-glucan and the underlying fibrils of interconnected chitin- $\beta(1,3)$ -D-glucan. In other cases, the  $\beta(1,3)$ -D-glucan is covalently bond to the external layer via proteins containing internal repeats (PIR) (Ecker et al., 2006; Mrsa et al., 1997; Mrsa and Tanner, 1999; Ruiz-Herrera et al., 2006).

The mannoproteins are modified with N-glycans, O-manno-oligosaccharides and a GPI remnant as they travel from endoplasmic reticulum to Golgi apparatus in the secretion route (Fig. 2). Initially, these structures are adhered to proteins in the luminal side of the endoplasmic reticulum and then, extended and modified in the Golgi to originate the mannoproteins, that finally will be either deposited in the plasma membrane or secreted to the periplasm and merged with other wall components (reviewed by Orlean, 2012).

One of the new antifungals currently in clinical trials (Fig. 1), APX001 (or fosmanogepix), blocks the incorporation of mannoproteins into the outer layer of the cell wall. This antifungal drug selectively inhibits the production of GPI by targeting the fungal Gwt1, an acyltransferase enzyme that is essential for GPI processing in the luminal membrane of the endoplasmic reticulum (Mutz and Roemer, 2016). Similarly, a search of synthetic or NP collections have detected additional compounds that target either Gwt1 or Mcd4, an ethanolamine phosphotransferase, which is also essential for the synthesis of GPI (Mann et al., 2015).

$\alpha(1,3)$ -D-glucan

Although this wall polysaccharide is not universally detected along the fungal kingdom, per example it lacks in budding yeasts such as *S. cerevisiae* or *C. albicans*, the internal wall layer of important fungal pathogens, such as *Aspergillus* spp., *C. neoformans* or *H. capsulatum* among others, contains fibrils of  $\alpha(1,3)$ -D-glucan. In these fungi, the total content of this polysaccharide ranges from 28% to 46% (Grun et al., 2005; Henry et al., 2011; Pérez et al., 2016). In the fission yeast *Schizosaccharomyces pombe* this polymer exhibits two linear chains, each comprising approximately 120–130 monomers of glucose connected by  $\alpha(1,3)$  bonds. The two chains are interconnected at the reducing ends by a bridge of about 10 units of  $\alpha(1,4)$ -D-linked glucose (Grun et al., 2005).

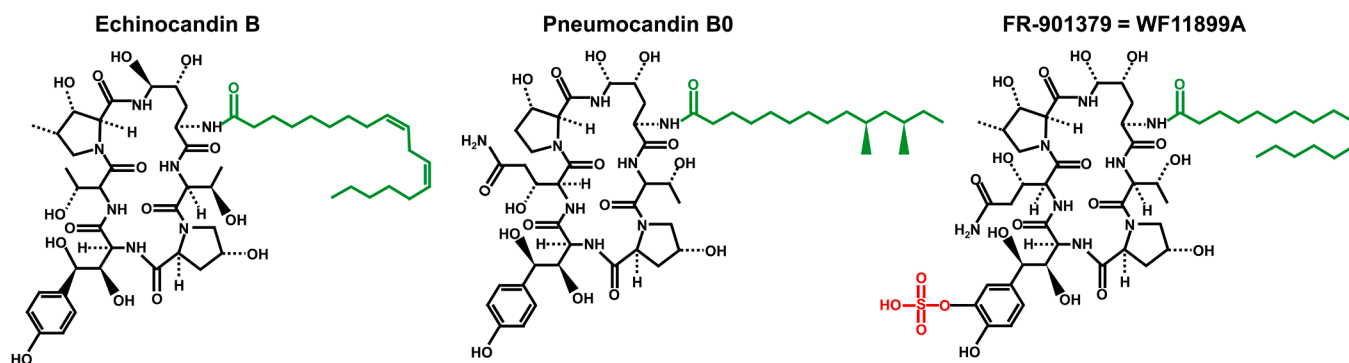
As for the production of  $\beta(1,3)$ -D-glucan and chitin, the synthesis of  $\alpha(1,3)$ -D-glucan has place in the plasma membrane (Fig. 2). The corresponding catalytic subunit contains a putative synthase domain located in the cytosolic side of the plasma membrane, multiple

transmembrane domains and a transglycosylase domain situated in the periplasmic side of the plasma membrane (Vos et al., 2007). None  $\alpha(1,3)$ -D-glucan synthase activity has been still detected *in vitro*. The first gene encoding for the  $\alpha(1,3)$ -D-glucan synthase was found in the fission yeast, where it is essential for cell wall integrity and the yeast survival (Cortés et al., 2012; Hochstenbach et al., 1998; Katayama et al., 1999). In pathogenic fungi, the absence of genes encoding the  $\alpha(1,3)$ -D-glucan synthase causes a reduction or loss of virulence (Beauvais et al., 2013; Edwards et al., 2011; Reese et al., 2007).

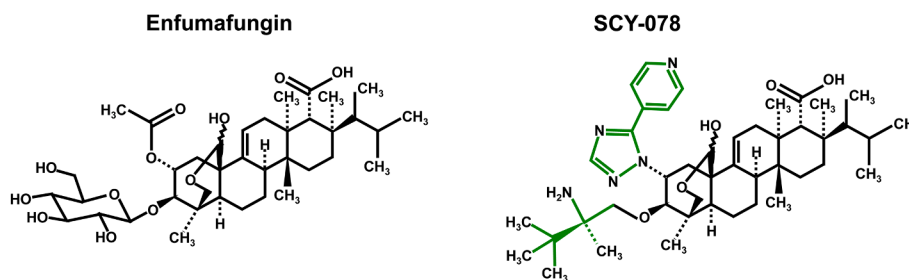
## Natural antifungals targeting the cell wall

In this section, we will first specifically describe clinically well-established GS inhibitors or in an advanced step of development for the treatment of invasive fungal infections (cyclic lipopeptides and acidic terpenoids). We also described other natural inhibitors that exhibit a strong inhibitory activity against the GS (glycolipids) or CS

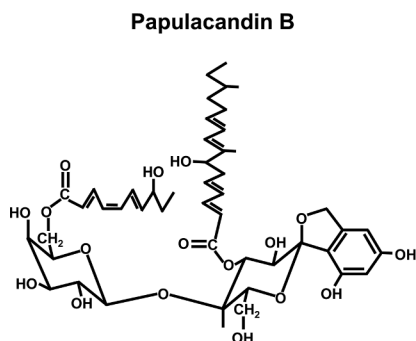
## A Cyclic lipopeptides



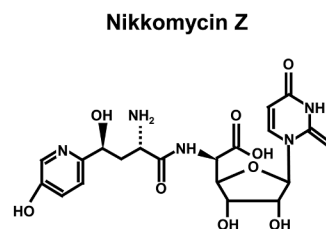
## B Acidic Terpenoids



## C Glycolipids



## D Nikkomicins



**Fig. 3.** Chemical structures of well-developed natural antifungals that block the synthesis of  $\beta(1,3)$ -D-glucan and chitin of the fungal cell wall. (A) Echinocandin B, pneumocandin B0 and FR-901379 are hexapeptides, precursors of the clinical echinocandins anidulafungin, micafungin and caspofungin, respectively. Alifatic side chains are represented in green and the sulfate ester in red. (B) Enfumafungin is an acidic terpenoid forerunner of ibrexafungerp (SCY-078) which is currently in phase 3 of clinical development. Structural differences between natural enfumafungin and semisynthetic ibrexafungerp are depicted in green. (C) Papulacandin B is a glycolipid. All of them inhibit  $\beta(1,3)$ -D-glucan synthesis. (D) Nikkomycin Z is an inhibitor of chitin synthesis.

(polyoxins and nikkomycins) activities, but that have not been developed into antifungal drugs yet. For a more detailed revision of other naturally derived, semisynthetic, and synthetic antifungals that target the cell wall polysaccharides (Fig. 2), an interesting and comprehensive review has been recently published by (Liu et al., 2020). We will also detail the recent discoveries on NPs derived from plants that target the fungal cell wall. Although Phytomedicine is devoted to NPs coming from the vegetal kingdom, we included well-developed natural antifungals coming from fungi and bacteria to have an overview and to draw a perspective on the role played by the plant compounds in the development of new antifungal drugs targeting the fungal cell wall.

#### Existing natural $\beta(1,3)$ -D-glucan synthase inhibitors

This class of antifungals blocks the biosynthesis of the fungal  $\beta(1,3)$ -D-glucan by inhibiting the GS enzyme (Fig. 2), which increases the osmotic sensitivity of the cells and cause cell lysis (Douglas et al., 1994; Pérez et al., 1981; Yamaguchi et al., 1985). This group of inhibitors is composed by several kinds of compounds not necessary chemically related. The three main classes are cyclic lipopeptides (echinocandins), acidic terpenoids (enfumafungins) and glycolipids (papulacandins). All of them are NPs derivatives that act non-competitively with the enzyme substrate UDP-Glc (Douglas, 2001; Perlin, 2019).

#### Cyclic lipopeptides

These compounds are non-ribosomal peptides, composed by a cyclic core containing a variable number of non-proteinogenic amino acids, and attached to a fatty acid side chain. The main group comprises the cyclic hexapeptides (Table 1 and Fig. 3A), which are also known as echinocandin-like antifungals, or simply echinocandins, due to echinocandins comprise a specific type of hexapeptides (Wang et al., 2017). Echinocandins are fungicidal against *Candida* spp. and fungistatic against *Aspergillus* spp., (Patil and Majumdar, 2017) however, they are ineffective against *C. neoformans* (Cao et al., 2019).

Echinocandins are demonstrated to be non-competitive inhibitors of the GS, this is the reason why all of them are assumed to exert their antifungal activity via blockage of  $\beta(1,3)$ -D-glucan synthesis (Fig. 2) (Hawser et al., 2001; Kurtz and Douglas, 1997). Moreover, antifungals with a common mechanism of action lead to comparable effects at the proteome level (Bruneau et al., 2003). It seems that this inhibition requires the uptake of echinocandin molecules by sensitive cells. It is described that at concentrations of less than 1 mg/ml, a high-affinity facilitated-diffusion transporter mediates the uptake of caspofungin in *C. albicans*. On the other side, higher concentrations enter the cell in a non-specific way (Paderu et al., 2004). However, because the GS catalytic subunit is an integral membrane protein (Fig. 2), it continues unclear where echinocandins exactly attach to the GS (Denning, 2003; Odds et al., 2003). Thus, although it is clear that these inhibitors target the catalytic subunit of the GS, their inhibitory effects on  $\beta(1,3)$ -D-glucan synthesis might not involve the catalytic subunit itself (Odds et al., 2003). For example, it has been proposed that the acyl side chain of the echinocandins may insert into the plasma membrane (Chen et al., 2011). In agreement, inhibitors of the synthesis of the  $\beta(1,3)$ -D-glucan also decrease plasma membrane ergosterol and lanosterol (Pfaller et al., 1989).

Natural echinocandins cannot be used in clinical treatments due to their toxicity and low solubility. On the other hand, semisynthetic echinocandins, such as caspofungin, micafungin and anidulafungin, are clinically approved as the first-line treatment of some invasive mycoses (Balkovec et al., 2014; Cortés et al., 2019; Emri et al., 2013). Also, rezafungin, another semisynthetic echinocandin-derivative with improved physicochemical properties, is presently in advanced clinical development (Fig. 1). Besides echinocandins, fungi also produce cyclic nonapeptides, decapeptides and dodecapeptides exhibiting antifungal activity (Table 1) (Huttel, 2017; Yue et al., 2015).

#### Cyclic lipopeptides: Echinocandins

Echinocandins are effective against yeasts, especially *C. albicans*, causing rapid lysis in growing cells (Cassone et al., 1981). This class of antifungals was launched with the discovery of echinocandin B in the 1970s (Fig. 1, Fig. 3A and Table 1). This natural antifungal was widely studied in the next years due to its potent fungicidal properties. However, since echinocandin B also presented a strong hemolytic activity, it was necessary to develop some analogues by modification of its side chain to reduce its toxicity (Emri et al., 2013). As a result, cilofungin was the first echinocandin B-derivative candidate to be developed into a drug, but it was discarded because of its low solubility in water. Thus, some other modifications were carried out (Debono et al., 1995). Consequently, anidulafungin was later approved in 2006 (Fig. 1) as a clinical drug with superior solubility properties than those of echinocandin B and cilofungin (Ye et al., 2020). In addition, rezafungin, an anidulafungin derivative, is currently in phase 3 of clinical trials (Huttel, 2020). Finally, new semisynthetic analogs and new methodologies for respectively improving the physicochemical properties or the production of the echinocandin B nucleus have been recently described (Hu et al., 2020; Min et al., 2019; Niu et al., 2020; Shivakumar et al., 2019; Zhu et al., 2020).

#### Cyclic lipopeptides: Pneumocandins

Pneumocandins (A<sub>0</sub>-A<sub>4</sub>, B<sub>0</sub>, B<sub>2</sub>, C<sub>0</sub> and D<sub>0</sub>) are acylated cyclic hexapeptides (Fig. 3A and Table 1). These NPs display a potent activity against *Candida* spp. and *P. carinii* (Adefarati et al., 1992; Morris et al., 1994; Schwartz et al., 1992). In 2002, caspofungin was the first echinocandin approved for clinical use in both the United States and the European Union (Fig. 1). This antifungal drug is a semisynthetic derivative of pneumocandin B<sub>0</sub> by insertion of supplementary amino groups in the hexapeptide nucleus. These modifications increased both the solubility of the molecule and the effectiveness against pathogenic yeasts. Caspofungin also has lower rates of nephrotoxicity, and drug-related adverse and infusion-related events (Denning, 2003; Emri et al., 2013; Sable et al., 2008; Vicente et al., 2003).

#### Cyclic lipopeptides: Catechol-sulfate lipopeptides

The main characteristic of this group is the presence of a sulphate ester at the cyclic hexapeptide nucleus (Fig. 3A and Table 1) which confers them excellent water solubility (Iwamoto et al., 1994). Like other echinocandins, sulfate lipopeptides present antifungal activities against *A. fumigatus* and *C. albicans* (Fujie et al., 2000b). In addition, they are effective against the human pathogen *Pneumocystis carinii* (Furuta et al., 1998). In spite of these good pharmacological properties, they also have hemolytic potential (Iwamoto et al., 1994), therefore they were used as start point for the development of new semisynthetic analogs, such as micafungin, which was generated from FR901379 (also named as WF11899A) by replacement of the fatty acid side chain with an aromatic complex (Tomishima et al., 1999) and approved for the treatment of candidemia in 2005 (Fig. 1) (Ye et al., 2020).

#### Cyclic lipopeptides: Other cyclic hexapeptides

In this section, we describe briefly other natural cyclic lipopeptides related to echinocandins that have shown to exhibit antifungal activity against diverse pathogenic fungi (Table 1). Aculeacins exhibit chemical and biological properties like those of echinocandin B (Mizuno et al., 1977). Aculeacin A is fungicide against the yeasts *Candida* spp. (except for *C. tropicalis*), *Saccharomyces* spp., *Mycotorula japonica* and *Torula utilis*. It also has a fungistatic effect on filamentous fungi, including *A. fumigatus*, dermatophytes and phytopathogenic fungi. Its nephrotoxicity in rats is lower than that of the polyene amphotericin B (Mizuno et al., 1977). In *S. cerevisiae* and *C. albicans*, aculeacin A acts selectively

on growing cells via inhibition of the  $\beta(1,3)$ -D-glucan synthesis (Ma et al., 2010). Aculeacins B to G show an antifungal spectrum very similar to that of aculeacin A, with aculeacin D showing the strongest activity against yeasts and aculeacin E against filamentous fungi (Sato et al., 1977). Cryptocandin shows inhibitory activity against some human pathogens like *C. albicans* or *Trichophyton* spp. and some phytopathogenic fungi, so it was considered by some companies as a possible drug to treat fungal infections in skin and nails (Strobel, 2002). Acrophiarin is a pneumocandin variant which combines a hydroxy-glutamate typical of echinocandins in the fifth amino acid position of the cyclic hexapeptide with a straight myristoyl lateral chain (Lan et al., 2020). According to one patent from 1979, this echinocandin seems to be an effective antifungal molecule against several *Candida* spp. (Lan et al., 2020). Sporiofungins are echinocandin-like antifungals that exhibited a potent antifungal activity arresting the growth of *C. albicans* and other *Candida* spp. (Dreyfuss, 1986; Yue et al., 2018). Sporiofungins are like pneumocandins with L-serine instead L-threonine and 3-hydroxy-homotyrosine instead 3,4-dihydroxy-homotyrosine in the second and fourth amino acid positions, respectively (Yue et al., 2018).

#### Cyclic lipopeptides: Cyclic nonapeptides, decapeptides and dodecapeptides

Besides echinocandins, other antifungal cyclic lipopeptides containing rings with more than six amino acids are also naturally occurring (Table 1). Clavariopsins are cyclic nonapeptides that have also been proposed to inhibit the GS. These antibiotics display antifungal activity inhibiting *A. fumigatus*, *A. niger* and *C. albicans* (Kaida et al., 2001). Arborcandins are antifungal compounds with a nucleus containing ten amino acids and two side lipophilic tails. These decapeptides exhibit a potent non-competitive inhibition of the GS activity of *C. albicans* and, they are fungicidal against *C. albicans* and fungistatic against *A. fumigatus* (Ohyama et al., 2000). Finally, aerothricin (FR901469 or RO-09-3655) is a macrocyclic lipopeptidolactone comprising a ring with twelve amino acids and a 3-hydroxypalmitoyl lateral chain. This compound is interesting because has good solubility properties and inhibits the activity GS of *C. albicans* more efficiently than other GS inhibitors, such as aculeacin A, echinocandin B, WF11899 and papulacandin B (Fujie et al., 2000a).

#### Acidic terpenoids

Because the lack of oral bioavailability of echinocandins and the limited effectiveness in infected mice of papulacandins (see below), a search for new NPs allowed the identification of acidic terpenoids (enfumafungin, ascosteroside, arundifungin and ergokonin A) as a novel chemical class of GS inhibitors that could be engineered into new orally active drugs (Fig. 2, Fig. 3B and Table 1) (Onishi et al., 2000). These triterpenes comprise an acidic (polar) moiety that can be a glycoside in both ascosteroside and enfumafungin, a succinate in arundifungin or a sulphate-derivative amino acid in ergokonin A (Vicente et al., 2003). Like echinocandins, acidic terpenoids exhibit antifungal activity against species of *Aspergillus* and *Candida*, but are largely ineffective against *C. neoformans* (Cabello et al., 2001; Onishi et al., 2000; Peláez et al., 2000; Vicente et al., 2001). Although the acidic terpenoids are assumed to inhibit the GS, modified *in vitro* assays using *C. albicans* membranes showed that these NPs are much less effective (1000-fold) inhibiting the GS activity than caspofungin analogue L-733560 (Onishi et al., 2000).

#### Acidic terpenoids: Enfumafungin

The acidic terpenoid enfumafungin is a hemiacetal triterpene glycoside derivative obtained from the fermentation of the endophytic fungus *Hormonema carpetanum* (Fig. 3B and Table 1). The *in vitro* antifungal activity of enfumafungin is comparable to that of caspofungin analogues (Onishi et al., 2000; Peláez et al., 2000). Ibrexafungerp (SCY-078) is a semisynthetic derivative of enfumafungin, that is

currently in phase 3 of clinical development (Fig. 1 and Fig. 3B), and combines the improved safety profile of the echinocandins with the advantages of both oral and intravenous preparations (Apgar et al., 2020; Jiménez-Ortigosa et al., 2017; Kuhnert et al., 2018). Ibrexafungerp and other derivatives of enfumafungin are effective inhibitors of GS, yet these compounds seem to bind to different GS domains than echinocandins. Thus, Fks amino acid changes associated to echinocandin resistance are in some occasions different from those causing decreased sensibility to enfumafungin derivatives. Consequently, ibrexafungerp does not display cross resistance with echinocandins, and remains active against pathogens resistant to echinocandins (Jiménez-Ortigosa et al., 2017; Kuhnert et al., 2018). Ibrexafungerp also displays an outstanding *in vitro* activity against wild type and itraconazole-resistant isolates of *Aspergillus* and wild type species of *Candida* (Arendrup et al., 2020; Hector and Bierer, 2011; Pfaller et al., 2013a, b). In models of murine fungal infections, orally administered ibrexafungerp exhibited a wide range of antifungal activity against distinct species of *Candida* and *Aspergillus*, including *C. krusei* and strains resistant to echinocandins (Apgar et al., 2020).

#### Acidic terpenoids: Other acidic terpenoids

Three additional acidic terpenoids exhibiting antifungal properties have been isolated (Table 1). Ascosteroside is a glycoside of a lanostane type triterpenoid that shows activity against yeasts, such as *S. cerevisiae*, distinct *Candida* spp. and filamentous fungi. Mice infected with *C. albicans* and treated with ascosteroside exhibited a time of survival comparable to that of mice treated with ketoconazole (Gorman et al., 1996). Except for *C. glabrata*, ascosteroside exhibited less *in vitro* activity than enfumafungin against *Candida* spp. and *Aspergillus* spp. (Onishi et al., 2000). The acidic steroid arundifungin induced the same morphological phenotypes that echinocandins in growing hyphae of *A. fumigatus*. As the other acidic terpenoids, arundifungin inhibits the growth of *Candida* spp. and *Aspergillus* spp., although less effectively than enfumafungin (Cabello et al., 2001; Onishi et al., 2000). Highly oxygenated ergosterol derivative ergokonin A showed activity against *Candida* and *Aspergillus* spp., being ineffective against *Cryptococcus*, *Fusarium* and *Saccharomyces* (Vicente et al., 2001). Like ascosteroside and arundifungin, ergokonin A exhibited less antifungal activity than enfumafungin (Onishi et al., 2000). More recently, an improved screening for NPs targeting the cell wall identified a desulfated analogue of ergokonin A as a novel inhibitor of the  $\beta(1,3)$ -D-glucan synthesis, that might be active against *C. albicans* and/or *A. fumigatus* (Roemer et al., 2011).

#### Glycolipids

The papulacandins are glycolipids isolated from fungi that were first described in the 1970s (Traxler et al., 1977). Besides papulacandins, there are other fungal glycolipids exhibiting antifungal activity (Table 1). Except for chaetiocandin, all of them comprise a benzannulated spiroketal scaffold (Fig. 3C). Glycolipids generally show strong *in vitro* activity killing *Candida* spp. and several other yeasts, but they are ineffective against *C. neoformans* and *A. fumigatus* (Cortés et al., 2019). Because of their limited efficacy in animal models, no glycolipids have been approved as antifungal drugs (Vicente et al., 2003).

#### Glycolipids: Papulacandins

Like the echinocandin class, papulacandins inhibit the synthesis of the wall  $\beta(1,3)$ -D-glucan by selectively affecting the GS enzyme (Fig. 2 and Table 1). Compared to other related glycolipids, papulacandin B exerts the most powerful inhibitory effect on the *in vitro* GS activity of *C. albicans* (Gunawardana et al., 1997). These glycolipids are very efficient and specific against several yeasts, but exhibit less effectiveness against filamentous fungi (Baguley et al., 1979; Font de Mora et al.,

1990; Pérez et al., 1983; Traxler et al., 1977; Varona et al., 1983). A comparative *in vitro* analysis showed that papulacandins are several orders of magnitude more effective than echinocandins and enfumafungin (see below) inhibiting the GS activity (Martins et al., 2011). Several papulacandin D derivatives have been synthesized by the modification of two partly unsaturated acyl chains linked to sugars (van der Kaaden et al., 2012). Also, an improved screening for the search of new NPs targeting the cell wall identified a new papulacandin analogue that could be effective against *C. albicans* and/or *A. fumigatus* (Roemer et al., 2011). Resistant mutants to papulacandin B have been identified in *S. cerevisiae* and *S. pombe* (Berzaghi et al., 2019; Castro et al., 1995; Martins et al., 2011; Ribas et al., 1991).

#### Glycolipids: Other natural glycolipids

Several other papulacandin-related natural antifungals have been reported (Table 1). Chaetiaccandin is a natural glycolipid that was discovered through the search for inhibitors of fungal cell wall biosynthesis. Chaetiaccandin has a high specific activity against yeasts, especially those mutants of *C. albicans* susceptible to polyoxins. On the other side, fungicidal activity of chaetiaccandin against wild type *C. albicans* is like that of papulacandin B (Komori et al., 1985). Corynecandin contains an additional ester chain at position C3 and displays the same antifungal activity than other related glycolipids. However, it showed less effectiveness than papulacandin B inhibiting *in vitro* GS (Gunawardana et al., 1997). Other glycolipids are fusacandin A and B. Whereas the glycosidic part of fusacandin A is esterified with two chains of unsaturated fatty acids, fusacandin B is esterified exclusively with one fatty acid chain. Fusacandin A exhibited much more antifungal activity than fusacandin B. Fusacandin A activity was like that of papulacandin B against different species of *Candida*, *S. cerevisiae* and *A. niger*. Also, the effectiveness of fusacandin A inhibiting *in vitro* GS activity was like that of the echinocandin cilofungin, but less than that of papulacandin B (Jackson et al., 1995). As other papulacandin-related glycolipids, Mer-WF301, BU-4794F and L-687,781 exhibit fungicidal activity against growing cells of *C. albicans*, but being inactive against *A. fumigatus* and *C. neoformans* (Aoki et al., 1993; Kaneto et al., 1993; VanMiddlesworth et al., 1991). Interestingly, doses of L-687,781 that exhibit low *in vivo* activity against *C. albicans*, were efficient against *P. carinii* (VanMiddlesworth et al., 1991).

#### Existing natural chitin synthase inhibitors

As  $\beta(1,3)$ -D-glucan, chitin is also essential for fungal cell wall integrity and absent in fungal hosts, therefore its synthesis seems an excellent target to develop new antifungal drugs (Fig. 2). NPs polyoxins and nikkomycins are inhibitors of the CS activity that were historically considered as promising molecules to progress into antifungal drug development. Sadly, none of these compounds had clinical development because of their reduced efficiency in infection models. This limited efficacy *in vivo* seems to be due to their weak bioavailability and the differential inhibition against the multiple families of CS isoenzymes found in fungi (Aimanianda and Latge, 2010; Debono and Gordee, 1994; Roncero et al., 2016).

Polyoxins and nikkomycins are peptidyl nucleoside antibiotics (Fig. 3D) which are naturally produced by bacteria of the genus *Streptomyces*. Because of their structural similarity with UDP-GlcNAc, these compounds are highly efficient inhibiting the CS activity by binding to the catalytic site of the Chs enzymes (Cabib, 1991). Polyoxin B exhibits the same activity than fluconazole against the pathogenic fungi *A. fumigatus*, *C. albicans* and *C. neoformans* (Liu et al., 2020). Polyoxins-related nikkomycin Z displays an extraordinary fungicidal activity against *Blastomyces dermatitidis*, *Coccidioides immitis* and *H. capsulatum* when administered orally to mice (Hector and Bierer, 2011), but it is less potent against *A. fumigatus*, and exhibits a fungistatic effect in *C. albicans* growth. Remarkably, caspofungin and nikkomycin Z are strongly synergic

against *A. fumigatus* and *C. albicans* when combined together (Cortés et al., 2019; Fortwendel et al., 2009; Walker et al., 2008).

#### Recent findings on plant-derived antifungals as cell wall inhibitors

Medicinal plants have historically proven their value on its own and as a source of a wide variety of pure molecules with therapeutic potential (Arif et al., 2009). Plant-derived NPs possess a unique and vast chemical diversity that have shown the ability to form optimal interactions with biological macromolecules. Such structural diversity supports the belief that collections of NPs are not only more diverse than those made up of synthetic compounds, but that they better represent the "chemical space" of drug-like molecules (Wolfender and Queiroz, 2012). Over the years, numerous NPs have resulted in a significant number of drugs and drug candidates approved to treat many diseases (Wolfender and Queiroz, 2012). Thus, conventional medicine is increasingly receptive to the use of plant-derived drugs, as traditional antimicrobials become ineffective (Arif et al., 2009).

Here we report a review of extracts, fractions, and isolated compounds from higher plants with the most relevant activities targeting the main structural elements of the fungal cell wall. Table 2 summarizes all plant derivatives, which will be detailed below, with demonstrated activity against the fungal cell wall published in recent years.

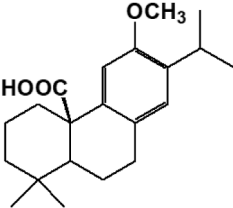
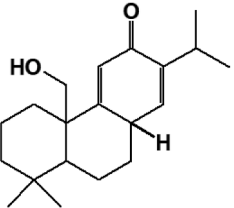
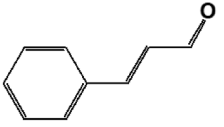
#### Plant-derived extracts and fractions that target the fungal cell wall

*Punica granatum* L. (Lythraceae) is a small, long-living tree cultivated throughout the Mediterranean region, as far north as the Himalayas, in Southeast Asia, and in California and Arizona in the United States. Ethanolic extracts prepared from the pericarp and from the peel of *P. granatum* fruit (Table 2) showed antifungal activity *in vitro* against *Candida* spp. (Anibal et al., 2013). When observed through both scanning electron microscopy (SEM) and TEM, the cells of *C. albicans* and *C. krusei* treated with *P. granatum* extracts appeared deformed and showed defects in cell separation. These defects could be probably due to the presence of both, a thick surrounding cell wall that seemed to be composed by multiple and denser layers, and an abnormal and thick septa between mother and daughter cells (Anibal et al., 2013). These authors suggest that tannins present in the extracts of *P. granatum* could be responsible for cell wall and septum changes in the species of *Candida*.

*Tulbaghia violacea* Harv. (Amaryllidaceae), commonly known as wild garlic, is a small bulbous herb used traditionally in the southern African region. Aqueous extracts from *T. violacea* bulbs (Table 2) showed antifungal activity *in vitro* against *Aspergillus flavus* (Belewa et al., 2011). TEM micrographs of spores exposed to the plant extract showed an induced remodeling of the spore cell wall (Somai and Belewa, 2011). It was also found that the extract caused a dose-dependent decrease of either the  $\beta$ -glucan content (62.5% at 12.5 mg/ml) or the GS activity (44.45% at 12.5 mg/ml) on *A. flavus*. Similarly, a reduction in the total content of chitin (83.34% at 12.5 mg/ml) corresponding to a decrease in CS activity in the presence of the plant extract (72.23% at 12.5 mg/ml) was also found. This inhibitory effect on the production of both  $\beta$ -glucan and chitin synthases results in the weakening of the *A. flavus* cell wall (Belewa et al., 2017). Thus, and unlike caspofungin or nikkomycin, this extract was able to inhibit both CS and GS activities, which are critical for maintaining the integrity of the fungal cell wall. As a consequence, the ability of the fungus to trigger a compensatory response to ensure cell wall integrity by increasing the production of  $\beta(1,3)$ -D-glucan or chitin is completely eliminated, limiting the fungus potential for developing resistance, and therefore making the extract an ideal candidate for its use as a possible antifungal agent (Belewa et al., 2017). Phytochemical analysis of the crude aqueous *T. violacea* extract indicated the presence of a high content of tannins, phenolics and saponins (Belewa et al., 2017).

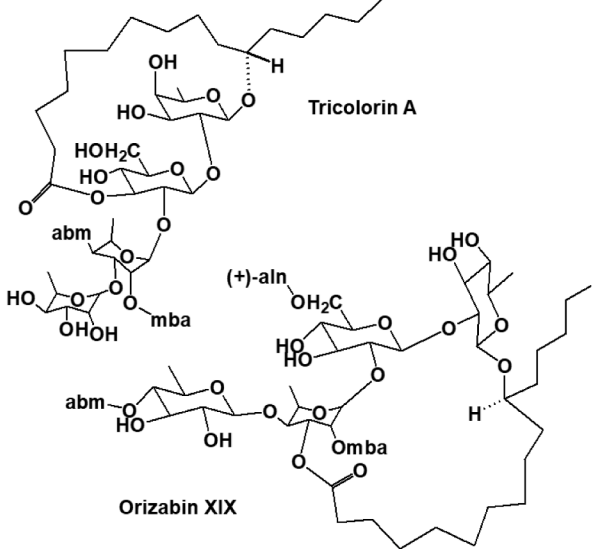
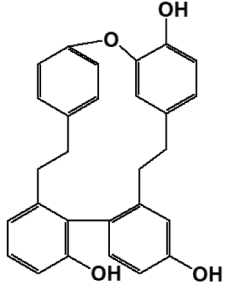
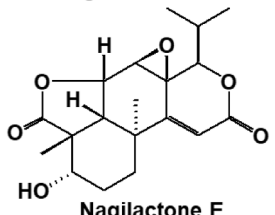
*Aucklandia lappa* DC. (Asteraceae), commonly known as costus or

**Table 2**  
Natural antifungals from plants that target the fungal cell wall

Plant-derived extracts and fractions Plant species	Part used	Extract	Fraction	Effect on fungal cell wall	Reference
<i>Aucklandia lappa</i> DC. (Asteraceae)	Roots	Ethanolic		Decreases chitin content and inhibits GS ( <i>Candida albicans</i> )	(Lee and Kim, 2020)
<i>Camellia sinensis</i> (L.) Kuntze (Theaceae)	Leaves	Methanol:H <sub>2</sub> O (7:3)	Polyphenolic fraction rich in catechins and theaflavins	Release of cellular content, production of shrunken cells ( <i>C. albicans</i> )	(Sitheque et al., 2009)
<i>Phytolacca tetramera</i> Hauman (Phytolaccaceae)	Berries	Dichloromethane		Deformed cells with defects in cell separation ( <i>Schizosaccharomyces pombe</i> , <i>C. albicans</i> )	(Butassi et al., 2019b)
<i>Plinia cauliflora</i> (DC.) Kausel (Myrtaceae)	Leaves	Ethanol:H <sub>2</sub> O (7:3)	Polyphenolic fraction rich in tannins	Denser outer layer of mannoproteins and reduced porosity ( <i>C. albicans</i> )	(Souza-Moreira et al., 2013)
<i>Punica granatum</i> L. (Lythraceae)	Fruit (pericarp and peel)	Ethanolic		Deformed cells with defects in cell separation ( <i>Candida</i> spp.)	(Anibal et al., 2013)
<i>Tulbaghia violacea</i> Harv. (Amaryllidaceae)	Bulbs (rhizomes)	Aqueous		Inhibits GS and CS ( <i>Aspergillus flavus</i> )	(Belewa et al., 2011)
<i>Zuccagnia punctata</i> Cav. (Fabaceae) / <i>Larrea nitida</i> Cav. (Zygophyllaceae)	Aerial parts	Dichloromethane		Deformed cells with defects in cell separation. Inhibits GS and CS ( <i>C. albicans</i> )	(Butassi et al., 2019a)
<b>Plant-derived metabolites</b>					
<b>Plant source</b> <i>Chamaecyparis pisifera</i> (Siebold & Zucc.) Endl. (Cupressaceae)	<b>Part used</b> Leaves	<b>Extract</b> Methanolic	<b>Compound / Chemical structure</b>	<b>Effect on fungal cell wall</b> Inhibit CS ( <i>S. cerevisiae</i> , <i>C. albicans</i> )	<b>Reference</b> (Kang et al., 2008)
			 O-Methyl pisiferic acid	 8,20-Dihydroxy-9(11), 13-abietadien-12-one	
<i>Cinnamomum verum</i> J.Presl (Lauraceae)	Bark	Essential oil	 Trans-cinnamaldehyde	Inhibits GS and CS and disrupt the $\beta(1,3)$ -D-glucan layer ( <i>S. cerevisiae</i> , <i>C. albicans</i> )	(Bang et al., 2000; Deng et al., 2018)

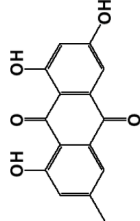
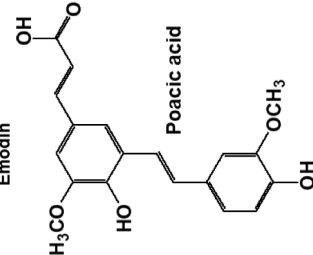
(continued on next page)

Table 2 (continued)

Plant-derived extracts and fractions	Part used	Extract	Fraction	Effect on fungal cell wall	Reference
<i>Ipomoea tricolor</i> Cav. and <i>Ipomoea orizabensis</i> (G. Pelletan) Ledeb. Ex Steud (Convolvulaceae)	Root	Chloroformic	 <p>Tricolorin A</p> <p>Orizabin XIX</p>	Inhibits GS ( <i>S. cerevisiae</i> )	(Castelli et al., 2002)
<i>Marchantia polymorpha</i> L. (Marchantiaceae)	Whole plant	Ethereal	 <p>Plagiochin E</p>	Inhibits CS ( <i>C. albicans</i> )	(Wu et al., 2008)
<i>Podocarpus nagi</i> (Thunb.) Pilg. (Podocarpaceae)	Root bark	Methanolic	 <p>Nagilactone E</p>	Inhibits GS ( <i>C. albicans</i> , <i>Aspergillus fumigatus</i> )	(Hayashi et al., 2018)
<i>Raphanus sativus</i> L. (Brassicaceae)	Seeds	Aqueous basic	RsAFP2 (defensin, 51 amino acids, MW: 5.74 kDa)	Interacts with glucosylceramides producing abnormalities in the cell wall and aberrant budding ( <i>C. albicans</i> )	(Thevissen et al., 2004)

(continued on next page)

Table 2 (continued)

Plant species	Part used	Extract	Fraction	Effect on fungal cell wall	Reference
<i>Rheum palmatum</i> L., <i>Reynoutria japonica</i> Houtt., <i>Reynoutria multiflora</i> (Thumb.) Moldenke (Polygonaceae), <i>Aloe vera</i> (L.) Burm.f. (Xanthorrhoeaceae) and <i>Senna obtusifolia</i> (L.) H. S. Irwin & Barneby (Fabaceae)	Mainly in roots and rhizomes	Methanolic		Inhibits GS ( <i>C. albicans</i> )	(Janeczko, 2018)
Spp. of the Poaceae family	Whole plant	Lignocellulosic hydrolysates (saponification)		It binds directly to the $\beta(1,3)$ -D-glucan fibrils affecting the integrity and mechanical strength of the cell wall ( <i>S. cerevisiae</i> )	(Piotrowski et al., 2015)

CS: chitin synthase; GS:  $\beta(1,3)$ -D-glucan synthase; MW: Molecular Weight

kuth, is a medicinal plant traditionally used in Korea, China, and India for treating digestive disorders (Li et al., 2005). Ethanolic extract from *A. lappa* roots (Table 2) showed antifungal activity against *Candida* spp. Fluorescence microscopy observation of *C. albicans* cells incubated with the extract revealed that cell wall becomes thinner through a reduction in chitin synthesis (Lee and Kim, 2020). In addition, the treatment causes the inhibition of the budding process and cell cycle arrest. Also, an aniline blue assay of membranes obtained from *C. albicans* cells treated with the extract showed an inhibition of the synthesis of  $\beta(1,3)$ -D-glucan. Globally, these results suggested that *A. lappa* ethanolic extract affects cell wall integrity by decreasing chitin content and inhibiting  $\beta(1,3)$ -D-glucan synthase activity in *C. albicans* (Lee and Kim, 2020).

*Phytolacca tetramera* Hauman (Phytolaccaceae) is an endemic plant from Argentina. The dichloromethane extract from berries (Table 2) showed antifungal activity *in vitro* against *C. albicans*, and chemical analysis of this extract allowed the detection of two main monodesmosidic triterpenoid saponins: phytolaccoside B and phytolaccagenin, both with anti-candidal activity (Butassi et al., 2019a). *S. pombe* and *C. albicans* cells treated with *P. tetramera* extract appeared deformed and showed defects in cell separation when were observed through phase contrast and fluorescence microscopies, indicating a cell wall damage. Cellular and enzymatic GS and CS assays showed that this extract does not inhibit the activity of these cell wall enzymes, but it acts by binding to the ergosterol in the plasma membrane, causing a defect in cell wall synthesis and finally the cell death (Butassi et al., 2019a).

*Zuccagnia punctata* Cav. (Fabaceae) is an endemic plant from Argentina (Ulibarri, 2005) while *Larrea nitida* Cav. (Zygophyllaceae) is one of the four South American species of the genus *Larrea* (Timmermann et al., 1979) that grows in Argentina and Chile (Hunziker, 2005). In a previous work, a mixture of dichloromethane extracts from aerial parts of both plants showed synergism against *C. albicans* (Butassi et al., 2015). This mixture (Table 2), composed mainly of chalcones and lignans derived from nordihydroguayaretic acid, was studied according to its mechanism of action. The mixture acts by binding to ergosterol and producing a moderate dose-dependent inhibition of *C. albicans* GS and CS. Phase contrast and fluorescence microscopies revealed malformations in *S. pombe* cells treated with the mixture, suggesting that it acts in a dual way by binding to the membrane ergosterol and altering the fungal cell wall polymers (Butassi et al., 2019b).

*Plinia cauliflora* (DC.) Kausel (Myrtaceae) is a tree widespread in Brazil, Argentina, and Paraguay. A bioguided fractionation of the hydroalcoholic extract (70% ethanol) (Table 2) from *P. cauliflora* leaves against *Candida* spp. allowed to obtain a polyphenolic fraction rich in tannins. A preliminary phytochemical study led to detect casuarinin as the major component of this fraction (Souza-Moreira et al., 2013). The cell wall of *C. albicans* treated with this fraction was studied by TEM and was observed a denser outer layer of mannoproteins and a reduced cell wall porosity. Because tannins are known to complex with macromolecules such as proteins and polysaccharides (Haslam, 1996), the cell wall changes caused by the fraction may be due to the formation of a tannin-mannoproteins complex in the outer layer of *C. albicans* cell wall (Souza-Moreira et al., 2013).

*Camellia sinensis* (L.) Kuntze (Theaceae) (tea plant) is a shrub that comes from Southern China and Southeast Asia, although today it is cultivated around the world, both in tropical and subtropical regions. The polyphenols catechins and theaflavins present in the hydroalcoholic extract (70% methanol) of this plant have shown many medicinal properties including antifungal activity. These tea polyphenols (Table 2) inhibited the growth of *C. albicans in vitro* (Sitheequue et al., 2009). SEM observation of *C. albicans* cells exposed to both catechins and theaflavins showed a release of cellular contents, indicative of death by cell lysis, and the production of shrunken cells. Some yeast cells showed a “mulberry-like” surface that is likely to be a transitional phase between the normal to the collapsed cell wall stage. These results

revealed considerable cell wall damage of *C. albicans* cells exposed to the polyphenols (Sithetheque et al., 2009). These compounds, like tannins, can form complexes with macromolecules (Haslam, 1996), which would explain its action on the cell wall.

#### Plant-derived compounds that target the fungal cell wall

RSAFP2 (Table 2) is an antifungal cysteine-rich peptide (known as defensin) isolated from seeds of *Raphanus sativus* L. (Brassicaceae) (Terras et al., 1992). This compound was active *in vitro* against different isolates of *Candida* spp. (Tavares et al., 2008) and it was also effective *in vivo* in a prophylactic murine model of candidiasis caused by *C. albicans* (Tavares et al., 2008). In *C. albicans*, RSAFP2 interacts primarily with the glucosylceramide, a plasma membrane sphingolipid that has been also proposed to be found in the proteinaceous fraction of the cell wall (Thevisse et al., 2012). RSAFP2 antifungal activity induces cell wall abnormalities and aberrant budding, without the need to be taken up intracellularly. This compound also activates the cell wall integrity pathway, which is one of the MAPK pathways known to be activated under conditions that perturbate either the cell wall or the plasma membrane in *C. albicans* (Thevisse et al., 2012). Since the glucosylceramide is (i) produced by most fungal pathogens (Barreto-Bergter et al., 2004), (ii) required for virulence in *C. albicans* (Noble et al., 2010), and (iii) not structurally related to the human glucosylceramide, the defensin RSAFP2 could exhibit a selective antifungal activity, and thus it could be used as a starting point for the discovery and development of a new family of antifungals drugs (Thevisse et al., 2004).

Poacic acid (Table 2) is a decarboxylated product from 8-5-diferulic acid commonly found in lignocellulosic hydrolysates of Poaceae family. This compound binds directly to  $\beta(1,3)$ -D-glucan fibrils of *S. cerevisiae* cell wall and rapidly produces a disruption of cell wall integrity, leading to cell lysis when the cell turgor pressure bursts the plasma membrane under a weakened cell wall (Piotrowski et al., 2015). It has been proposed that poacic acid specifically binds to the nascent linear chains of  $\beta(1,3)$ -D-glucan, affecting the posterior maturation of the polysaccharide and thus, the integrity and the mechanical strength of the cell wall (Lee et al., 2018). This mode of action is distinct from the one exhibited by echinocandins, acidic terpenoids and papulacandins (see above), which specifically block the synthesis of  $\beta(1,3)$ -D-glucan by inhibiting the activity of the GS. The fact that poacic acid shows a synergistic effect with caspofungin, would confirm that these compounds target the cell wall through different mechanisms. Poacic acid is also synergic with fluconazole (Piotrowski et al., 2015).

The phenolic macrocyclic bis(bibenzyl), plagiochin E (Table 2), isolated from the Chinese liverwort *Marchantia polymorpha* L. (Marchantiaceae) was found to have antifungal activity *in vitro* against *C. albicans* (Niu et al., 2006). TEM observation of *C. albicans* cells treated with this compound showed an extremely damaged cell wall structure, suggesting that the antifungal activity of plagiochin E could be associated with its effect on the cell wall (Wu et al., 2008). Plagiochin E produced a dose-dependent inhibitory effect against *C. albicans* CS (Chs1, Chs2 and Chs3) *in vitro*. The effect of plagiochin E on *in situ* chitin synthesis was also determined during spheroplast regeneration of *C. albicans*, also showing inhibition of chitin synthesis (Wu et al., 2008). Furthermore, plagiochin E also altered the expression of several CS genes in *C. albicans*, where the transcripts of *CHS1* were significantly decreased, while the expression of *CHS2* and *CHS3* was upregulated (Wu et al., 2008).

Emodin (6-methyl-1,3,8-trihydroxyanthraquinone, Table 2) is a natural anthraquinone derivative found mainly in the roots and rhizomes of numerous plants including *Rheum palmatum* L., *Reynoutria japonica* Houtt., *Reynoutria multiflora* (Thunb.) Moldenke (Polygonaceae), *Aloe vera* (L.) Burm.f. (Xanthorrhoeaceae), *Senna obtusifolia* (L.) H. S. Irwin & Barneby (Fabaceae). This compound reduced the *C. albicans* GS activity, leading to the disruption of  $\beta(1,3)$ -D-glucans in the fungal cell wall and increasing cell wall damage (Janeczko, 2018).

Nagilactones are norditerpene dilactones isolated from the root bark of *Podocarpus nagi* (Thunb.) Pilg. (Podocarpaceae), an evergreen tree that grows mainly in western Japan (Hayashi et al., 2018). Among them, nagilactone E (Table 2) has been reported to induce morphological changes in *S. cerevisiae* cells, such as inhomogeneous thickness of the glucan layer and leakage of cytoplasm. These phenotypes were accompanied by a reduction of the *in vitro* GS activity. Furthermore, nagilactone E induced the swelling of *A. fumigatus* hyphae, suggesting that this compound weakens the cell wall of this pathogenic fungus (Hayashi et al., 2018).

The phenyl aldehyde *trans*-cinnamaldehyde (Table 2) is the main component of *Cinnamomum verum* J. Presl (Lauraceae) bark essential oil. *In vitro* studies with this compound showed a noncompetitive and mixed inhibitory effect on *S. cerevisiae* GS and CS, respectively (Bang et al., 2000). Additionally, the effect of this compound was studied *in vivo* using an immunosuppressed mouse model with invasive pulmonary candidiasis. TEM observation indicated that  $\beta(1,3)$ -D-glucans layer of the cell wall of *C. albicans* was rough, deformed, and incomplete, without affecting the cell membrane (Deng et al., 2018).

The compounds with diterpene skeleton *O*-methyl pisiferic acid and 8,20-dihydroxy-9(11),13-abietadien-12-one (Table 2), isolated from the leaves of *Chamaecyparis pisifera* (Siebold & Zucc.) Endl. (Cupressaceae) were evaluated as inhibitors of the three *S. cerevisiae* CS. *O*-methyl pisiferic acid strongly inhibited Chs2 in a dose-dependent manner, whereas 8,20-dihydroxy-9(11),13-abietadien-12-one showed a very weak inhibitory activity. These compounds showed no effects on Chs3 activity, whereas they exhibited very weak inhibitory activities on Chs1. *O*-methyl pisiferic acid also inhibited Chs1 of *C. albicans* (*S. cerevisiae* Chs2 analog), indicating that it is a specific inhibitor of Chs2. Kinetic analysis of inhibition demonstrated that *O*-methyl pisiferic acid acts as a mixed type competitive inhibitor with respect to the substrate UDP-GlcNAc (Kang et al., 2008).

A series of sixteen related glycolipids, tricolorins and orizabins, isolated from the chloroformic root extracts of two members of the Convolvulaceae family, *Ipomoea tricolor* Cav. and *Ipomoea orizabensis* (G. Pelletan) Ledeb. Ex Steud (Bah and Pereda-Miranda, 1997; Hernández-Carlos et al., 1999; Pereda-Miranda and Hernández-Carlos, 2002), were evaluated for their inhibitory activity of *S. cerevisiae* GS (Castelli et al., 2002). Most glycolipids tested were strong *in vitro* inhibitors with  $IC_{50}$  values comparable to that of papulacandin B. The compounds that showed the greatest inhibitory potential on the GS enzymatic activity within each series were tricolorin A and orizabin XIX (Table 2).

#### Conclusions and perspectives

Semisynthetic echinocandins are currently the main treatment against some fungal infections. This review provides an overview about new and old classes of cell wall-targeting fungal and bacterial derived antifungals and their mode of action, offering alternative natural compounds that might be employed as platforms for engineering new derivatives with better physicochemical properties that can be developed into antifungal drugs.

On the other side, the interest of NPs obtained from medicinal plants as a source of a wide variety of secondary metabolites with antifungal properties has increased in the last years (Perumal Samy and Gopalakrishnakone, 2010). The plant extracts, fractions and compounds isolated from them that target the cell wall presented in this review represent a promising alternative for the search for novel antifungal agents. Among the compounds present in the analyzed plants, we mainly find tannins (such as casuarinin, punicalagin and galladydilacton), polyphenols (catechins and theaflavins), phenolics (poacic acid and plagiochin E), flavonoids (chalcones), lignans (nordihydroguayaretic acid), glycolipids (tricolorins and orizabins), anthraquinones (emodin), peptides (defensin), triterpenoid saponins (phytolaccoside B and its genin phytolaccagenin), diterpenes (*O*-methyl pisiferic acid and 8,

20-dihydroxy-9(11),13-abietadien-12-one) and diterpenic lactones (nagilactone E), many of which have reported antifungal activity, being their main target the cell wall (Perumal Samy and Gopalakrishnakone, 2010). Many of these plant-derived antifungals, inhibit enzymes involved in the synthesis of the main cell wall polymers (GS, CS or both), and others bind polysaccharides ( $\beta(1,3)$ -D-glucan or chitin) or other molecules that are part of its architecture (mannoproteins and glucosylceramides), causing a defect in the synthesis.

Globally, these findings encourage the development of new antifungals with different mechanisms of action than those currently in clinical use. As the cell wall is critical for fungal growth and development, and is absent in human cells, these plant-derived antifungals are interesting for future development of selective drugs targeting the fungal cell wall as alternatives with fewer adverse effects.

## Declaration of Competing Interest

M.A.C., E.B., J.C.R. L.A.S. and J.C.G.C. declare that there are no known conflicts of interest associated with this publication and there has been no significant financial support for this work that could have influenced its outcome.

## Acknowledgments

We thank Professor Susana Zacchino for inviting us to submit this review. J.C.G.C., M.A.C. and J.C.R. acknowledge Ministerio de Ciencia e Innovación (MICINN; PGC2018-098924-B-I00) and Junta de Castilla y León/FEDER (CSI150P20 and "Escalera de Excelencia" CLU-2017-03), Spain, for funds. L.A.S. acknowledges Agencia Nacional de Promoción Científica y Tecnológica (ANPCyT) PICT2016-1833 and Universidad Nacional de Rosario (UNR) 1BIO571 for funds. E.B. acknowledges Consejo Nacional de Investigaciones Científicas y Técnicas (CONICET) for a postdoctoral fellowship. L.A.S. is member of the CONICET Researcher career. L.A.S. and E.B. belong to the teaching staff of Pharmacognosy area.

## References

- Adefarati, A.A., Hensens, O.D., Jones, E.T., Tkacz, J.S., 1992. Pneumocandins from *Zalerion arboricola*. V. Glutamic acid- and leucine-derived amino acids in pneumocandin A0 (L-671,329) and distinct origins of the substituted proline residues in pneumocandins A0 and B0. *J Antibiob* 45, 1953–1957. <https://doi.org/10.7164/antibiotics.45.1953>.
- Aimanianda, V., Clavaud, C., Simenel, C., Fontaine, T., Delepiere, M., Latge, J.P., 2009. Cell wall  $\beta(1,6)$ -glucan of *Saccharomyces cerevisiae*: structural characterization and *in situ* synthesis. *J Biol Chem* 284, 13401–13412. <https://doi.org/10.1074/jbc.M807667200>.
- Aimanianda, V., Latge, J.P., 2010. Problems and hopes in the development of drugs targeting the fungal cell wall. *Expert Rev Anti Infect Ther* 8, 359–364. <https://doi.org/10.1586/eri.10.13>.
- Andriole, V.T., 1999. Current and future antifungal therapy: new targets for antifungal agents. *J Antimicrob Chemother* 44, 151–162. <https://doi.org/10.1093/jac/44.2.151>.
- Anibal, P.C., Peixoto, I.T., Foglio, M.A., Hofling, J.F., 2013. Antifungal activity of the ethanolic extracts of *Punica granatum* L. and evaluation of the morphological and structural modifications of its compounds upon the cells of *Candida* spp. *Braz J Microbiol* 44, 839–848. <https://doi.org/10.1590/S1517-83822013005000060>.
- Aoki, M., Andoh, T., Ueki, T., Masuyoshi, S., Sugawara, K., Oki, T., 1993. BU-4794F, a new  $\beta(1,3)$ -glucan synthase inhibitor. *J Antibiob* 46, 952–960. <https://doi.org/10.7164/antibiotics.46.952>.
- Apgar, J.M., Wilkening, R.R., Parker, D.L., Jr., Meng, D., Wildonger, K.J., Sperbeck, D., Greenlee, M.L., Balkovec, J.M., Flattery, A.M., Abruzzo, G.K., Galgoc, A.M., Giacobbe, R.A., Gill, C.J., Hsu, M.J., Liberator, P., Misura, A.S., Motyl, M., Kahn, Nielsen, J., Powles, M., Racine, F., Dragovic, J., Fan, W., Kirwan, R., Lee, S., Liu, H., Mamai, A., Nelson, K., Peel, M., 2020. Ibrexafungerp: an orally active  $\beta(1,3)$ -glucan synthase inhibitor. *Bioorg Med Chem Lett*, 127661. <https://doi.org/10.1016/j.bmcl.2020.127661>.
- Arellano, M., Durán, A., Pérez, P., 1996. Rho1 GTPase activates the (1-3) $\beta$ -D-glucan synthase and is involved in *Schizosaccharomyces pombe* morphogenesis. *EMBO J* 15, 4584–4591. <https://doi.org/10.1002/j.1460-2075.1996.tb00836.x>.
- Arendrup, M.C., Jorgensen, K.M., Hare, R.K., Chowdhary, A., 2020. *In vitro* activity of Ibrexafungerp (SCY-078) against *Candida auris* isolates as determined by EUCAST methodology and comparison with activity against *C. albicans* and *C. glabrata* and with the activities of six comparator agents. *Antimicrob Agents Chemother* 64. <https://doi.org/10.1128/AAC.02136-19>.
- Arif, T., Bhosale, J.D., Kumar, N., Mandal, T.K., Bendre, R.S., Lavekar, G.S., Dabur, R., 2009. Natural products-antifungal agents derived from plants. *J Asian Nat Prod Res* 11, 621–638. <https://doi.org/10.1080/10286020902942350>.
- Augustiniak, H., Forche, E., Reichenbach, H., Wray, V., Gräfe, U., Höfle, G., 1991. Isolierung und strukturaufklärung von ergokonin A und B; zwei neue antifungische sterol-antibiotika aus *Trichoderma koningii*. *Liebigs Ann Chem* 361–366. <https://doi.org/10.1002/jlac.199119910163>.
- Baguley, B.C., Rommele, G., Gruner, J., Wehrli, W., 1979. Papulacandin B: an inhibitor of glucan synthesis in yeast spheroplasts. *Eur J Biochem* 97, 345–351. <https://doi.org/10.1111/j.1432-1033.1979.tb13120.x>.
- Bah, M., Pereda-Miranda, R., 1997. Isolation and structural characterization of new glycolipid ester type dimers from the resin of *Ipomoea tricolor* (Convolvulaceae). *Tetrahedron* 53, 9007–9022. [https://doi.org/10.1016/S0040-4020\(97\)00607-8](https://doi.org/10.1016/S0040-4020(97)00607-8).
- Balkovec, J.M., Hughes, D.L., Masurekar, P.S., Sable, C.A., Schwartz, R.E., Singh, S.B., 2014. Discovery and development of first in class antifungal caspofungin (CANCIDAS<sup>®</sup>)—a case study. *Nat Prod Rep* 31, 15–34. <https://doi.org/10.1039/c3np70070d>.
- Bang, K.H., Lee, D.W., Park, H.M., Rhee, Y.H., 2000. Inhibition of fungal cell wall synthesizing enzymes by trans-cinnamaldehyde. *Biosci Biotechnol Biochem* 64, 1061–1063. <https://doi.org/10.1271/bbb.64.1061>.
- Barreto-Berger, E., Pinto, M.R., Rodrigues, M.L., 2004. Structure and biological functions of fungal cerebrosides. *An Acad Bras Cienc* 76, 67–84. <https://doi.org/10.1590/s0001-37652004000100007>.
- Beauvais, A., Bozza, S., Kniemeyer, O., Formosa, C., Balloy, V., Henry, C., Roberson, R. W., Dague, E., Chignard, M., Brakhage, A.A., Romani, L., Latge, J.P., 2013. Deletion of the  $\alpha(1,3)$ -glucan synthase genes induces a restructuring of the conidial cell wall responsible for the avirulence of *Aspergillus fumigatus*. *PLoS Pathog* 9, e1003716. <https://doi.org/10.1371/journal.ppat.1003716>.
- Belewa, V., Baijnath, H., Frost, C., Somai, B.M., 2017. *Tulbaghia violacea* Harv. plant extract affects cell wall synthesis in *Aspergillus flavus*. *J Appl Microbiol* 122, 921–931. <https://doi.org/10.1111/jam.13405>.
- Belewa, V., Baijnath, H., Somai, B.M., 2011. Aqueous extracts from the bulbs of *Tulbaghia violacea* are antifungal against *Aspergillus flavus*. *J Food Saf* 31, 176–184. <https://doi.org/10.1111/j.1745-4565.2010.00282.x>.
- Benz, F., Knüsel, F., Nüesch, J., Treichler, H., Voser, W., Nyfeler, R., Keller-Schierlein, W., 1974. Stoffwechselprodukte von mikroorganismen 143. Mitteilung. Echinocandin B, ein neuartiges polypeptid-antibiotikum aus *Aspergillus nidulans* var. echinulatus: isolierung und bausteine. *Helv Chim Acta* 57, 2459–2477. <https://doi.org/10.1002/hlca.19740570818>.
- Berzagli, R., Agocs, A., Curto, M.A., Gulyas-Fekete, G., Kocsis, B., Ribas, J.C., Lorand, T., 2019. Novel cell wall antifungals reveal a special synergistic activity in *pbr1* mutants resistant to the glucan synthesis antifungals papulacandins and echinocandins. *Front Microbiol* 10, 1692. <https://doi.org/10.3389/fmicb.2019.01692>.
- Bills, G.F., Platas, G., Peláez, F., Masurekar, P., 1999. Reclassification of a pneumocandin-producing anamorph, *Glarea lozoyensis* gen. et sp. nov., previously identified as *Zalerion arboricola*. *Mycol Res* 103, 179–192. <https://doi.org/10.1017/S095375629800687X>.
- Bills, G.F., Yue, Q., Chen, L., Li, Y., An, Z., Frisvad, J.C., 2016. *Aspergillus mundensis* sp. nov., a new species for the fungus producing the antifungal echinocandin lipopeptides, mundocandins. *J Antibiob* 69, 141–148. <https://doi.org/10.1038/ja.2015.105>.
- Bowman, S.M., Free, S.J., 2006. The structure and synthesis of the fungal cell wall. *Bioessays* 28, 799–808. <https://doi.org/10.1002/bies.20441>.
- Bruneau, J.M., Maillet, I., Tagat, E., Legrand, R., Supatto, F., Fudali, C., Caer, J.P., Labas, V., Lecaque, D., Hodgson, J., 2003. Drug induced proteome changes in *Candida albicans*: comparison of the effect of  $\beta(1,3)$  glucan synthase inhibitors and two triazoles, fluconazole and itraconazole. *Proteomics* 3, 325–336. <https://doi.org/10.1002/pmic.200390046>.
- Butassi, E., Svetaz, L.A., Ivancovich, J.J., Feresin, G.E., Tapia, A., Zacchino, S.A., 2015. Synergistic mutual potentiation of antifungal activity of *Zuccagnia punctata* Cav. and *Larrea nitida* Cav. extracts in clinical isolates of *Candida albicans* and *Candida glabrata*. *Phytomedicine* 22, 666–678. <https://doi.org/10.1016/j.phymed.2015.04.004>.
- Butassi, E., Svetaz, L.A., Sortino, M.A., Quiroga, A.D., Carvalho, V.S.D., Cortés, J.C.G., Ribas, J.C., Zacchino, S.A., 2019a. Approaches to the mechanism of antifungal activity of *Zuccagnia punctata*-*Larrea nitida* bi-herbal combination. *Phytomedicine* 54, 291–301. <https://doi.org/10.1016/j.phymed.2018.06.045>.
- Butassi, E., Svetaz, L.A., Zhou, S., Wolfender, J.L., Cortés, J.C.G., Ribas, J.C., Diaz, C., Palacio, J.P., Vicente, F., Zacchino, S.A., 2019b. The antifungal activity and mechanisms of action of quantified extracts from berries, leaves and roots of *Phytolacca tetramera*. *Phytomedicine* 60, 152884. <https://doi.org/10.1016/j.phymed.2019.152884>.
- Cabello, M.A., Platas, G., Collado, J., Díez, M.T., Martín, I., Vicente, F., Meinz, M., Onishi, J.C., Douglas, C., Thompson, J., Kurtz, M.B., Schwartz, R.E., Bills, G.F., Giacobbe, R.A., Abruzzo, G.K., Flattery, A.M., Kong, L., Peláez, F., 2001. Arundifungin, a novel antifungal compound produced by fungi: biological activity and taxonomy of the producing organisms. *Int Microbiol* 4, 93–102. <https://doi.org/10.1007/s101230100020>.
- Cabib, E., 1991. Differential inhibition of chitin synthetases 1 and 2 from *Saccharomyces cerevisiae* by polyoxin D and nikkomycins. *Antimicrob Agents Chemother* 35, 170–173. <https://doi.org/10.1128/aac.35.1.170>.
- Cabib, E., Arroyo, J., 2013. How carbohydrates sculpt cells: chemical control of morphogenesis in the yeast cell wall. *Nat Rev Microbiol* 11, 648–655. <https://doi.org/10.1038/nrmicro3090>.

- Cabib, E., Roh, D.H., Schmidt, M., Crotti, L.B., Varma, A., 2001. The yeast cell wall and septum as paradigms of cell growth and morphogenesis. *J Biol Chem* 276, 19679–19682. <https://doi.org/10.1074/jbc.R000031200>.
- Cao, C., Wang, Y., Husain, S., Soteropoulos, P., Xue, C., 2019. A mechanosensitive channel governs lipid flippase-mediated echinocandin resistance in *Cryptococcus neoformans*. *mBio* 10. <https://doi.org/10.1128/mBio.01952-19>.
- Cassone, A., Mason, R.E., Kerridge, D., 1981. Lysis of growing yeast-form cells of *Candida albicans* by echinocandin: a cytological study. *Sabouraudia* 19, 97–110. <https://doi.org/10.1080/00362178185380161>.
- Castelli, M.V., Cortés, J.C.G., Escalante, A.M., Bah, M., Pereda-Miranda, R., Ribas, J.C., Zucchini, S.A., 2002. *In vitro* inhibition of 1,3- $\beta$ -glucan synthase by glycolipids from Convulvulaceae species. *Planta Med* 68, 739–742. <https://doi.org/10.1055/s-2002-33791>.
- Castro, C., Ribas, J.C., Valdívieso, M.H., Varona, R., del Rey, F., Durán, A., 1995. Papulacandin B resistance in budding and fission yeasts: isolation and characterization of a gene involved in (1,3) $\beta$ -D-glucan synthesis in *Saccharomyces cerevisiae*. *J Bacteriol* 177, 5732–5739. <https://doi.org/10.1128/jb.177.20.5732-5739.1995>.
- Cortés, J.C.G., Curto, M.A., Carvalho, V.S.D., Pérez, P., Ribas, J.C., 2019. The fungal cell wall as a target for the development of new antifungal therapies. *Biotechnol Adv* 37, 107352. <https://doi.org/10.1016/j.biotechadv.2019.02.008>.
- Cortés, J.C.G., Sato, M., Muñoz, J., Moreno, M.B., Clemente-Ramos, J.A., Ramos, M., Okada, H., Osumi, M., Durán, A., Ribas, J.C., 2012. Fission yeast *Agsl1* confers the essential septum strength needed for safe gradual cell abscission. *J Cell Biol* 198, 637–656. <https://doi.org/10.1083/jcb.201202015>.
- Crous, P.W., Groenewald, J.Z., 2016. They seldom occur alone. *Fungal Biol* 120, 1392–1415. <https://doi.org/10.1016/j.funbio.2016.05.009>.
- Chen, S.C., Slavin, M.A., Sorrell, T.C., 2011. Echinocandin antifungal drugs in fungal infections: a comparison. *Drugs* 71, 11–41. <https://doi.org/10.2165/11585270-000000000-00000>.
- Debono, M., Gorde, R.S., 1994. Antibiotics that inhibit fungal cell wall development. *Annu Rev Microbiol* 48, 471–497. <https://doi.org/10.1146/annurev.mi.48.100194.002351>.
- Debono, M., Turner, W.W., LaGrandeur, L., Burkhardt, F.J., Nissen, J.S., Nichols, K.K., Rodriguez, M.J., Zweifel, M.J., Zeckner, D.J., Gorde, R.S., et al., 1995. Semisynthetic chemical modification of the antifungal lipopeptide echinocandin B (ECB): structure-activity studies of the lipophilic and geometric parameters of polyarylated acyl analogs of ECB. *J Med Chem* 38, 3271–3281. <https://doi.org/10.1021/jm00017a012>.
- Deng, J.H., Wang, G.S., Li, J.H., Wang, X.L., 2018. Effect of cinnamaldehyde on 1, 3- $\beta$ -D-glucans in cell wall of *Candida albicans* in immunosuppressed BALB/c mice. *Chin Herb Med* 10, 445–450. <https://doi.org/10.1016/j.chmed.2018.08.002>.
- Denning, D.W., 2003. Echinocandin antifungal drugs. *Lancet* 362, 1142–1151. [https://doi.org/10.1016/S0140-6736\(03\)14472-8](https://doi.org/10.1016/S0140-6736(03)14472-8).
- Dijkgraaf, G.J., Abe, M., Ohya, Y., Bussey, H., 2002. Mutations in *Fks1p* affect the cell wall content of  $\beta$ -1,3- and  $\beta$ -1,6-glucan in *Saccharomyces cerevisiae*. *Yeast* 19, 671–690. <https://doi.org/10.1002/yea.866>.
- Douglas, C.M., 2001. Fungal  $\beta$ (1,3)-D-glucan synthesis. *Med Mycol* 39, 55–66. <https://doi.org/10.1080/mmy.39.1.55.66>.
- Douglas, C.M., Marrinan, J.A., Li, W., Kurtz, M.B., 1994. A *Saccharomyces cerevisiae* mutant with echinocandin-resistant 1,3- $\beta$ -D-glucan synthase. *J Bacteriol* 176, 5686–5696. <https://doi.org/10.1128/jb.176.18.5686-5696.1994>.
- Dreyfuss, M.M., 1986. Neue Erkenntnisse aus einem pharmakologischen pilz-screening. *Sydowia* 39, 22–36.
- Drgonova, J., Drgon, T., Tanaka, K., Kollar, R., Chen, G.C., Ford, R.A., Chan, C.S., Takai, Y., Cabib, E., 1996. Rho1p, a yeast protein at the interface between cell polarization and morphogenesis. *Science* 272, 277–279. <https://doi.org/10.1126/science.272.5259.277>.
- Du, B., Meenu, M., Liu, H., Xu, B., 2019. A concise review on the molecular structure and functional relationship of  $\beta$ -glucan. *Int J Mol Sci* 20. <https://doi.org/10.3390/ijms20164032>.
- Ecker, M., Deutzmann, R., Lehle, L., Mrsa, V., Tanner, W., 2006. Pir proteins of *Saccharomyces cerevisiae* are attached to  $\beta$ -1,3-glucan by a new protein-carbohydrate linkage. *J Biol Chem* 281, 11523–11529. <https://doi.org/10.1074/jbc.M600314200>.
- Edwards, J.A., Alore, E.A., Rappleye, C.A., 2011. The yeast-phase virulence requirement for  $\alpha$ -glucan synthase differs among *Histoplasma capsulatum* chemotypes. *Eukaryot Cell* 10, 87–97. <https://doi.org/10.1128/EC.00214-10>.
- Emri, T., Majoros, L., Toth, V., Pocsí, I., 2013. Echinocandins: production and applications. *Appl Microbiol Biotechnol* 97, 3267–3284. <https://doi.org/10.1007/s00253-013-4761-9>.
- Font de Mora, J., Valentín, E., Herrero, E., Sentandreu, R., 1990. Glycoprotein molecules in the walls of *Schizosaccharomyces pombe* wild-type cells and a morphologically altered mutant resistant to papulacandin B. *J Gen Microbiol* 136, 2251–2259. <https://doi.org/10.1099/00221287-136-11-2251>.
- Fortwendel, J.R., Juvvadi, P.R., Pinchai, N., Perfect, B.Z., Alspaugh, J.A., Perfect, J.R., Steinbach, W.J., 2009. Differential effects of inhibiting chitin and 1,3- $\beta$ -D-glucan synthesis in ras and calcineurin mutants of *Aspergillus fumigatus*. *Antimicrob Agents Chemother* 53, 476–482. <https://doi.org/10.1128/AAC.01154-08>.
- Fujie, A., Iwamoto, T., Muramatsu, H., Okudaira, T., Nitta, K., Nakanishi, T., Sakamoto, K., Hori, Y., Hino, M., Hashimoto, S., Okuhara, M., 2000a. FR901469, a novel antifungal antibiotic from an unidentified fungus No.11243. I. Taxonomy, fermentation, isolation, physico-chemical properties and biological properties. *J Antibiot* 53, 912–919. <https://doi.org/10.7164/antibiotics.53.912>.
- Fujie, A., Iwamoto, T., Muramatsu, H., Okudaira, T., Sato, I., Furuta, T., Tsurumi, Y., Hori, Y., Hino, M., Hashimoto, S., Okuhara, M., 2000b. FR901469, a novel antifungal antibiotic from an unidentified fungus No.11243. II. In vitro and in vivo activities. *J Antibiot* 53, 920–927. <https://doi.org/10.7164/antibiotics.53.920>.
- Furuta, T., Muramatsu, H., Fujie, A., Fujihira, S., Abudullah, N.R., Kojima, S., 1998. Therapeutic effects of water-soluble echinocandin compounds on *Pneumocystis pneumonia* in mice. *Antimicrob Agents Chemother* 42, 37–39. <https://doi.org/10.1128/AAC.42.1.37>.
- García Cortés, J.C., Ramos, M., Osumi, M., Pérez, P., Ribas, J.C., 2016. The cell biology of fission yeast septation. *Microbiol Mol Biol Rev* 80, 779–791. <https://doi.org/10.1128/MMBR.00013-16>.
- Gastebois, A., Clavaud, C., Aimañanda, V., Latge, J.P., 2009. *Aspergillus fumigatus*: cell wall polysaccharides, their biosynthesis and organization. *Future Microbiol* 4, 583–595. <https://doi.org/10.2217/fmb.09.29>.
- Georgopapadakou, N.H., Walsh, T.J., 1994. Human mycoses: drugs and targets for emerging pathogens. *Science* 264, 371. <https://doi.org/10.1126/science.8153622>.
- Gilbert, N.M., Donlin, M.J., Gerik, K.J., Specht, C.A., Djordjevic, J.T., Wilson, C.F., Sorrell, T.C., Lodge, J.K., 2010. *KRE* genes are required for  $\beta$ -1,6-glucan synthesis, maintenance of capsule architecture and cell wall protein anchoring in *Cryptococcus neoformans*. *Mol Microbiol* 76, 517–534. <https://doi.org/10.1111/j.1365-2958.2010.07119.x>.
- Gorman, J.A., Chang, L.P., Clark, J., Gustavson, D.R., Lam, K.S., Mamber, S.W., Pirnik, D., Ricca, C., Fernandes, P.B., O'Sullivan, J., 1996. Ascosteroside, a new antifungal agent from *Ascotricha amphitricha*. I. Taxonomy, fermentation and biological activities. *J Antibiot* 49, 547–552. <https://doi.org/10.7164/antibiotics.49.547>.
- Gow, N.A.R., Latge, J.P., Munro, C.A., 2017. The fungal cell wall: structure, biosynthesis, and function. *Microbiol Spectr* 5. <https://doi.org/10.1128/microbiolspec.FUNK-0035-2016>.
- Grafe, U., Ihn, W., Schlegel, B., Hofle, G., Augustiniak, H., Sandor, P., 1991. Structure of ergokinin C, a new carboxysterol antifungal antibiotic from a *Tolyposcladium inflatum* mutant. *Pharmazie* 46, 613–614.
- Grun, C.H., Hochstenbach, F., Humbel, B.M., Verkleij, A.J., Sietsma, J.H., Klis, F.M., Kamerling, J.P., Vliegthart, J.F., 2005. The structure of cell wall  $\alpha$ -glucan from a fission yeast. *Glycobiology* 15, 245–257. <https://doi.org/10.1093/glycob/cwi002>.
- Gunawardana, G., Rasmussen, R.R., Scherr, M., Frost, D., Brandt, K.D., Choi, W., Jackson, M., Karwowski, J.P., Sunga, G., Malmberg, L.H., West, P., Chen, R.H., Kadam, S., Clement, J.J., McAlpine, J.B., 1997. Corynecandin: a novel antifungal glycolipid from *Coryneum modonium*. *J Antibiot* 50, 884–886. <https://doi.org/10.7164/antibiotics.50.884>.
- Hamari, Z., Kevei, F., Kovacs, E., Varga, J., Kozakiewicz, Z., Croft, J.H., 1997. Molecular and phenotypic characterization of *Aspergillus japonicus* and *Aspergillus aculeatus* strains with special regard to their mitochondrial DNA polymorphisms. *Antonie Van Leeuwenhoek* 72, 337–347. <https://doi.org/10.1023/a:1000578913759>.
- Haslam, E., 1996. Natural polyphenols (vegetable tannins) as drugs: possible modes of action. *J Nat Prod* 59, 205–215. <https://doi.org/10.1021/np960040+>.
- Hawser, S.P., Jessup, C., Vitullo, J., Ghannoum, M.A., 2001. Utility of 2,3-bis(2-methoxy-4-nitro-5-sulphophenyl)-5-[(phenyl-amino)carbonyl]-2H-tetrazolium hydroxide (XTT) and minimum effective concentration assays in the determination of antifungal susceptibility of *Aspergillus fumigatus* to the lipopeptide class compounds. *J Clin Microbiol* 39, 2738–2741. <https://doi.org/10.1128/JCM.39.7.2738-2741.2001>.
- Hayashi, K., Yamaguchi, Y., Ogita, A., Tanaka, T., Kubo, I., Fujita, K.I., 2018. Effect of nagilactone E on cell morphology and glucan biosynthesis in budding yeast *Saccharomyces cerevisiae*. *Fitoterapia* 128, 112–117. <https://doi.org/10.1016/j.fitote.2018.05.003>.
- Hector, R.F., Bieer, D.E., 2011. New  $\beta$ -glucan inhibitors as antifungal drugs. *Expert Opin Ther Pat* 21, 1597–1610. <https://doi.org/10.1517/13543776.2011.603899>.
- Henry, C., Latge, J.P., Beauvais, A., 2011.  $\alpha$ 1,3-glucans are dispensable in *Aspergillus fumigatus*. *Eukaryot Cell* 11, 26–29. <https://doi.org/10.1128/EC.05270-11>.
- Hernández-Carlos, B., Bye, R., Pereda-Miranda, R., 1999. Orizabins V-VIII, tetrasaccharide glycolipids from the Mexican scammony root (*Ipomoea orizabensis*). *J Nat Prod* 62, 1096–1100. <https://doi.org/10.1021/np9900627>.
- Herrero, A.B., Magnelli, P., Mansour, M.K., Levitz, S.M., Bussey, H., Abeijon, C., 2004. *KRE5* gene null mutant strains of *Candida albicans* are avirulent and have altered cell wall composition and hypha formation properties. *Eukaryot Cell* 3, 1423–1432. <https://doi.org/10.1128/EC.3.6.1423-1432.2004>.
- Hino, M., Fujie, A., Iwamoto, T., Hori, Y., Hashimoto, M., Tsurumi, Y., Sakamoto, K., Takase, S., Hashimoto, S., 2001. Chemical diversity in lipopeptide antifungal antibiotics. *J Ind Microbiol Biotechnol* 27, 157–162. <https://doi.org/10.1038/sj.jim.7000091>.
- Hochstenbach, F., Klis, F.M., van den Ende, H., van Donselaar, E., Peters, P.J., Klausner, R.D., 1998. Identification of a putative  $\alpha$ -glucan synthase essential for cell wall construction and morphogenesis in fission yeast. *Proc Natl Acad Sci USA* 95, 9161–9166. <https://doi.org/10.1073/pnas.95.16.9161>.
- Hodges, R.L., Hodges, D.W., Goggans, K., Xuei, X., Skatrud, P., McGilvray, D., 1994. Genetic modification of an echinocandin B-producing strain of *Aspergillus nidulans* to produce mutants blocked in sterigmatocystin biosynthesis. *J Ind Microbiol* 13, 372–381. <https://doi.org/10.1007/BF01577222>.
- Hu, Z.C., Li, W.J., Zou, S.P., Niu, K., Zheng, Y.G., 2020. Mutagenesis of echinocandin B overproducing *Aspergillus nidulans* capable of using starch as main carbon source. *Prep Biochem Biotechnol* 50, 745–752. <https://doi.org/10.1080/10826068.2020.1734940>.
- Hunziker, J.H., 2005. *Zygothylaceae*. *Flora Fanerogámica Argentina*, 95. Instituto de Botánica Darwinion, Buenos Aires, pp. 1–20.
- Hutchins, K., Bussey, H., 1983. Cell wall receptor for yeast killer toxin: involvement of (1->6)- $\beta$ -D-glucan. *J Bacteriol* 154, 161–169. <https://doi.org/10.1128/JB.154.1.161-169.1983>.

- Huttel, W., 2017. Structural diversity in echinocandin biosynthesis: the impact of oxidation steps and approaches toward an evolutionary explanation. *Z Naturforsch C J Biosci* 72, 1–20. <https://doi.org/10.1515/znc-2016-0156>.
- Huttel, W., 2020. Echinocandins: structural diversity, biosynthesis, and development of antimycotics. *Appl Microbiol Biotechnol*. <https://doi.org/10.1007/s00253-020-11022-y>.
- Huttel, W., Youssar, L., Gruning, B.A., Gunther, S., Hugentobler, K.G., 2016. Echinocandin B biosynthesis: a biosynthetic cluster from *Aspergillus nidulans* NRRL 8112 and reassembly of the subclusters Ecd and Hty from *Aspergillus pachyristatus* NRRL 11440 reveals a single coherent gene cluster. *BMC Genomics* 17, 570. <https://doi.org/10.1186/s12864-016-2885-x>.
- Iwamoto, T., Fujie, A., Nitta, K., Hashimoto, S., Okuhara, M., Kohsaka, M., 1994. WF11899A, B and C, novel antifungal lipopeptides. II. Biological properties. *J Antibiot* 47, 1092–1097. <https://doi.org/10.7164/antibiotics.47.1092>.
- Jackson, M., Frost, D.J., Karwowski, J.P., Humphrey, P.E., Dahod, S.K., Choi, W.S., Brandt, K., Malmberg, L.H., Rasmussen, R.R., Scherr, M.H., et al., 1995. Fusacandins A and B; novel antifungal antibiotics of the papulacandin class from *Fusarium sambucinum*. I. Identity of the producing organism, fermentation and biological activity. *J Antibiot* 48, 608–613. <https://doi.org/10.7164/antibiotics.48.608>.
- Janecko, M., 2018. Emodin reduces the activity of (1,3)- $\beta$ -D-glucan synthase from *Candida albicans* and does not interact with caspofungin. *Pol J Microbiol* 67, 463–470. <https://doi.org/10.21307/pjm-2018-054>.
- Jiménez-Ortigosa, C., Pérez, W.B., Angulo, D., Borroto-Esoda, K., Perlin, D.S., 2017. De novo acquisition of resistance to SCY-078 in *Candida glabrata* involves FKS mutations that both overlap and are distinct from those conferring echinocandin resistance. *Antimicrob Agents Chemother* 61. <https://doi.org/10.1128/AAC.00833-17>.
- Kaida, K., Fudou, R., Kameyama, T., Tubaki, K., Suzuki, Y., Ojika, M., Sakagami, Y., 2001. New cyclic depsipeptide antibiotics, clavariopsins A and B, produced by an aquatic hyphomycetes, *Clavariopsis aquatica*. I. Taxonomy, fermentation, isolation, and biological properties. *J Antibiot* 54, 17–21. <https://doi.org/10.7164/antibiotics.54.17>.
- Kaneto, R., Chiba, H., Agematu, H., Shibamoto, N., Yoshioka, T., Nishida, H., Okamoto, R., 1993. Mer-WF3010, a new member of the papulacandin family. I. Fermentation, isolation and characterization. *J Antibiot* 46, 247–250. <https://doi.org/10.7164/antibiotics.46.247>.
- Kang, M.S., Cabib, E., 1986. Regulation of fungal cell wall growth: a guanine nucleotide-binding proteinaceous component required for activity of (1,3)- $\beta$ -D-glucan synthase. *Proc Natl Acad Sci USA* 83, 5808–5812. <https://doi.org/10.1073/pnas.83.16.5808>.
- Kang, M.S., Szaniszlo, P.J., Notario, V., Cabib, E., 1986. The effect of papulacandin B on (1-3)- $\beta$ -D-glucan synthetases. A possible relationship between inhibition and enzyme conformation. *Carbohydr Res* 149, 13–21. [https://doi.org/10.1016/S0008-6215\(00\)90365-3](https://doi.org/10.1016/S0008-6215(00)90365-3).
- Kang, T.H., Hwang, E.I., Yun, B.S., Shin, C.S., Kim, S.U., 2008. Chitin synthase 2 inhibitory activity of O-methyl piferic acid and 8,20-dihydroxy-9(11),13-abieta-dien-12-one, isolated from *Chamaecyparis pisifera*. *Biol Pharm Bull* 31, 755–759. <https://doi.org/10.1248/bpb.31.755>.
- Kapteyn, J.C., Ram, A.F., Groos, E.M., Kollar, R., Montijn, R.C., Van Den Ende, H., Llobell, A., Cabib, E., Klis, F.M., 1997. Altered extent of cross-linking of  $\beta$ 1,6-glycosylated mannoproteins to chitin in *Saccharomyces cerevisiae* mutants with reduced cell wall  $\beta$ 1,3-glucan content. *J Bacteriol* 179, 6279–6284. <https://doi.org/10.1128/jb.179.20.6279-6284.1997>.
- Katayama, S., Hirata, D., Arellano, M., Pérez, P., Toda, T., 1999. Fission yeast  $\alpha$ -glucan synthase Msk1 requires the actin cytoskeleton to localize the sites of growth and plays an essential role in cell morphogenesis downstream of protein kinase C function. *J Cell Biol* 144, 1173–1186. <https://doi.org/10.1083/jcb.144.6.1173>.
- Keller-Juslén, C., Kuhn, M., Loosli, H.R., Petcher, T.J., Weber, H.P., von Wartburg, A., 1976. Struktur des cyclopeptid-antibiotikums 17810 (= echinocandin). *Tetrahedron Lett* 17, 4147–4150. [https://doi.org/10.1016/S0040-4039\(00\)74618-1](https://doi.org/10.1016/S0040-4039(00)74618-1).
- Klis, F.M., Caro, L.H., Vossen, J.H., Kapteyn, J.C., Ram, A.F., Montijn, R.C., Van Berkel, M.A., Van den Ende, H., 1997. Identification and characterization of a major building block in the cell wall of *Saccharomyces cerevisiae*. *Biochem Soc Trans* 25, 856–860. <https://doi.org/10.1042/bst0250856>.
- Klis, F.M., Mol, P., Hellingwerf, K., Brul, S., 2002. Dynamics of cell wall structure in *Saccharomyces cerevisiae*. *FEMS Microbiol Rev* 26, 239–256. <https://doi.org/10.1111/j.1574-6976.2002.tb00613.x>.
- Kollar, R., Petrakova, E., Ashwell, G., Robbins, P.W., Cabib, E., 1995. Architecture of the yeast cell wall. The linkage between chitin and  $\beta$ (1-3)-glucan. *J Biol Chem* 270, 1170–1178. <https://doi.org/10.1074/jbc.270.3.1170>.
- Kollar, R., Reinhold, B.B., Petráková, E., Yeh, H.J., Ashwell, G., Drgonová, J., Kapteyn, J.C., Klis, F.M., Cabib, E., 1997. Architecture of the yeast cell wall.  $\beta$ (1-6)-glucan interconnects mannoprotein,  $\beta$ (1-3)-glucan, and chitin. *J Biol Chem* 272, 17762–17775. <https://doi.org/10.1074/jbc.272.28.17762>.
- Komori, T., Yamashita, M., Tsurumi, Y., Kohsaka, M., 1985. Chaetiacandin, a novel papulacandin. I. Fermentation, isolation and characterization. *J Antibiot* 38, 455–459. <https://doi.org/10.7164/antibiotics.38.455>.
- Kuhnert, E., Li, Y., Lan, N., Yue, Q., Chen, L., Cox, R.J., An, Z., Yokoyama, K., Bills, G.F., 2018. Enfumafungin synthase represents a novel lineage of fungal triterpene cyclases. *Environ Microbiol* 20, 3325–3342. <https://doi.org/10.1111/1462-2920.14333>.
- Kumeda, Y., Asao, T., Iida, A., Wada, S., Futami, S., Fujita, T., 1994. Effects of Ergokinin A produced by *Trichoderma viride* on the growth and morphological development of fungi. *J Antibiot Antifung Agents* 22, 663–670.
- Kurtz, M.B., Douglas, C.M., 1997. Lipopeptide inhibitors of fungal glucan synthase. *J Med Vet Mycol* 35, 79–86. <https://doi.org/10.1080/02681219780000961>.
- Lan, N., Perlati, B., Kvitik, D.J., Wiemann, P., Harvey, C.J.B., Frisvad, J., An, Z., Bills, G.F., 2020. Acrophiarin (antibiotic S31794/F-1) from *Penicillium arenicola* shares biosynthetic features with both *Aspergillus*- and *Leotiomyces*-type echinocandins. *Environ Microbiol* 22, 2292–2311. <https://doi.org/10.1111/1462-2920.15004>.
- Latge, J.P., 2007. The cell wall: a carbohydrate armour for the fungal cell. *Mol Microbiol* 66, 279–290. <https://doi.org/10.1111/j.1365-2958.2007.05872.x>.
- Lee, H.S., Kim, Y., 2020. *Aucklandia lappa* causes cell wall damage in *Candida albicans* by reducing chitin and (1,3)- $\beta$ -D-glucan. *J Microbiol Biotechnol* 30, 967–973. <https://doi.org/10.4014/jmb.2002.02025>.
- Lee, K.K., Kubo, K., Abdelaziz, J.A., Cunningham, I., de Silva Dantas, A., Chen, X., Okada, H., Ohya, Y., Gow, N.A.R., 2018. Yeast species-specific, differential inhibition of  $\beta$ -1,3-glucan synthesis by poaic acid and caspofungin. *Cell Surf* 3, 12–25. <https://doi.org/10.1016/j.tcsu.2018.09.001>.
- Lenardon, M.D., Munro, C.A., Gow, N.A., 2010. Chitin synthesis and fungal pathogenesis. *Curr Opin Microbiol* 13, 416–423. <https://doi.org/10.1016/j.mib.2010.05.002>.
- Lesage, G., Bussey, H., 2006. Cell wall assembly in *Saccharomyces cerevisiae*. *Microbiol Mol Biol Rev* 70, 317–343. <https://doi.org/10.1128/MMBR.00038-05>.
- Li, A., Sun, A., Liu, R., 2005. Preparative isolation and purification of costunolide and dehydrocostalactone from *Aucklandia lappa* Decne by high-speed counter-current chromatography. *J Chromatogr A* 1076, 193–197. <https://doi.org/10.1016/j.chroma.2005.04.042>.
- Lipke, P.N., Ovalle, R., 1998. Cell wall architecture in yeast: new structure and new challenges. *J Bacteriol* 180, 3735–3740. <https://doi.org/10.1128/JB.180.15.3735-3740.1998>.
- Liu, W., Yuan, L., Wang, S., 2020. Recent progress in the discovery of antifungal agents targeting the cell wall. *J Med Chem* 63, 12429–12459. <https://doi.org/10.1021/acs.jmedchem.0c00748>.
- Ma, C.M., Abe, T., Komiya, T., Wang, W., Hattori, M., Daneshmand, M., 2010. Synthesis, anti-fungal and 1,3- $\beta$ -D-glucan synthase inhibitory activities of caffeic and quinic acid derivatives. *Bioorg Med Chem* 18, 7009–7014. <https://doi.org/10.1016/j.bmc.2010.08.022>.
- Mann, P.A., McLellan, C.A., Koseoglu, S., Si, Q., Kuzmin, E., Flattery, A., Harris, G., Sher, X., Murgolo, N., Wang, H., Devito, K., de Pedro, N., Genilloud, O., Kahn, J.N., Jiang, B., Costanzo, M., Boone, C., Garlisi, C.G., Lindquist, S., Roemer, T., 2015. Chemical genomics-based antifungal drug discovery: targeting glycosylphosphatidylinositol (GPI) precursor biosynthesis. *ACS Infect Dis* 1, 59–72. <https://doi.org/10.1021/id5000212>.
- Manners, D.J., Masson, A.J., Patterson, J.C., Bjorndal, H., Lindberg, B., 1973. The structure of a  $\beta$ (1-6)-D-glucan from yeast cell walls. *Biochem J* 135, 31–36. <https://doi.org/10.1042/bj1350031>.
- Martins, I.M., Cortés, J.C.G., Muñoz, J., Moreno, M.B., Ramos, M., Clemente-Ramos, J.A., Durán, A., Ribas, J.C., 2011. Differential activities of three families of specific  $\beta$ (1,3) glucan synthase inhibitors in wild-type and resistant strains of fission yeast. *J Biol Chem* 286, 3484–3496. <https://doi.org/10.1074/jbc.M110.174300>.
- Min, T., Xiong, L., Liang, Y., Xu, R., Fa, C., Yang, S., Hu, H., 2019. Disruption of stcA blocks sterigmatocystin biosynthesis and improves echinocandin B production in *Aspergillus delacroixii*. *World J Microbiol Biotechnol* 35, 109. <https://doi.org/10.1007/s11274-019-2687-9>.
- Mizuno, K., Yagi, A., Sato, S., Takada, M., Hayashi, M., 1977. Studies on aculeacin. I. Isolation and characterization of aculeacin A. *J Antibiot* 30, 297–302. <https://doi.org/10.7164/antibiotics.30.297>.
- Morris, S.A., Schwartz, R.E., Sesin, D.F., Masurekar, P., Hallada, T.C., Schmatz, D.M., Bartizal, K., Hensens, O.D., Zink, D.L., 1994. Pneumocandin D0, a new antifungal agent and potent inhibitor of *Pneumocystis carinii*. *J Antibiot* 47, 755–764. <https://doi.org/10.7164/antibiotics.47.755>.
- Mrsa, V., Seidl, T., Gentzsch, M., Tanner, W., 1997. Specific labelling of cell wall proteins by biotinylation. Identification of four covalently linked O-mannosylated proteins of *Saccharomyces cerevisiae*. *Yeast* 13, 1145–1154. [https://doi.org/10.1002/\(SICI\)1097-0061\(19970930\)13:12<1145::AID-YEA163>3.0.CO;2-Y](https://doi.org/10.1002/(SICI)1097-0061(19970930)13:12<1145::AID-YEA163>3.0.CO;2-Y).
- Mrsa, V., Tanner, W., 1999. Role of NaOH-extractable cell wall proteins Ccw5p, Ccw6p, Ccw7p and Ccw8p (members of the Pir protein family) in stability of the *Saccharomyces cerevisiae* cell wall. *Yeast* 15, 813–820. [https://doi.org/10.1002/\(SICI\)1097-0061\(199907\)15:10A<813::AID-YEA421>3.0.CO;2-Y](https://doi.org/10.1002/(SICI)1097-0061(199907)15:10A<813::AID-YEA421>3.0.CO;2-Y).
- Mukhopadhyay, T., Roy, K., Bhat, R.G., Sawant, S.N., Blumbach, J., Ganguli, B.N., Fehlhaber, H.W., Kogler, H., 1992. Deoxyxylundocandin - a new echinocandin type antifungal antibiotic. *J Antibiot* 45, 618–623. <https://doi.org/10.7164/antibiotics.45.618>.
- Mutz, M., Roemer, T., 2016. The GPI anchor pathway: a promising antifungal target? *Future Med Chem* 8, 1387–1391. <https://doi.org/10.4155/fmc-2016-0110>.
- Niu, C., Qu, J.B., Lou, H.X., 2006. Antifungal bis[bibenzyls] from the Chinese liverwort *Marchantia polymorpha* L. *Chem Biodivers* 3, 34–40. <https://doi.org/10.1002/cbdv.200690004>.
- Niu, K., Wu, X.P., Hu, X.L., Zou, S.P., Hu, Z.C., Liu, Z.Q., Zheng, Y.G., 2020. Effects of methyl oleate and microparticle-enhanced cultivation on echinocandin B fermentation titer. *Bioprocess Biosyst Eng* 43, 2009–2015. <https://doi.org/10.1007/s00449-020-02389-3>.
- Noble, H.M., Langley, D., Sidebottom, P.J., Lane, S.J., Fisher, P.J., 1991. An echinocandin from an endophytic *Cryptosporopsis* sp. and *Pezizula* sp. in *Pinus sylvestris* and *Fagus sylvatica*. *Mycol Res* 95, 1439–1440. [https://doi.org/10.1016/S0953-7562\(09\)80401-2](https://doi.org/10.1016/S0953-7562(09)80401-2).
- Noble, S.M., French, S., Kohn, L.A., Chen, V., Johnson, A.D., 2010. Systematic screens of a *Candida albicans* homozygous deletion library decouple morphogenetic switching and pathogenicity. *Nat Genet* 42, 590–598. <https://doi.org/10.1038/ng.605>.
- Odds, F.C., Brown, A.J., Gow, N.A., 2003. Antifungal agents: mechanisms of action. *Trends Microbiol* 11, 272–279. [https://doi.org/10.1016/s0966-842x\(03\)00117-3](https://doi.org/10.1016/s0966-842x(03)00117-3).

- Ohyama, T., Kurihara, Y., Ono, Y., Ishikawa, T., Miyakoshi, S., Hamano, K., Arai, M., Suzuki, T., Igari, H., Suzuki, Y., Inukai, M., 2000. Arborcandins A, B, C, D, E and F, novel 1,3- $\beta$ -glucan synthase inhibitors: production and biological activity. *J Antibiot* 53, 1108–1116. <https://doi.org/10.7164/antibiotics.53.1108>.
- Onishi, J., Meinz, M., Thompson, J., Curotto, J., Dreikorn, S., Rosenbach, M., Douglas, C., Abruzzo, G., Flattery, A., Kong, L., Cabello, A., Vicente, F., Peláez, F., Díez, M.T., Martín, I., Bills, G., Giacobbe, R., Dombrowski, A., Schwartz, R., Morris, S., Harris, G., Tsiouras, A., Wilson, K., Kurtz, M.B., 2000. Discovery of novel antifungal (1,3)- $\beta$ -D-glucan synthase inhibitors. *Antimicrob Agents Chemother* 44, 368–377. <https://doi.org/10.1128/aac.44.2.368-377.2000>.
- Orlean, P., 2012. Architecture and biosynthesis of the *Saccharomyces cerevisiae* cell wall. *Genetics* 192, 775–818. <https://doi.org/10.1534/genetics.112.144485>.
- Paderu, P., Park, S., Perlin, D.S., 2004. Caspofungin uptake is mediated by a high-affinity transporter in *Candida albicans*. *Antimicrob Agents Chemother* 48, 3845–3849. <https://doi.org/10.1128/AAC.48.10.3845-3849.2004>.
- Page, N., Gerard-Vincent, M., Menard, P., Beaulieu, M., Azuma, M., Dijkgraaf, G.J., Li, H., Marcoux, J., Nguyen, T., Dowse, T., Sdicu, A.M., Bussey, H., 2003. A *Saccharomyces cerevisiae* genome-wide mutant screen for altered sensitivity to K1 killer toxin. *Genetics* 163, 875–894.
- Patil, A., Majumdar, S., 2017. Echinocandins in antifungal pharmacotherapy. *J Pharm Pharmacol* 69, 1635–1660. <https://doi.org/10.1111/jphp.12780>.
- Peláez, F., Cabello, A., Platas, G., Díez, M.T., Gonzalez del Val, A., Basilio, A., Martán, I., Vicente, F., Bills, G.E., Giacobbe, R.A., Schwartz, R.E., Onish, J.C., Meinz, M.S., Abruzzo, G.K., Flattery, A.M., Kong, L., Kurtz, M.B., 2000. The discovery of enfumafungin, a novel antifungal compound produced by an endophytic *Hormonema* species biological activity and taxonomy of the producing organisms. *Syst Appl Microbiol* 23, 333–343. [https://doi.org/10.1016/s0723-2020\(00\)80062-4](https://doi.org/10.1016/s0723-2020(00)80062-4).
- Pereda-Miranda, R., Hernández-Carlos, B., 2002. HPLC Isolation and structural elucidation of diastereomeric niloyl ester tetrasaccharides from Mexican scammony root. *Tetrahedron* 58, 3145–3154. [https://doi.org/10.1016/S0040-4020\(02\)00284-3](https://doi.org/10.1016/S0040-4020(02)00284-3).
- Pérez, P., Cortés, J.C., Martín-García, R., Ribas, J.C., 2016. Overview of fission yeast septation. *Cell Microbiol* 18, 1201–1207. <https://doi.org/10.1111/cmi.12611>.
- Pérez, P., García-Acha, I., Durán, A., 1983. Effect of papulacandin B on the cell wall and growth of *Geotrichum lactis*. *J Gen Microbiol* 129, 245–250. <https://doi.org/10.1099/00221287-129-1-245>.
- Pérez, P., Varona, R., García-Acha, I., Durán, A., 1981. Effect of papulacandin B and aculeacin A on  $\beta$ -(1,3)glucan-synthase from *Geotrichum lactis*. *FEBS Lett* 129, 249–252. <https://doi.org/10.1099/00221287-129-1-245>.
- Perfect, J.R., 2017. The antifungal pipeline: a reality check. *Nat Rev Drug Discov* 16, 603–616. <https://doi.org/10.1038/nrd.2017.46>.
- Perlin, D.S., 2019. Cell Wall-Modifying Antifungal Drugs. In: Latgé, J.P. (Ed.), *The fungal cell wall: an armour and a weapon for human fungal pathogens*. Springer, Cham, pp. 255–275. <https://doi.org/10.1007/978-2-019-188>. *Curr Topics Microbiol Immun.*
- Pfalter, M., Riley, J., Koerner, T., 1989. Effects of cilofungin (LY121019) on carbohydrate and sterol composition of *Candida albicans*. *Eur. J. Clin. Microbiol. Infect. Dis.* 8, 1067–1070. <https://doi.org/10.1007/BF01975172>.
- Perumal Samy, R., Gopalakrishnakone, P., 2010. Therapeutic potential of plants as antimicrobials for drug discovery. *Evid Based Complement Alternat Med* 7, 283–294. <https://doi.org/10.1093/ecam/nen036>.
- Pfalter, M.A., Messer, S.A., Motyl, M.R., Jones, R.N., Castanheira, M., 2013a. Activity of MK-3118, a new oral glucan synthase inhibitor, tested against *Candida* spp. by two international methods (CLSI and EUCAST). *J Antimicrob Chemother* 68, 858–863. <https://doi.org/10.1093/jac/dks466>.
- Pfalter, M.A., Messer, S.A., Motyl, M.R., Jones, R.N., Castanheira, M., 2013b. In vitro activity of a new oral glucan synthase inhibitor (MK-3118) tested against *Aspergillus* spp. by CLSI and EUCAST broth microdilution methods. *Antimicrob Agents Chemother* 57, 1065–1068. <https://doi.org/10.1128/AAC.01588-12>.
- Piotrowski, J.S., Okada, H., Lu, F., Li, S.C., Hinchman, L., Ranjan, A., Smith, D.L., Higbee, A.J., Ulbrich, A., Coon, J.J., Deshpande, R., Bukhman, Y.V., McIlwain, S., Ong, I.M., Myers, C.L., Boone, C., Landick, R., Ralph, J., Kabbage, M., Ohya, Y., 2015. Plant-derived antifungal agent poaic acid targets  $\beta$ -1,3-glucan. *Proc Natl Acad Sci USA* 112, E1490–E1497. <https://doi.org/10.1073/pnas.1410400112>.
- Reese, A.J., Yoneda, A., Breger, J.A., Beauvais, A., Liu, H., Griffith, C.L., Bose, I., Kim, M. J., Skau, C., Yang, S., Sefko, J.A., Osumi, M., Latge, J.P., Mylonakis, E., Doering, T.L., 2007. Loss of cell wall  $\alpha$ (1-3) glucan affects *Cryptococcus neoformans* from ultrastructure to virulence. *Mol Microbiol* 63, 1385–1398. <https://doi.org/10.1111/j.1365-2958.2006.05551.x>.
- Ribas, J.C., Durán, Á., Cortés, J.C.G., 2014. New cell wall-affecting antifungal antibiotics. In: Villa, T.G., Veiga-Crespo, P. (Eds.), *Antimicrob Comp*. Springer, Berlin Heidelberg, pp. 237–268. [https://doi.org/10.1007/978-3-642-40444-3\\_9](https://doi.org/10.1007/978-3-642-40444-3_9).
- Ribas, J.C., Roncero, C., Rico, H., Durán, A., 1991. Characterization of a *Schizosaccharomyces pombe* morphological mutant altered in the galactomannan content. *FEMS Microbiol. Lett.* 79, 263–268. [https://doi.org/10.1016/0378-1097\(91\)90096-s](https://doi.org/10.1016/0378-1097(91)90096-s).
- Roemer, T., Xu, D., Singh, S.B., Parish, C.A., Harris, G., Wang, H., Davies, J.E., Bills, G.F., 2011. Confronting the challenges of natural product-based antifungal discovery. *Chem Biol* 18, 148–164. <https://doi.org/10.1016/j.chembiol.2011.01.009>.
- Roncero, C., Sánchez-Díaz, A., Valdivieso, M.H., 2016. Chitin synthesis and fungal cell morphogenesis. In: Hoffmeister, D. (Ed.), *Biochemistry and Molecular Biology*. Springer International Publishing, Cham, pp. 167–190. [https://doi.org/10.1007/978-3-319-27790-5\\_9](https://doi.org/10.1007/978-3-319-27790-5_9).
- Roy, K., Mukhopadhyay, T., Reddy, G.C., Desikan, K.R., Ganguli, B.N., 1987. Mulundocandin, a new lipopeptide antibiotic. I. Taxonomy, fermentation, isolation and characterization. *J Antibiot* 40, 275–280. <https://doi.org/10.7164/antibiotics.40.275>.
- Ruiz-Herrera, J., Elorza, M.V., Valentín, E., Sentandreu, R., 2006. Molecular organization of the cell wall of *Candida albicans* and its relation to pathogenicity. *FEMS Yeast Res* 6, 14–29. <https://doi.org/10.1111/j.1567-1364.2005.00017.x>.
- Sable, C.A., Strohmaier, K.M., Chodakewitz, J.A., 2008. Advances in antifungal therapy. *Annu Rev Med* 59, 361–379. <https://doi.org/10.1146/annurev.med.59.062906.071602>.
- Satoi, S., Yagi, A., Asano, K., Mizuno, K., Watanabe, T., 1977. Studies on aculeacin. II. Isolation and characterization of aculeacins B, C, D, E, F and G. *J Antibiot* 30, 303–307. <https://doi.org/10.7164/antibiotics.30.303>.
- Schwartz, R.E., Giacobbe, R.A., Bland, J.A., Monaghan, R.L., 1989. L-671,329, a new antifungal agent. I. Fermentation and isolation. *J Antibiot* 42, 163–167. <https://doi.org/10.7164/antibiotics.42.163>.
- Schwartz, R.E., Sesin, D.F., Joshua, H., Wilson, K.E., Kempf, A.J., Goklen, K.A., Kuehner, D., Gailliot, P., Gleason, C., White, R., et al., 1992. Pneumocandins from *Zalerion arboricola*. I. Discovery and isolation. *J Antibiot* 45, 1853–1866. <https://doi.org/10.7164/antibiotics.45.1853>.
- Shivakumar, M.C., Manohar, S., Ishwar, B., Raghu, P., Savitha, J., 2019. Deacylation of echinocandin B by *Streptomyces* species: a novel method for the production of echinocandin B nucleus. *3 Biotech* 9, 412. <https://doi.org/10.1007/s13205-019-1946-7>.
- Sitheequ, M.A., Panagoda, G.J., Yau, J., Amarakoon, A.M., Udagama, U.R., Samaranyake, L.P., 2009. Antifungal activity of black tea polyphenols (catechins and theaflavins) against *Candida* species. *Chemotherapy* 55, 189–196. <https://doi.org/10.1159/000216836>.
- Somai, B.M., Belewa, V., 2011. Aqueous extracts of *Tubaghia violacea* inhibit germination of *Aspergillus flavus* and *Aspergillus parasiticus* conidia. *J Food Prot* 74, 1007–1011. <https://doi.org/10.4315/0362-028X.JFP-10-434>.
- Souza-Moreira, T.M., Severi, J.A., Lee, K., Preechasuth, K., Santos, E., Gow, N.A., Munro, C.A., Villegas, W., Pietro, R.C., 2013. Anti-*Candida* targets and cytotoxicity of casuarinin isolated from *Plinia cauliflora* leaves in a bioactivity-guided study. *Molecules* 18, 8095–8108. <https://doi.org/10.3390/molecules18078095>.
- Strobel, G.A., 2002. Rainforest endophytes and bioactive products. *Crit Rev Biotechnol* 22, 315–333. <https://doi.org/10.1080/07388550290789531>.
- Strobel, G.A., Miller, R.V., Martinez-Miller, C., Condrom, M.M., Teplow, D.B., Hess, W.M., 1999. Cryptocandin, a potent antimycotic from the endophytic fungus *Cryptosporiopsis cf. quercina*. *Microbiology* 145, 1919–1926. <https://doi.org/10.1099/13500872-145-8-1919>.
- Tavares, P.M., Thevissen, K., Cammue, B.P., Francois, I.E., Barreto-Berger, E., Taborda, C.P., Marques, A.F., Rodrigues, M.L., Nimrichter, L., 2008. *In vitro* activity of the antifungal plant defensin RsAFP2 against *Candida* isolates and its *in vivo* efficacy in prophylactic murine models of candidiasis. *Antimicrob Agents Chemother* 52, 4522–4525. <https://doi.org/10.1128/AAC.00448-08>.
- Terras, F.R., Schoofs, H.M., De Bolle, M.F., Van Leuven, F., Rees, S.B., Vanderleyden, J., Cammue, B.P., Broekaert, W.F., 1992. Analysis of two novel classes of plant antifungal proteins from radish (*Raphanus sativus* L.) seeds. *J Biol Chem* 267, 15301–15309. [https://doi.org/10.1016/S0021-9258\(19\)49534-3](https://doi.org/10.1016/S0021-9258(19)49534-3).
- Thevissen, K., de Mello Tavares, P., Xu, D., Blankenship, J., Vandenbosch, D., Idkowiak-Baldys, J., Govaert, G., Bink, A., Rozental, S., de Groot, P.W., Davis, T.R., Kumamoto, C.A., Vargas, G., Nimrichter, L., Coenye, T., Mitchell, A., Roemer, T., Hannun, Y.A., Cammue, B.P., 2012. The plant defensin RsAFP2 induces cell wall stress, septin mislocalization and accumulation of ceramides in *Candida albicans*. *Mol Microbiol* 84, 166–180. <https://doi.org/10.1111/j.1365-2958.2012.08017.x>.
- Thevissen, K., Warnecke, D.C., Francois, I.E., Leipelt, M., Heinz, E., Ott, C., Zahring, U., Thomma, B.P., Perket, K.K., Cammue, B.P., 2004. Defensins from insects and plants interact with fungal glucosylceramides. *J Biol Chem* 279, 3900–3905. <https://doi.org/10.1074/jbc.M311165200>.
- Timmermann, B., Valesi, A., Mabry, T., 1979. Flavonoids from *Larrea nitida*, *L. divaricata* and *L. cuneifolia* (Zygophyllaceae). *Rev Latinoam Quim* 10, 81–83.
- Tomishima, M., Ohki, H., Yamada, A., Takasugi, H., Maki, K., Tawara, S., Tanaka, H., 1999. FK463, a novel water-soluble echinocandin lipopeptide: synthesis and antifungal activity. *J Antibiot* 52, 674–676. <https://doi.org/10.7164/antibiotics.52.674>.
- Traber, R., Keller-Juslén, C., Loosli, H., Kuhn, M., Von Wartburg, A., 1979. Cyclopeptid-Antibiotika aus *Aspergillus*-Arten. Struktur der echinocandine C und D. *Helv Chim Acta* 62, 1252–1267. <https://doi.org/10.1002/hlca.19790620436>.
- Traxler, P., Gruner, J., Auden, J.A., 1977. Papulacandins, a new family of antibiotics with antifungal activity. I. Fermentation, isolation, chemical and biological characterization of papulacandins A, B, C, D and E. *J Antibiot* 30, 289–296. <https://doi.org/10.7164/antibiotics.30.289>.
- Ulibarri, E.A., 2005. *Zuccagnia punctata* (Leguminosae) ¿nuevo o viejo endemismo argentino? *Darwiniana* 212–215.
- van der Kaaden, M., Breukink, E., Pieters, R.J., 2012. Synthesis and antifungal properties of papulacandin derivatives. *Beilstein J Org Chem* 8, 732–737. <https://doi.org/10.3762/bjoc.8.82>.
- VanMiddlesworth, F., Omstead, M.N., Schmatz, D., Bartizal, K., Fromtling, R., Bills, G., Nollstadt, K., Honeycutt, S., Zweerink, M., Garrity, G., et al., 1991. L-687,781, a new member of the papulacandin family of  $\beta$ -1,3-D-glucan synthesis inhibitors. I. Fermentation, isolation, and biological activity. *J Antibiot* 44, 45–51. <https://doi.org/10.7164/antibiotics.44.45>.
- Varona, R., Pérez, P., Durán, A., 1983. Effect of papulacandin B on  $\beta$ -glucan synthesis in *Schizosaccharomyces pombe*. *FEMS Microbiol. Lett.* 20, 243–247. <https://doi.org/10.1111/j.1574-6968.1983.tb00125.x>.
- Vicente, M.F., Basilio, A., Cabello, A., Peláez, F., 2003. Microbial natural products as a source of antifungals. *Clinic Microbiol Infect* 9, 15–32. <https://doi.org/10.1046/j.1469-0691.2003.00489.x>.

- Vicente, M.F., Cabello, A., Platas, G., Basilio, A., Díez, M.T., Dreikorn, S., Giacobbe, R.A., Onishi, J.C., Meinz, M., Kurtz, M.B., Rosenbach, M., Thompson, J., Abruzzo, G., Flattery, A., Kong, L., Tsiouras, A., Wilson, K.E., Peláez, F., 2001. Antimicrobial activity of ergokonin A from *Trichoderma longibrachiatum*. *J Appl Microbiol* 91, 806–813. <https://doi.org/10.1046/j.1365-2672.2001.01447.x>.
- Vos, A., Dekker, N., Distel, B., Leunissen, J.A., Hochstenbach, F., 2007. Role of the synthase domain of Ags1p in cell wall  $\alpha$ -glucan biosynthesis in fission yeast. *J Biol Chem* 282, 18969–18979. <https://doi.org/10.1074/jbc.M605147200>.
- Walker, L.A., Munro, C.A., de Bruijn, I., Lenardon, M.D., McKinnon, A., Gow, N.A., 2008. Stimulation of chitin synthesis rescues *Candida albicans* from echinocandins. *PLoS Pathog* 4, e1000040. <https://doi.org/10.1371/journal.ppat.1000040>.
- Wang, X., Lin, M., Xu, D., Lai, D., Zhou, L., 2017. Structural diversity and biological activities of fungal cyclic peptides, excluding cyclodipeptides. *Molecules* 22. <https://doi.org/10.3390/molecules22122069>.
- Wolfender, J.L., Queiroz, E.F., 2012. New approaches for studying the chemical diversity of natural resources and the bioactivity of their constituents. *Chimia* 66, 324–329. <https://doi.org/10.2533/chimia.2012.324>.
- Wu, X.Z., Cheng, A.X., Sun, L.M., Lou, H.X., 2008. Effect of plagiocin E, an antifungal macrocyclic bis(benzyl), on cell wall chitin synthesis in *Candida albicans*. *Acta Pharmacol Sin* 29, 1478–1485. <https://doi.org/10.1111/j.1745-7254.2008.00900.x>.
- Yamaguchi, H., Hiratani, T., Baba, M., Osumi, M., 1985. Effect of aculeacin A, a wall-active antibiotic, on synthesis of the yeast cell wall. *Microbiol Immunol* 29, 609–623. <https://doi.org/10.1111/j.1348-0421.1985.tb00865.x>.
- Yang, S.X., Wang, H.P., Gao, J.M., Zhang, Q., Laatsch, H., Kuang, Y., 2012. Fusaroside, a unique glycolipid from *Fusarium* sp., an endophytic fungus isolated from *Melia azedarach*. *Org Biomol Chem* 10, 819–824. <https://doi.org/10.1039/c1ob06426f>.
- Ye, L., Zhang, J., Xiao, W., Liu, S., 2020. Efficacy and mechanism of actions of natural antimicrobial drugs. *Pharmacol Ther* 107671. <https://doi.org/10.1016/j.pharmthera.2020.107671>.
- Yue, Q., Chen, L., Zhang, X., Li, K., Sun, J., Liu, X., An, Z., Bills, G.F., 2015. Evolution of chemical diversity in echinocandin lipopeptide antifungal metabolites. *Eukaryot Cell* 14, 698–718. <https://doi.org/10.1128/EC.00076-15>.
- Yue, Q., Li, Y., Chen, L., Zhang, X., Liu, X., An, Z., Bills, G.F., 2018. Genomics-driven discovery of a novel self-resistance mechanism in the echinocandin-producing fungus *Pezizula radicola*. *Environ Microbiol* 20, 3154–3167. <https://doi.org/10.1111/1462-2920.14089>.
- Zhu, B., Dong, Y., Ma, J., Chen, M., Ruan, S., Zhao, W., Feng, J., 2020. The synthesis and activity evaluation of N-acylated analogs of echinocandin B with improved solubility and lower toxicity. *J Pept Sci* 26, e3278. <https://doi.org/10.1002/psc.3278>.