



Annexin A2 and S100A10 in the mammalian oviduct

Journal:	<i>Cell and Tissue Research</i>
Manuscript ID:	CTR-15-0232.R3
Manuscript Type:	Regular Article
Date Submitted by the Author:	n/a
Complete List of Authors:	Teijeiro, Juan; Facultad de Ciencias Bioquímicas y Farmacéuticas, Universidad Nacional de Rosario, Laboratorio de Medicina Reproductiva Roldán, María; Facultad de Ciencias Bioquímicas y Farmacéuticas, Universidad Nacional de Rosario, Laboratorio de Medicina Reproductiva Marini, Patricia; Facultad de Ciencias Bioquímicas y Farmacéuticas, Universidad Nacional de Rosario, Laboratorio de Medicina Reproductiva; Instituto de Biología Molecular y Celular de Rosario, IBR-CONICET,
Keywords:	Fallopian tube, sperm reservoir, annexin, oviduct, S100A10

SCHOLARONE™
Manuscripts

view

Annexin A2 and S100A10 in the mammalian oviduct

Juan Manuel Teijeiro^{1,2}, María Lorena Roldán¹ and Patricia Estela Marini^{1,3,4*}

1 Laboratorio de Medicina Reproductiva, Facultad de Ciencias Bioquímicas y Farmacéuticas,
Universidad Nacional de Rosario, Rosario, Argentina

2 Researcher from Consejo Nacional de Investigaciones Científicas y Técnicas (CONICET), Rosario,
Argentina

3 Instituto de Biología Molecular y Celular de Rosario, Rosario, IBR-CONICET, Argentina

4 Researcher from Consejo de Investigaciones de la Universidad Nacional de Rosario, Rosario,
Argentina

Correspondence to:

Patricia Estela Marini

Laboratorio de Medicina Reproductiva

Facultad de Ciencias Bioquímicas y Farmacéuticas

Suipacha 590 – S2002LRK – Rosario, Argentina

Tel.: 0054 341 4350661 ext. 116

FAX: 0054 341 4804601

marini@ibr.gov.ar – pmarini@fbioyf.unr.edu.ar

Abstract

In many mammals upon entry on the female reproductive tract a subpopulation of sperm is stored in the oviduct forming a functional reservoir. In the oviducts of pig and cow, Annexin A2 (AnxA2) has been linked to the binding of sperm. This protein may exist as a monomer or bound to S100A10, and both forms are associated with different biological functions. S100A10 has not yet been reported in the oviduct. The objective of this work was to analyze for the presence of S100A10 in the oviduct and advance in the study of AnxA2 and S100A10 in this organ. This work shows the presence of both proteins, AnxA2 and S100A10, in the oviduct of human, pig, cow, cat, dog and rabbit. At least in pig, AnxA2 is found devoid of S100A10 in the outer surface of the apical plasma membrane of oviductal epithelial cells, indicating it binds to sperm as a monomer or in association with proteins different from S100A10. In the apical cytoplasm of pig oviductal epithelial cells, AnxA2 is associated to S100A10. In primary culture of porcine oviductal cells, the expression of *ANXA2* is increased by progesterone, while the expression of *S100A10* is increased by progesterone and estradiol. The widespread detection of both proteins in the oviduct of mammals indicates a probable conserved function in this organ. In summary, S100A10 and AnxA2 are widespread in the mammalian oviduct, but AnxA2 would bind sperm *in vivo* devoid of S100A10 and may be related to reservoir formation.

Introduction

The oviduct is a dynamic organ in which sperm selection, fertilization, and the first stages of embryo development take place. This organ is largely responsible for sperm selection. When spermatozoa enter the oviduct in pigs (Hunter, 1984), cattle (Hunter and Wilmut, 1984), sheep (Hunter et al., 1982), mice (Suarez, 1987), hamsters (Smith and Yanagimachi, 1991), horses (Thomas et al., 1994), dogs (Pacey et al., 2000), cats (Chatdarong et al., 2004), rabbits (Baranda-Avila et al., 2010) and humans (Pacey et al., 1995), a subpopulation of them binds to the epithelial cells forming a reservoir. This process is considered to select for high quality, help control polyspermy, lengthen lifespan, regulate capacitation and select normal sperm (for review see Talevi and Gualtieri, 2010). Sperm binding presents localization differences among diverse species, including sperm retention at the uterus and vagina in rabbit, cat and dog (Barberini et al., 1991, Chatdarong et al., 2004, England et al., 2013). At the oviduct, *in vivo*, sperm bind predominantly at the crypts of the uterotubal junction (UTJ) and caudal isthmus in sows (Tummaruk et al., 2008), at the caudal isthmus in cattle (Hunter and Wilmut, 1984), and at the ciliated

1
2
3 cells in the distal UTJ in bitches (England et al., 2013). In cats, the UTJ acts as sperm reservoir before
4
5 ovulation whereas the isthmus is a sperm reservoir around the time of ovulation (Chatdarong et al.,
6
7 2004). The mechanisms responsible for sperm binding and detachment from the oviductal reservoir are
8
9 under constant study, however, the molecular mechanisms involved require further investigation. Sperm
10
11 binding to oviductal epithelial cells has been attributed to spermadhesins in porcine (Liberda et al.,
12
13 2006), and to adsorbed seminal plasma proteins (BSP) in bovine (Gwathmey et al., 2006).

14
15 Previous work has linked oviductal annexins to sperm reservoir formation in cattle (Ignotz et al., 2007)
16
17 and pig (Teijeiro et al., 2009). In cow, Ignotz and coworkers, 2007, purified AnxA1, 2, 4 and 5 from
18
19 oviductal apical plasma membrane preparations based on affinity to BSP, and concluded that annexins
20
21 are candidates for sperm binding to the oviduct. In pig, AnxA1, 2 and 5 were isolated from oviductal
22
23 epithelial cell extracts based on affinity to sperm periacrosomal membrane proteins (Teijeiro et al.,
24
25 2009). The localization of the isolated annexins by immunohistochemistry showed that AnxA1 and
26
27 AnxA5 are present mainly in the cytoplasm of pig oviductal epithelial cells, while AnxA2 is found mainly
28
29 at the cilia of oviductal epithelial cells (Teijeiro et al., 2009). This led to the conclusion that, in pig, AnxA2
30
31 is the strongest candidate for sperm binding to the oviduct.

32
33 Annexins are a multifunctional family of membrane phospholipid-binding proteins which are able to
34
35 bridge or attach biological structures (reviewed in Grieve et al., 2012). AnxA2 is a member that can be
36
37 found in the nucleus, cytoplasm or extracellular matrix of a variety of cell types; and as a monomer or in
38
39 heterotetrameric form bound to S100A10 (AII_t), both forms associated with different biological
40
41 functions. S100A10 is a member of a group of small Ca²⁺-binding proteins with molecular weight of 10–
42
43 12 kDa (the S100 proteins; Donato, 1999), which is unique in that it is locked in a permanently open
44
45 conformation, comparable to the Ca²⁺-bound configuration of the other S100 proteins (for review see
46
47 Liu et al., 2015). It is also the most frequent binding partner of AnxA2, described more than 30 years ago
48
49 (Erikson et al., 1984). Extracellularly, AnxA2's largest studied function is as a cell surface protector for
50
51 the plasminogen receptor S100A10 (reviewed in Madureira et al., 2012). In addition, AnxA2 also
52
53 interacts with extracellular receptors such as Toll-Like receptor 4 (TLR4) (Swisher et al., 2010) and
54
55 ligands such as gastrin (Singh et al., 2007). Also in the cell surface, AnxA2 has been shown to function in
56
57 signal transduction (Drücker et al., 2013). At this location, the AII_t complex is associated not only to the
58
59 plasminogen receptor function, but also to cell recognition for phagocytosis, to adhesion of different cell
60
61 types in the bone marrow (Jung et al., 2007) and of endothelial and cancer cells (Myrvang et al., 2013).

1
2
3 The presence of AnxA2 in the porcine and bovine oviduct, its localization mainly at the cilia of oviductal
4 epithelial cells, structures that have been involved in sperm attachment in porcine (Suarez et al., 1991),
5 AnxA2's ability to bind to pig sperm periacrosomal membranes *in vitro* and to BSP in cow, and its
6 frequent association to S100A10, led us to hypothesize that AnxA2 might perform its sperm binding
7 function in association with S100A10. Thus, in this work we search for the presence of S100A10 and
8 analyze the subcellular location of both proteins in the oviduct. Also, as the oviductal epithelium is prone
9 to constant renovation in response to ovarian hormones, we reasoned that *ANXA2*'s and *S100A10*'s
10 expression may respond to female hormone variations. To examine this hypothesis we performed
11 hormone treatment experiments on primary culture of pig oviductal epithelial cells and computational
12 analysis of putative promoter regions on pig *ANXA2* and *S100A10* genes, searching for estrogen and
13 progesterone response elements (ERE and PRE). As the sperm reservoir is present in the oviduct of
14 numerous mammals and AnxA2 is involved in reservoir formation in cow and pig, we considered it
15 important to analyze if AnxA2 and S100A10 are present in the oviduct of other mammals as well, and
16 particularly in the human oviduct.
17
18
19
20
21
22
23
24
25
26
27
28
29
30

31 **Materials and methods**

32 33 34 Chemicals

35
36
37
38 Unless otherwise stated, chemicals were obtained from Sigma-Aldrich (Buenos Aires, Argentina).
39
40

41 42 Ethics statements

43
44
45 This study was approved by the Institutional Bioethical Board for the use of human samples, and by the
46 Bioethical Board for use Laboratory Animals for the use of animal samples, both from Facultad de
47 Ciencias Bioquímicas y Farmacéuticas, Universidad Nacional de Rosario, Argentina.
48
49
50

51 52 53 Oviducts collection

1
2
3 Domestic mixed breed cat and dog oviducts (10 of each) were obtained by surgery from Instituto
4 Municipal de Salud Animal (Rosario, Argentina). Rabbit (New Zealand) oviducts (10) were obtained by
5 surgery from Bioterio de Facultad de Ciencias Bioquímicas y Farmacéuticas, Universidad Nacional de
6 Rosario, Argentina. Cow (10, beef cattle) and pig (Large white) oviducts were obtained from a local
7 slaughterhouse and transported to the laboratory on ice. Human oviducts (five women) were obtained
8 from women subjected to endoscopic salpingectomy for non-malignant cause with the corresponding
9 acceptance of the patient, and written consent was obtained from all donors, at Hospital Provincial del
10 Centenario, Argentina.
11
12
13
14
15
16
17

18 19 20 Preparation of oviductal cell protein extracts

21
22
23 For western blot detection of AnxA2 and S100A10 among whole cell protein content from pig, human,
24 cow, cat, dog and rabbit oviducts were opened longitudinally and epithelia from the isthmus sections
25 were scraped with the blunt side of a scalpel blade. The cells were collected in RIPA buffer (25mM Tris-
26 HCl pH 7.6, 150mM NaCl, 1% NP-40, 1% sodium deoxycholate, 0.1% SDS, 5 mM EDTA and 50 mM DTT).
27 Protein concentration was determined by Qubit® device (Invitrogen, Buenos Aires, Argentina) according to
28 manufacturer's instructions.
29
30
31
32
33
34
35
36

37 Western blot

38
39
40 Oviductal cell protein extracts were used for 15% SDS-PAGE according to Laemmli 1970, using
41 Miniprotean 3 System (Bio-Rad, Hercules, CA). After electrophoresis, proteins were transferred to
42 nitrocellulose membranes (GE Healthcare, Argentina). Membranes were blocked with 5% dry milk in
43 TBS (25 mM Tris-HCl, pH 7.4, 150 mM NaCl) for 1 h, incubated with HH7 anti-AnxA2 monoclonal
44 antibody, raised against a synthetic peptide corresponding to amino acids 1-18 of human AnnexinAII,
45 (1:1000 v/v) (kindly gifted by Dr. Gerke from Institute of Medical Biochemistry Center for Molecular
46 Biology of Inflammation, University of Münster, Germany) and anti-S100A10 (cow) monoclonal
47 antibodies (1:1000 v/v, BD transduction Laboratories #610070), a kind gift from Dr. Melle (Core Unit
48 Chip Application (CUCA) Institute of Human Genetics and Anthropology, Universitätsklinikum Jena,
49 Germany). Then, membranes were washed twice for 15 min with TBS and incubated with anti-mouse
50
51
52
53
54
55
56
57
58
59
60

1
2
3 IgG-horseradish peroxidase (Amersham Biosciences, UK) 1:5000 v/v in TBS, during 1 h at room
4 temperature. After washing twice with TBS and once with TTBS (TBS plus 0.05% Tween-20), peroxidase
5 activity was revealed using enhanced chemiluminescence detection with ECL (Amersham Bioscience,
6 UK) according to manufacturer's instructions. Monoclonal antibodies anti- α tubulin (sc-8035) (1:1000
7 v/v dilution) and anti-actin (sc-1616) (1:1000 v/v dilution), used as procedure and cellular
8 compartment controls, were provided by Santa Cruz Biotechnology (CA, USA). When these controls were
9 not appropriated, membranes were stained with Ponceau Red to check quantitative transference of
10 proteins. For relative quantification, films were analyzed with Gel-Pro Analyzer version 4.0 (Media
11 Cybernetics).

12 Immunohistochemistry

13
14
15
16
17
18
19
20
21
22
23
24
25
26 The isthmic portions of porcine and human oviducts were separated by dissection into 1-cm segments
27 and fixed in 4% formaldehyde. Tissue was dehydrated, embedded in paraffin, cut into
28 5- μ m sections, and mounted on slides optimized for immunohistochemistry (Frosted HiFixNH, TNT,
29 Argentina). Tissue sections were deparaffinised in xylene, and then rehydrated through graded dilutions
30 of ethanol (100%, 95%, 70%, and 35%), followed by two washes in TBS. Antigen retrieval was
31 performed by microwaving slides for 20 min in 10 mM trisodium citrate (pH 6). Endogenous peroxidases
32 were inactivated by incubating slides for 30 min in 0.3% H₂O₂ in methanol, followed by three 5 min
33 washes in TBS. Sections were blocked with 5% bovine serum albumin, 0.2% Triton X-100 in TBS for 60
34 min and then treated with HH7 anti-AnxA2 antibodies (1:100) or anti-S100A10 antibodies (1:50) 1 h at
35 37°C followed by anti-mouse IgG-horseradish peroxidase (diluted 1:100) for 1h. Horseradish peroxidase
36 activity was visualized by development with 3, 3'-diaminobenzidine tetrahydrochloride and stopping the
37 reaction by washing in water. Counterstaining was performed by Haematoxylin staining. Controls were
38 run by omission of the primary antibody (data not shown).

39 Preparation of oviductal cell suspensions and protein extracts from different cell fractions

40
41
42
43
44
45
46
47
48
49
50
51
52
53
54
55
56 Porcine oviductal epithelial cells were prepared based on previous reports (Marini and Cabada, 2003).
57 Briefly, isthmuses were opened longitudinally and the epithelial cells were scraped using the blunt side
58
59
60

1
2
3 of a scalpel blade. The cell-containing suspension was centrifuged at 100 x g for 3 min, suspended in PBS
4 (137 mM NaCl, 2.7 mM KCl, 10 mM Na₂HPO₄, 2 mM KH₂PO₄, pH 7.2) and incubated for 1 h at 4°C. After
5 incubation, cells were centrifuged at 100 x g for 3 min and supernatants were recovered, centrifuged at
6 16,000 x g for 15 min and stored at -20°C for further protein analysis. Then, epithelial cells were
7 suspended in distilled water and disrupted in Potter homogenizer. Fractions enriched in membranes
8 were prepared by differential centrifugation as described elsewhere (Marini and Cabada, 2003).
9 Detergent protein extracts were prepared by incubation of membrane fractions with 0.2% Triton X-100,
10 10 mM Tris-HCl pH 7.5 for 1 h at 4 °C. After incubation, membrane fractions were centrifuged at
11 105,000 x g at 4°C for 1 h, the supernatant was recovered and membrane fractions were suspended in
12 0.5 M NaCl, 10 mM Tris-HCl pH 7.5 and incubated for 1 h at 4°C for high ionic strength protein extraction.
13 After centrifugation at 105,000 x g, the supernatant was recovered and stored at -20°C until use.

14
15
16
17
18
19
20
21
22
23 Isolation of apical plasma membranes (APM) by peeling was based on the method described by Teijeiro
24 and Marini, 2012. Batches of ten porcine oviducts were trimmed from reproductive tissues and the
25 isthmus section of each oviduct was separated and opened longitudinally. Then, each section was
26 stretched and subjected with pins. Whatman filter paper (0.18 mm thick, Whatman International,
27 Maidstone, UK) strips were pre-wetted with deionized water, put over the exposed epithelium and
28 incubated for 5 min. After peeling, the APM retained at the surface of the paper were harvested by
29 rehydration of strips in 15 ml polystyrene conical tubes with 5 ml of deionized water. Then, proteins
30 from the harvested APM were obtained by incubation in RIPA buffer.

31
32
33
34
35
36
37
38
39 Porcine oviductal cell membranes and cytoplasmic proteins were obtained as previously reported by
40 Teijeiro and Marini, 2012. Briefly, epithelial cells obtained by scrapping epithelia were disaggregated by
41 passing through a 21-gauge needle to separate the cells. After this, the suspensions were washed twice in
42 TALP by 5 min centrifugation at 650 x g at 4°C. The cells were disrupted in deionized water in Potter
43 homogenizer and centrifuged at 1000 x g 10 min at 4°C. The supernatant was ultracentrifuged for 1 h at
44 105,000 x g at 4°C. Fractions enriched in membranes were recovered from the pellet and the
45 supernatant of these fractions was considered as cytoplasmic fraction.

46
47
48
49
50
51
52
53
54 In situ biotinylation of the oviductal luminal proteins
55
56
57
58
59
60

1
2
3 The biotinylation protocol was based on the method described by Holt et al., 2005 and Teijeiro and
4 Marini, 2012. Batches of ten oviducts were trimmed from reproductive tissues and washed in ice-cold
5 PBS. The isthmus section of each oviduct was separated, flushed with 2 ml of ice-cold PBS/CM (PBS
6 containing 1.3 mM CaCl₂ and 1 mM MgCl₂, pH 7.2) and then with 2 ml of biotinylating reagent EZ-Link®
7 Sulfo-NHS-SS-Biotinylation kit (Pierce, Thermo Scientific, USA) at 0.5 mg/ml in PBS/CM. The isthmus
8 sections were clamped at each end, filled with the same solution and incubated 30 min at room
9 temperature. After incubation, isthmus sections were emptied and the excess of biotin was inactivated
10 by flushing with quenching solution (Pierce, Thermo Scientific, USA). The oviduct sections were opened
11 longitudinally and epithelia were scraped and transferred to a 50 ml conical tube. Scraped cells were
12 rinsed three times with 5 ml of TBS by centrifugation at 500 x g for 3 min at 4°C. After rinsing, cells were
13 suspended in lysis buffer (Pierce, Thermo Scientific, USA) and sonicated at 1.5%, five 1-second bursts.
14 Cells were incubated 30 min on ice, vortexing every 5 min for 5 sec and then centrifuged at 10,000 x g for
15 2 minutes at 4°C. Biotinylated proteins were purified by affinity to NeutrAvidin™ Agarose (Pierce,
16 Thermo Scientific, USA) according to manufacturer's instructions and then subjected to SDS-PAGE and
17 detection by incubation with 1µg/ml peroxidase-conjugated streptavidin (Pierce, Thermo Scientific,
18 USA). Labeled proteins were revealed using enhanced chemiluminescence detection as described for
19 western blot. As a control, tissue was processed without biotinylating reagent.
20
21
22
23
24
25
26
27
28
29
30
31
32
33
34
35
36

37 Immunoprecipitation

38
39
40
41 For immunoprecipitation assays, 200 µl of protein extracts containing 600 µg of protein and obtained by
42 incubation with 0.2% Triton X-100, 10 mM Tris-HCl pH 7.5 from membrane enriched fractions as
43 described previously, were incubated overnight at 4°C with 2 µl of HH7 anti-AnxA2 antibodies. One
44 hundred microliters of protein A/G Sepharose (Pierce® Biotechnology, Thermo Scientific, IL, USA) were
45 washed three times with PBS and non-specific binding sites blocked by 2 h incubation with 2% BSA-PBS.
46 After washing with PBS, the resin was incubated with the solution containing HH7 anti-AnxA2 antibodies
47 and protein extracts for 2 h. Following incubation the resin was washed 5 times with PBS and antibody-
48 protein complexes were recovered by incubation in 20 µl of SDS-PAGE loading buffer. Then, purified
49 protein complexes were subjected to western blot for AnxA2 and S100A10 detection. As a control,
50 irrelevant mouse IgG was used, and only the expected bands corresponding to mouse IgG were detected.
51
52
53
54
55
56
57
58
59
60

Primary oviductal cell culture

Freshly collected porcine oviducts were dissected free from surrounding tissues and washed twice in sterile PBS at 4 °C. Then, they were cut, flushed with sterile PBS and squeezed by pressure with tweezers. Batches of cells from 10 oviducts corresponding to diverse ovarian status were used. Laminae of porcine oviduct epithelial cells selected on the basis of ciliary beating, washed by centrifugation at 1500 x g for 5 min, and incubated in M199 medium supplemented with 10% (v/v) fetal bovine serum (Internegocios, Argentina), 50 µg/ml gentamycin (Gibco Life Technologies, Argentina) and antibiotic antimycotic solution (100 UI penicillin, 10 µg streptomycin and 0.25 µg amphotericin B per mL, Sigma-Aldrich A5955). Cultures were performed at 39°C, 5% CO₂ in air, in 100 mm petri dishes (Greiner bio-one). Fresh media changes were performed every 48 h until 80% of confluence. Then, cells were incubated for 24 h in DMEM:F12 medium without phenol red and fetal bovine serum, and with the corresponding antibiotics. After that, cells were incubated for 24 h with different concentrations of β-estradiol (Sigma E-8875) or progesterone (Sigma P-0130) using ethanol as solvent. Primary culture controls were performed using the same volume of ethanol. Cell viability was assessed by the 0.2% Trypan blue exclusion method. Cells were harvested by incubation for 10 min with trypsin at 37°C, centrifugation, PBS wash (twice), and were suspended in RIPA buffer for protein extraction. Three independent experiments were performed, and three repetitions from each primary culture pool were processed.

Bioinformatics

The sequence of the pig ANXA2 gene (ID: 406192) located in chromosome 1, contig NC_010443.4, and the sequence of pig S100A10 gene (ID: 100515138) located in chromosome 4, contig NC_010446.4, were subjected to analysis against genome database to find corresponding promoter sequences. The relevant promoter sequences found were evaluated for regions homologous to known hormone response elements using the MatInspector Professional software (Genomatix suite v3.2, free trial) on the vertebrate's transcription factor library.

Statistical analysis

Statistical analysis was performed for AnxA2 and S100A10 relative detection on western blots. When F-test results were significant in ANOVA, individual means were further tested by Tukey's multiple range test (Motulsky, 1995). Differences respect to the control without hormones and between treatments were indicated as #, ##, ###, and *. Statistical significance $p < 0.05$.

Results

Detection and immunohistochemical localization of S100A10 in human and pig oviducts

To search for the presence of AnxA2's most frequent partner S100A10 in human and porcine oviductal epithelial cells, western blot experiments of protein extracts obtained in RIPA buffer, were performed with anti-S100A10 antibodies. A band was noted at the expected apparent molecular mass (10 kDa) (Fig. 1a). When the same blots were used for AnxA2 detection, a band corresponding to the expected apparent molecular mass (38 kDa) was observed (Fig. 1a).

The localization of S100A10 was analyzed by immunohistochemistry and compared with that of AnxA2 (Fig. 1b). S100A10 appears to localize to the apical cytoplasm of human and porcine oviductal ciliated epithelial cells, and shares this location with AnxA2 (Fig. 1b). AnxA2 localizes mainly at the cilia of ciliated cells, as far as the method allows these structure's discrimination (Fig. 1b), as reported previously for pig (Teijeiro et al., 2009).

Subcellular fractionation of pig oviductal epithelial cells and AnxA2 and S100A10 detection

1
2
3 AnxA2 is considered to perform its cytoplasmic and cell bridging activities in association with S100A10
4 (Luo and Hajjar, 2013). To connect sperm with the oviduct, the proteins should be present at the outer
5 side of the apical membranes of oviductal epithelial cells. To analyze this hypothesis, extracellular
6 peripheral membrane proteins of the oviductal epithelial cells were extracted by PBS treatment, based
7 on the ionic strength of its NaCl component. This moderate ionic treatment allowed detecting AnxA2
8 very clearly by western blot among the extracted proteins, however S100A10 was not detected (Fig. 2a,
9 line 1). When membrane fractions were prepared and proteins extracted with Triton X-100, AnxA2 was
10 detected, as was a slight S100A10 band (Fig. 2a, line 2). The membranes were subsequently treated with
11 0.5 M NaCl, and both AnxA2 and S100A10 were clearly detected by western blot in the supernatant (Fig.
12 2a, line 3). The extraction of both proteins with detergent and successive salt treatment indicates that
13 AnxA2 is bound to membranes, and probably in different configurations with distinct binding affinities.
14 However, AnxA2 is also present at the extracellular membrane surface of the cells, as it could be
15 detached from the cells by PBS treatment.
16
17
18
19
20
21
22
23
24
25
26
27

28 To further analyze the localization of these proteins in the oviductal cells, protein extracts from apical
29 plasma membranes were prepared by peeling (Teijeiro and Marini, 2012), and compared with
30 cytoplasmic preparations and membrane enriched extracts obtained by cellular fractionation, by
31 western blot with anti-AnxA2 and anti-S100A10 antibodies (Fig. 2b). Detection of actin and tubulin were
32 used as compartment control, considering that beta-actin is a membrane-cytoskeletal adaptor protein
33 and is therefore associated with cell membranes, while alpha-tubulin should only be found in the
34 cytoplasmic fraction. AnxA2 was detected in both membrane preparations, however S100A10 was
35 absent from APM (peeling) preparations (which are also devoid of tubulin) and present in the
36 cytoplasmic and membranes extracts (Fig. 2b). This result is in accordance with the previous, indicating
37 absence of S100A10 from the extracellular membrane surface of the cell's apical domain (Fig. 2a). It also
38 indicates that S100A10 is not associated to the inner leaflet of the apical plasmatic membrane, as it is not
39 present in APM. S100A10 is probably bound to membranes that belong to the endomembrane system,
40 and probably through AnxA2.
41
42
43
44
45
46
47
48
49
50
51
52

53 To clearly establish the presence or absence of AnxA2 and S100A10 at the extracellular membrane
54 surface of apical plasma membranes, *in situ* biotinylation of proteins exposed at the lumen of porcine
55 oviducts was performed, followed by cell disaggregation and protein extracts preparation. The specificity
56
57
58
59
60

1
2
3 of this technique for only extracellular surface proteins despite the fragility of the oviduct has been
4 already demonstrated (Holt et al., 2005; Teijeiro and Marini, 2012). In the context of this work, if
5 biotinylation would proceed beyond the surface of the tissue or cell rupture would occur, cytoplasmic
6 proteins biotinylation would include S100A10. However, purified biotinylated proteins contained AnxA2,
7 but not S100A10, as detected by western blot (Fig. 2c). This confirms the absence of S100A10 from the
8 extracellular membrane surface of the cells and also extracellular location for AnxA2, in association to
9 the plasma membrane. The control performed without biotinylating reagent shows minor bands of *in*
10 *vivo* biotinylated proteins.
11
12
13
14
15
16
17
18
19
20
21

22 Interaction between AnxA2 and S100A10 in pig oviductal epithelial cells

23
24
25
26

27 The association of AnxA2 and S100A10 to form AII_t is related to the proteins function. To search for a
28 functional link between AnxA2 and S100A10 at the cytoplasm of the oviductal epithelial cells,
29 immunoprecipitation experiments were performed. Protein extracts from membrane fractions prepared
30 as described previously were used for immunoprecipitation with anti-AnxA2 antibodies. As shown in Fig.
31 2d, S100A10 co-immunoprecipitates, showing interaction between AnxA2 and S100A10 on the
32 intracellular membranes. Control with irrelevant mouse IgG allowed the detection only of IgG (Fig.2d).
33
34
35
36
37
38
39
40
41

42 Ovarian hormones influence on the amounts of AnxA2 and S100A10 proteins in pig oviductal cells

43
44
45
46

47 Cyclic changes on the oviductal epithelia are dependent on ovarian-derived steroid hormones, estradiol
48 and progesterone (Hess et al, 1994). To analyze possible variations on the amount of ANXA2 and
49 S100A10 proteins in oviductal cells in response to progesterone and estradiol, primary oviductal cell
50 cultures were used. The culture medium was supplemented with varying amounts of ovarian hormones,
51 chosen based on reported blood concentrations (Mariscal et al., 1998). After culture, western blot
52 analysis of protein extracts prepared with RIPA was performed (Fig. 3a), and followed by optical
53
54
55
56
57
58
59
60

1
2
3 densitometry analysis relative to tubulin content (Fig. 3b). An increase of AnxA2 protein was noted in
4
5 cells cultured in the presence of progesterone at all the concentrations tested respect to controls (no
6
7 hormone treatment) and to estrogen treatment (Fig. 3a, b). S100A10 protein increased on cells cultured
8
9 with estradiol respect to no hormone treatment, showing the highest level at 25 pg/ml estradiol. When
10
11 cells were cultured with progesterone, S100A10 also showed higher levels than without hormones, but
12
13 lower than in the presence of estradiol (Fig. 3a, b).

14 15 16 17 18 Bioinformatic analysis of *ANXA2* and *S100A10* promoters

19
20
21
22
23 To give insight into the possible mechanisms related to the influence of ovarian hormones on *ANXA2* and
24
25 *S100A10* expression in the porcine oviduct, bioinformatics tools were used. For AnxA2 contig
26
27 NC_010443.4 located in chromosome 1 was analysed *in silico*, showing two overlapping promoter
28
29 regions with relevant associated RNAs (locus GXP_2003513, strand +; localization 133367987-
30
31 123368668 and locus GXP_4922954, strand +, localization 123367516-123368116, Fig. 3c).
32
33 Bioinformatics evaluation for regions homologous to known hormone response elements showed that
34
35 one of the predicted promoters presents a PRE (Fig. 3c) in accordance with the experimental results (Fig.
36
37 3a, b). Thus, it is possible that *ANXA2* might be regulated by progesterone at the transcription level, using
38
39 this promoter.

40
41 For *S100A10*, the corresponding sequence located in chromosome 4, contig NC_010446.4, was analyzed.
42
43 Again two relevant promoter sequences were predicted, with relevant associated RNAs (locus
44
45 GXP_2006651, strand+, localization 106271232-106272464 and locus GXP_4943704, strand+,
46
47 localization 106270261 a 106270861). Further bioinformatics analysis showed that both promoters
48
49 were associated to EREs (Fig. 3c).

50
51
52
53
54 AnxA2/S100A10's detection in the oviducts of cow, cat, dog and rabbit

1
2
3 The previous results show a probable biological function for AnxA2 in sperm binding at the extracellular
4 domain of porcine oviductal epithelial cells, and another for the AIIIt complex at the membranes present
5 in the cytoplasm. To find out if the proteins are widespread in the mammalian oviduct, we searched for
6 the presence of both proteins in whole protein cell extracts obtained with RIPA from oviductal epithelial
7 cells of the domestic animals cow, cat, dog, and rabbit. As shown in Fig. 4, AnxA2 and S100A10 were
8 detected by western blot in all the species tested.
9
10
11
12
13
14
15
16
17

18 Discussion

19
20
21
22
23 This study focuses on the presence and localization of AnxA2 and its partner S100A10 in the oviduct.
24 Previous work conducted by Teijeiro et al. (2009) has demonstrated that AnxA2 localizes at the cilia of
25 sow oviductal epithelial cells and interacts, *in vitro*, with boar sperm periacrosomal membranes. AnxA2
26 has been also reported in cilia of cow oviductal cells, linked to sperm binding to form a reservoir,
27 through proteins absorbed to the sperm head (Ignotz et al., 2007). Since AnxA2 has been described to
28 interact with S100A10 to accomplish several structure linking functions, we searched for the possible
29 presence of S100A10 in the porcine oviduct. In this regards, we first describe the presence of S100A10 in
30 the oviduct (Fig. 1) and its localization mainly at the apical cytoplasm of the porcine oviductal epithelial
31 cells (Fig. 1b, 2b, c). The protein is not only detected in the porcine model, but also in the human oviduct,
32 sharing subcellular localization (Fig. 1b) despite the different origin of the oviducts (post-mortem and
33 surgical, respectively). In view of the multiple publications reporting varied cellular locations for both
34 proteins and a relationship between location and biological functions (reviewed in Gerke and Moss,
35 2002; Grieve et al., 2012 and Luo and Hahhar, 2013), we reasoned that it would be important to further
36 analyze the cellular location of both proteins.
37
38
39
40
41
42
43
44
45
46
47
48
49

50 We find that AnxA2, but not S100A10, can be easily freed from pig oviductal epithelial cell's surface (Fig.
51 2a, lane 1). This surprising result differs from the reported in other cell types, where at least 90% of
52 extracellular AnxA2 is present as the AIIIt heterotetramer at the extracellular surface (Vedeler et al.,
53 2012), however it is in agreement with the reported for reproductive tissues in sheep (Zhang and Wu
54
55
56
57
58
59
60

2007). In order to further analyze the previous results indicating the extracellular location of AnxA2 and intracellular location of S100A10 and AnxA2, we proceeded to prepare protein extracts from membrane enriched fractions of porcine oviductal epithelial cells by successive treatment with detergent and high ionic strength. The extraction of S100A10 upon both successive treatments and the increased amount extracted after the second procedure, ionic strength based processing (Fig. 2a), suggest that S100A10 is probably associated to the membranes in two distinct forms, with different affinity for the membranes. Extensive studies of the AIIIt complex support a model in which AnxA2 binds to anionic phospholipids, calcium, heparin, DNA or F-actin through its carboxyl-terminal core region, while the amino-terminal tail binds S100A10 by hydrophobic contact (for review see Bharadwaj et al., 2013). Two models are supported for AIIIt, in one of them AnxA2 molecules bind to the membrane and the S100A10 dimer resides on the outer side of the complex, facilitating interaction with other proteins and membranes (Gerke and Moss 2002, Illien et al., 2010). The other model proposes that the two monomeric AnxA2 molecules are bridged by a central dimer made up of S100A10 (Ayala-Sanmartin et al., 2008). As AIIIt was dissociated from oviductal epithelial cell membranes by successive treatments with detergent and high concentration of NaCl, the complex might be bound to the membranes in both reported conformations, showing differential binding properties. Thus, AIIIt may be present in the endomembrane system structures at the apical cytoplasm in the two previously reported conformations.

Cytoplasmic, membrane enriched, and peeling-obtained APM extracts from pig oviductal epithelial cells were compared for AnxA2 and S100A10 content. AnxA2 was present in membrane and APM protein extracts and S100A10 in the cytoplasmic and membrane fractions but not APM extracts (Fig. 2b). This supports the previous results indicating the presence of AnxA2 at the extracellular surface of the apical plasma membrane and of S100A10 only at the apical cytoplasm (Fig. 2a). The absence of AIIIt from the APM extracts indicates that it is not associated to the inner leaflet of the cytoplasmic membrane, thus, it must be bound to membranous structures present at the apical cytoplasm. Also, as APM are capable of binding motile sperm (Teijeiro and Marini, 2012), the lack of detectable S100A10 in this extract allows inferring that S100A10 is not necessary for sperm binding. As a conclusive evidence of the lack of detectable S100A10 in the extracellular domain of pig oviductal epithelial cells, *in situ* biotinylation of oviductal luminal proteins was performed, and AnxA2 but not S100A10 was detected at the oviductal surface (Fig. 2c). Altogether, the results support that, in pigs, AnxA2 is present at the oviductal epithelial

1
2
3 cells surface devoid of S100A10, probably associated to other proteins; and that AIIIt is associated to
4
5 endomembrane structures in two conformations with different binding characteristics, that may
6
7 correspond to the described by Gerke and Moss, 2002, and by Ayala-Sanmartin et al., 2008. It is to note
8
9 that monomeric AnxA2 and the heterotetrameric AIIIt complex present different biochemical properties,
10
11 which are related to their biological functions (Waisman, 1995; Gerke and Moss, 2002).

12
13 At the endomembrane system, a functional interaction between AnxA2 and S100A10 was inferred in pig
14
15 by immunoprecipitation with anti-AnxA2 antibodies (Fig. 2d). The complex, associated to intracellular
16
17 membranes in oviductal epithelial cells, may function at several of the previously described biological
18
19 activities for AIIIt in membrane association: membrane organization and trafficking, cell polarization,
20
21 endocytosis, exocytosis, modulation of membrane aggregation (Rescher and Gerke 2004; Gerke et al.,
22
23 2005; Illien et al., 2010; Drücker et al., 2013). However, the AIIIt complex may also promote AnxA2
24
25 translocation to the cell surface, as has been shown in other cellular models (Valapala et al., 2014).

26
27 At the extracellular membrane surface, AnxA2 might assemble with other proteins to form a multi-
28
29 protein sperm receptor complex as it does in other cell types where it exhibits receptor functions (Allen
30
31 et al., 2012). In epithelia, AIIIt associates with epithelial E-cadherin and endothelial VE-cadherin (Yamada
32
33 et al., 2005, Su et al., 2010) and, recently, E-cadherin has been shown to participate in bovine sperm
34
35 interaction with the oviduct (Caballero et al., 2014). It is possible that an interaction between AnxA2 and
36
37 E-cadherin in the oviductal epithelium mediates sperm-oviduct binding.

38
39 *ANXA2* expression is regulated in varied tissues at the transcriptional and translational levels and the
40
41 protein is also prone to post-translational modification (reviewed in Bharadwaj et al., 2013). In this work
42
43 we show that the amount of AnxA2 and S100A10 proteins in pig oviductal cells is higher upon
44
45 progesterone treatment (Fig. 3a, b). We report the presence of a PRE related to the *ANXA2* promoter
46
47 region (Fig. 3c), which might be indicative of possible regulation at the transcriptional level. The
48
49 association of the PRE to the most downstream promoter predicted on *ANXA2* indicates that this
50
51 promoter might be used for progesterone regulated transcription in oviductal cells. PRE sequences were
52
53 not found associated to the *S100A10* promoter. The regulation of *ANXA2* and *S100A10* expression by
54
55 progesterone may alternatively proceed by a mechanism different than transcriptional regulation. In
56
57 endothelial cells, AnxA2 plays an obligatory role in the regulation of S100A10 by protecting it from rapid
58
59 ubiquitin-mediated degradation (He et al., 2008). The absence of a predicted PRE element associated to
60

1
2
3 *S100A10* promoter in the porcine genome, together with an increase of the S100A10 protein and of
4
5 AnxA2 upon progesterone treatment, may be indicative of a mechanism similar to that of endothelial
6
7 cells in the oviductal epithelium. The increase of S100A10 might be related to lower degradation instead
8
9 of increased production. The increase of AnxA2 and S100A10 after treatment with progesterone has also
10
11 been reported in sheep (Zhang and Wu, 2007). Upon estradiol treatment, S100A10 showed an increase
12
13 respect to the control without hormones, with the highest levels found at 25 pg/ml (Fig. 3a, b), in
14
15 agreement with the presence of an ERE associated to the predicted *S100A10* promoter region (Fig. 3c).
16
17 However, regulation at any level other than transcription may not be ruled out. According to Mariscal et
18
19 al. 1998, this concentration of estradiol is found in sow's blood at days 0 to 1 of the estrous cycle. Further
20
21 studies are needed to understand the relationship between the estrus cycle and the regulation
22
23 mechanisms of AnxA2 and S100A10 in the oviduct. The distribution of sperm in the oviduct is dependent
24
25 on the estrus cycle. In pig, ovulation is accompanied by sperm ultrastructural changes and relocation of
26
27 sperm from the mucosal crypts/interfolds towards the more central part of the mucosal surface (Mburu
28
29 et al., 1997), where AnxA2 is predominantly localized. Further analysis of the possible link between the
30
31 amount of AnxA2 present at the extracellular surface of the cells, where it can bind sperm, and the
32
33 ovarian hormones is required. Studies are being conducted on our laboratory to this end.

34
35 The experiments performed with pig oviducts in this study include fixed oviducts, primary cell culture,
36
37 oviduct treatment ex-situ, cell fractionation and protein extracts preparation by varied methods,
38
39 however, previously reported results indicate consistency of all the methods as to sperm attachment
40
41 (Töpfer-Petersen et al., 2002; Holt et al., 2005; Ignatz et al., 2007; Teijeiro and Marini, 2009 and 2012)
42
43 and there is a considerable coincidence in the results reported here using different techniques.

44
45 We extended this work to the detection of S100A10 and AnxA2 in the oviduct of four other mammals,
46
47 selected for their importance as farm animals or pets (Fig. 4). The proteins were detected in all the
48
49 oviduct extracts by western blot (Fig. 4), regardless of the location of the sperm reservoir of the
50
51 particular species. This is in agreement with a conserved function other than sperm reservoir formation
52
53 for Allt in the oviduct of the studied mammals.

54
55 In summary, we report the presence of AnxA2 and S100A10 in the oviducts of human, pig, cow, cat, dog
56
57 and rabbit. In the pig and human oviducts, we show that S100A10 localizes at the apical cytoplasm. In
58
59

1
2
3 pig, we also show an association of S100A10 to the endomembrane system and to AnxA2. In the
4 extracellular domain of the pig oviductal epithelial cells, AnxA2 devoid of S100A10 may be involved in
5 sperm binding, either as a monomer or in association with other proteins. The ovarian hormones
6 influence the amounts of AnxA2 and S100A10 found in pig oviductal epithelial cells. The most striking
7 outcome of this work is that, at least in pigs, AnxA2 may exert the oviductal cell-sperm contact function
8 without forming a complex with S100A10.
9
10
11
12
13

14 15 16 17 **Acknowledgments**

18
19 We thank Dr. Gerke for HH7 anti-AnxA2 antibodies and Dr. Melle for anti-S100A10 antibodies. We also
20 thank Frigorífico Paladini SA for providing gilt's oviducts and IMUSA, Rosario for pet's oviducts.
21
22
23

24 **References**

- 25
26
27 Allen KL, Fonseca FV, Betapudi V, Willard B, Zhang J, McCrae KR (2012) A novel pathway for human
28 endothelial cell activation by antiphospholipid/anti- β 2 glycoprotein I antibodies. *Blood* 119(3):884-893
29
30 Ayala-Sanmartin J, Zibouche M, Illien F, Vincent M, Gallay J (2008) Insight into the location and dynamics
31 of the annexin A2 N-terminal domain during Ca^{2+} -induced membrane bridging. *Biochim Biophys Acta*
32 1778:472-482
33
34
35
36
37 Baranda-Avila N, Cardoso-Rangel ME, Cerbón M, Camacho-Arroyo I, Mendoza-Rodríguez CA, Villaseñor-
38 Gaona H, Anzaldúa-Arce SR (2010) Differential expression of estrogen receptor alpha gene in the
39 ampullae and isthmus regions of the rabbit oviduct during early pregnancy. *Anim Reprod Sci* 121(3-
40 4):286-293
41
42
43
44
45
46 Bharadwaj A, Bydoun M, Holloway R, Waisman D (2013) Annexin A2 Heterotetramer: Structure and
47 Function. *Int J Mol Sci* 14:6259-6305
48
49
50 Caballero J, Gervasi MG, Veiga MF, Dalvit GC, Perez-Martínez S, Cetica PD, Vazquez-Levin MH (2014)
51 Epithelial cadherin is present in bovine oviduct epithelial cells and gametes, and is involved in
52 fertilization-related events. *Theriogenology* 81:1189-1206
53
54
55
56
57
58
59
60

1
2
3 Chatdarong K, Lohachit C, Linde-Forsberg C (2004) Distribution of spermatozoa in the female
4 reproductive tract of the domestic cat in relation to ovulation induced by natural mating. *Theriogenology*
5 62(6):1027-1034
6

7
8
9 Donato R (1999) Functional roles of S100 proteins, calcium-binding proteins of the EF-hand type.
10 *Biochim Biophys Acta* 1450(3):191-231
11

12
13 Drücker P, Pejic M, Galla HJ, Gerke V (2013) Lipid segregation and membrane budding induced by the
14 peripheral membrane binding protein annexin A2. *J Biol Chem* 288(34):24764-24776
15

16
17 England GC, Burgess CM, Clutterbuck AL, Freeman SL (2013) Epithelial surface changes
18 and spermatozoa storage in the reproductive tract of the bitch. *Vet J* 195(2):185-191
19

20
21 Erikson E, Tomaszewicz HG, Erikson RL (1984) Biochemical characterization of a 34-kilodalton normal
22 cellular substrate of pp60v-src and an associated 6-kilodalton protein. *Mol Cell Biol* 4:77-85
23

24
25 Gerke V, Moss SE (2002) Annexins: From structure to function. *Physiol Rev* 82:331-371
26

27
28 Gerke V, Creutz CE, Moss SE (2005) Annexins: linking Ca²⁺ signalling to membrane dynamics. *Nat Rev*
29 *Mol Cell Biol* 6:449-461
30

31
32 Grieve AG, Moss SE, Hayes MJ (2012) Annexin A2 at the Interface of Actin and Membrane Dynamics: A
33 Focus on Its Roles in Endocytosis and Cell Polarization. *Int J Cell Biol* 2012:852430
34

35
36 Gwathmey TM, Ignatz GG, Mueller JL, Manjunath P, Suarez SS (2006) Bovine seminal plasma proteins
37 PDC-109, BSP-A3, and BSP-30-kDa share functional roles in storing sperm in the oviduct. *Biol Reprod*
38 75(4):501-507
39

40
41
42 He KL, Deora AB, Xiong H, Ling Q, Weksler BB, Niesvizky R, Hajjar KA (2008) Endothelial cell annexin A2
43 regulates polyubiquitination and degradation of its binding partner S100A10/p11. *J Biol Chem*
44 283:19192-19200
45

46
47 He KL, Sui G, Xiong H, Broekman MJ, Huang B, Marcus AJ, Hajjar KA (2011) Feedback regulation of
48 endothelial cell surface plasmin generation by PKC-dependent phosphorylation of annexin A2. *J Biol*
49 *Chem* 286(17):15428-15439
50

51
52 Hess AP, Nayak NR, Giudice LC (1994) Chapter 9. In: Knobil and Neill (ed) *Physiology of Reproduction*.
53 Raven Press, New York, USA, pp 341-345 and pp 337-381
54
55
56
57
58
59
60

1
2
3 Holt W, Elliott RM, Fazeli A, Satake N, Watson PF (2005) Validation of a strategy for studying surface-
4 exposed proteins involved in porcine sperm-oviduct contact interaction. *Reprod Fert and Dev* 17:683-
5 692
6
7

8
9 Hunter RH (1984) Pre-ovulatory arrest and peri-ovulatory redistribution of competent spermatozoa in
10 the isthmus of the pig oviduct. *J Reprod Fertil* 72:203-211
11

12 Hunter RH, Barwise L, King R (1982) Sperm transport, storage and release in the sheep oviduct in
13 relation to the time of ovulation. *Br Vet J* 138:225-232
14

15 Hunter RH, Wilmut I (1984) Sperm transport in the cow: peri-ovulatory redistribution of viable cells
16 within the oviduct. *Reprod Nutr Dev* 24:597-608
17

18
19 Ignatz GG, Cho MY, Suarez SS (2007) Annexins are candidate oviductal receptors for bovine sperm
20 surface proteins and thus may serve to hold bovine sperm in the oviductal reservoir. *Biol Reprod*
21 77(6):906-913
22
23

24
25 Illien F, Finet S, Lambert O, Ayala-Sanmartin J (2010) Different molecular arrangements of the tetrameric
26 annexin 2 modulate the size and dynamics of membrane aggregation. *Biochim Biophys Acta* 1798:1790-
27 1796
28
29

30
31 Jung Y, Wang J, Song J, Shiozawa Y, Wang J, Havens A, Wang Z, Sun YX, Emerson SG, Krebsbach PH,
32 Taichman RS (2007) Annexin II expressed by osteoblasts and endothelial cells regulates stem cell
33 adhesion, homing, and engraftment following transplantation. *Blood* 110(1):82-90
34
35

36
37 Laemmli UK (1970) Cleavage of structural proteins during the assembly of the head of bacteriophage T4.
38 *Nature* 227:680-685
39
40

41
42 Liberda J, Manásková P, Prelovská L, Tichá M, Jonáková V (2006) Saccharide-mediated interactions of
43 boar sperm surface proteins with components of the porcine oviduct. *J Reprod Immunol* 71(2):112-125
44
45

46
47 Liu Y, Myrvang HK, Dekker LV (2015) Annexin A2 complexes with S100 proteins: structure, function and
48 pharmacological manipulation. *Br J Pharmacol* 172:1664-1676
49
50

51
52 Luo M, Hajjar KA (2013) Annexin A2 System in Human Biology: Cell Surface and Beyond. *Semin Thromb*
53 *Hemost* 39(4):338-346
54
55

1
2
3 Madureira PA, O'Connell PA, Surette AP, Miller VA, Waisman DM (2012) The Biochemistry and
4 Regulation of S100A10: A Multifunctional Plasminogen Receptor Involved in Oncogenesis. *J Biomed*
5 *Biotech* doi:10.1155/2012/353687
6
7

8
9
10 Marini PE, Cabada MO (2003) One step purification and biochemical characterization of a spermatozoa-
11 binding protein from porcine oviductal epithelial cells. *Mol Reprod Dev* 66:383-390
12

13 Mariscal DV, Bergfeld EGM, Cupp AS, Kojima FN, Fike KE, Sánchez T, Wehrman ME, Johnson RK, Kittok RJ,
14 Ford JJ, Kinder JE (1998) Concentrations of gonadotropins, estradiol and progesterone in sows selected
15 on an index of ovulation rate and embryo survival. *Anim Reprod Sci* 54:31-43
16
17

18 Mburu JN, Rodriguez-Martinez H, Einarsson S (1997) Changes in sperm ultrastructure and localisation in
19 the porcine oviduct around ovulation. *Anim Reprod Sci* 47:137-148
20
21

22
23
24 Motulsky H (1995) *Intuitive biostatistics*. New York: Oxford University Press.
25

26 Myrvang HK, Guo LC, Dekker LV (2013) Protein interactions between surface annexin A2 and S100A10
27 mediate adhesion of breast cancer cells to microvascular endothelial cells. *FEBS Lett* 587(19):3210-3215
28
29

30 Pacey AA, Freeman SL, England GC (2000) Contact of dog spermatozoa with homologous uterine tube
31 epithelium prolongs flagellar activity in relation to the stage of the estrous cycle. *Theriogenology*
32 *54(1):109-118*
33
34

35
36 Pacey AA, Hill CJ, Scudamore IW, Warren MA, Barratt CL, Cooke ID (1995) The interaction in vitro of
37 human spermatozoa with epithelial cells from the human uterine (fallopian) tube. *Hum Reprod* 10:360-
38 366
39
40

41
42 Rescher U, Gerke V (2004) Annexins—unique membrane binding proteins with diverse functions. *J Cell*
43 *Sci* 117:2631-2639
44
45

46 Singh P, Wu H, Clark C, Owlia A (2007) Annexin II binds progastrin and gastrin-like peptides, and
47 mediates growth factor effects of autocrine and exogenous gastrins on colon cancer and intestinal
48 epithelial cells. *Oncogene* 26(3):425-440
49
50

51 Smith TT, Yanagimachi R (1991) Attachment and release of spermatozoa from the caudal isthmus of the
52 hamster oviduct. *J Reprod Fertil* 91:567-573
53
54

55 Su SC, Maxwell SA, Bayless KJ (2010) Annexin 2 regulates endothelial morphogenesis by controlling AKT
56 activation and junctional integrity. *J Biol Chem* 285:40624-40634
57
58

1
2
3 Suarez SS (1987) Sperm transport and motility in the mouse oviduct: observations in situ. Biol
4
5 Reprod 36:203-210

6
7 Suarez SS (2008) Regulation of sperm storage and movement in the mammalian oviduct. Int J Dev Biol
8
9 52:455-462

10
11 Suarez S, Redfern K, Raynor P, Martin F, Phillips DM (1991) Attachment of boar sperm to mucosal
12
13 explants of oviduct in vitro: possible role in formation of a sperm reservoir. Biol Reprod 44(6):998-1004

14
15 Swisher JF, Burton N, Bacot SM, Vogel SN, Feldman GM (2010) Annexin A2 tetramer activates human and
16
17 murine macrophages through TLR4. Blood 115(3):549-558

18
19 Talevi R, Gualtieri R (2010) Molecules involved in sperm-oviduct adhesion and release. Theriogenology
20
21 73(6):796-801

22
23 Teijeiro JM, Igotz GG, Marini PE (2009) Annexin A2 is involved in pig (*Sus scrofa*) sperm-oviduct
24
25 interaction. Mol Reprod Develop 76:334-341

26
27 Teijeiro JM, Marini PE (2012) Apical membranes prepared by peeling from whole porcine oviducts
28
29 interact with homologous sperm. Cell Tissue Res 348(1):213-223

30
31 Thomas PG, Ball BA, Brinsko SP (1994) Interaction of equine spermatozoa with oviduct epithelial cell
32
33 explants is affected by estrous cycle and anatomic origin of explant. Biol Reprod 51(2):222-228

34
35 Töpfer-Petersen E, Wagner A, Friedrich J, Petrunkina A, Ekhlesi-Hundrieser M, Waberski D, Drommer W
36
37 (2002) J Exp Zool 292(2):210-215

38
39 Tummaruk P, Tienthai P (2010) Number of spermatozoa in the crypts of the sperm reservoir at about 24
40
41 h after a low-dose intrauterine and deep intrauterine insemination in sows. Reprod Domest Anim
42
43 45(2):208-213

44
45 Valapala M, Maji S, Borejdo J, Vishwanatha JK (2014) Cell surface translocation of annexin A2 facilitates
46
47 glutamate-induced extracellular proteolysis. J Biol Chem 289(23):15915-15926

48
49 Vedeler A, Hollås H, Grindheim AK, Raddum AM (2012) Multiple roles of annexin A2 in post-
50
51 transcriptional regulation of gene expression. Curr Protein Pept Sci 13(4):401-412

52
53 Waisman DM (1995) Annexin II tetramer: Structure and function. Mol Cell Biochem 149-150:301-322
54
55
56
57
58
59
60

1
2
3 Yamada A, Irie K, Hirota T, Ooshio T, Fukuhara A, Takai Y (2005) Involvement of the annexin II-S100A10
4 complex in the formation of E-cadherin-based adherens junctions in Madin-Darby canine kidney cells. J
5 Biol Chem 280:6016–6027
6

7
8 Zhang Q, Wu WX (2007) Separate and synergistic effect of progesterone and estradiol on induction
9 of annexin 2 and its interaction protein p11 in pregnant sheep myometrium. J Mol Endocrinol 38(4):441-
10 454
11
12
13

14 15 16 **Figure legends**

17
18
19
20 **Fig. 1** Annexin A2 and S100A10 are present at the apical cytoplasm of human and pig oviductal epithelial
21 cells
22

23
24 **(a)** Western blot of human and pig oviductal cell extracts (30 µg of protein) with HH7 anti-AnxA2 and
25 anti-S100A10 antibodies **(b)** Immunohistochemical localization of AnxA2 at the cilia of pig (I) and
26 human (III) and S100A10 at the apical cytoplasm of pig (II) and human (IV) oviductal epithelial cells. V
27 (pig) and VI (human), controls were performed without primary antibody and counterstained with
28 hematoxin. Bars are 20 µm. Inset shows 2.5 X digital magnification. Representative results of five
29 porcine and five human oviducts are shown
30
31
32
33
34
35

36
37
38 **Fig. 2** AnxA2 is present devoid of S100A10 at the outer surface of porcine oviductal cells apical
39 membranes, and in combination with S100A10 at their apical cytoplasm
40

41
42 Western blots with anti-AnxA2 and anti-S100A10 antibodies of protein extracts (30 µg) from **(a)** the
43 surface of oviductal epithelial cells with PBS extraction (1), and from membrane enriched fractions
44 successively extracted with 0.2% TritonX-100 (2) and 0.5 M NaCl (3), Ponceau staining of the membrane
45 is shown; and **(b)** membrane enriched, cytoplasmic and APM (peeling) fractions, prepared as described
46 in Materials and Methods; actin and tubulin detection were used as cellular compartment control. **(c)**
47 Proteins exposed at the oviductal lumen were biotinylated and purified based on biotin content, after
48 electrophoresis and blotting of the purified fraction (Biotinylated), biotinylated proteins detection
49 (upper), and western blot with anti-AnxA2 and anti-S100A10 antibodies (lower) were performed;
50 extract from tissue without biotinylating reagent treatment (Non-Biotinylated) was used as control. **(d)**
51
52
53
54
55
56
57
58
59
60

1
2
3 Immunoprecipitation of proteins from membrane enriched oviductal cell extracts with anti-AnxA2 was
4 followed by western blot with AnxA2 and anti-S100A10 antibodies (IP) and a control with irrelevant
5 mouse IgG (control), and only the expected bands corresponding to mouse IgG were detected.
6
7 Representative results of three repetitions are shown
8
9

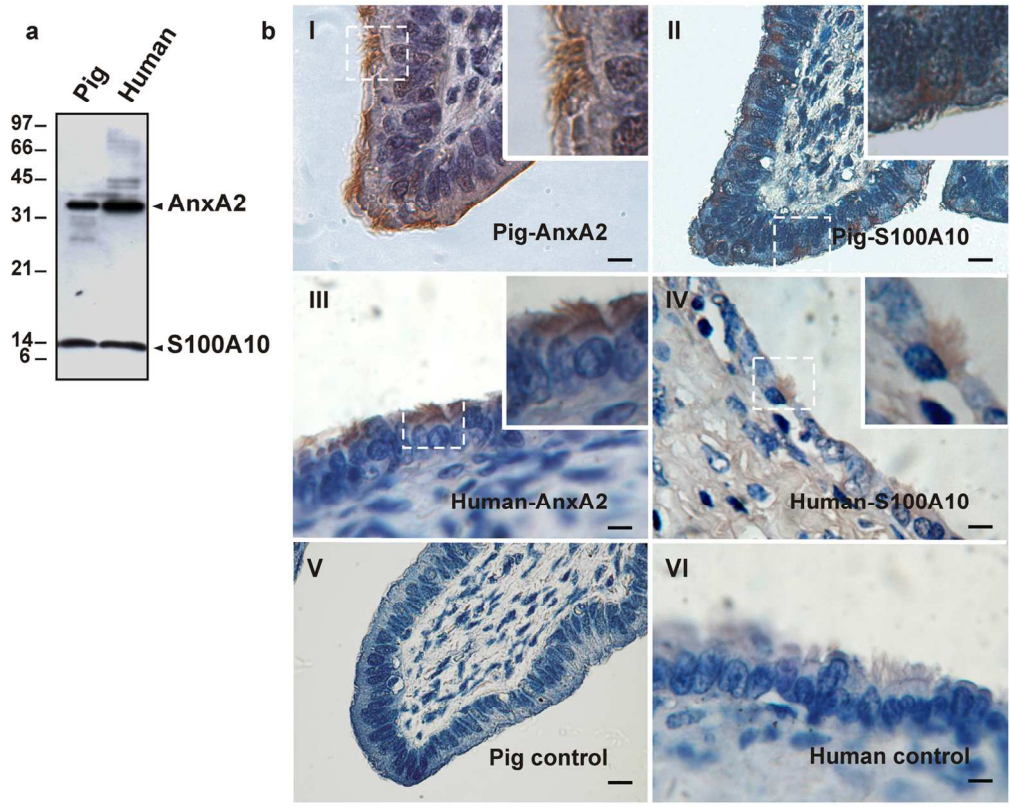
10
11
12
13 **Fig. 3** *ANXA2* and *S100A10* expression in porcine oviductal epithelial cells primary culture with ovarian
14 hormones
15

16
17
18 **(a)** Detection of AnxA2 and S100A10 by western blot in primary cell culture extracts (30 µg of protein)
19 from porcine oviductal cells treated with the noted concentrations of ovarian hormones, three
20 independent experiments using batches of 10 oviducts were performed. **(b)** Relative densitometric
21 analysis of AnxA2 and S100A10 detected in **(a)**. #, ##, ### and * indicate significant differences respect to
22 the control without hormones and between treatments, $p < 0.05$, $n=3$, Standard Errors are shown. **(c)**
23 Graphic representation of the bioinformatics analysis of: *ANXA2*, region 123368060 to 123368669 from
24 GeneBank NC_010443.4, composed by two predicted promoters, is shown. The two putative promoters
25 show overlapping (in red). A PRE (●) is predicted for the upstream promoter, and an ERE (●) for the
26 more downstream one; *S100A10*, region 106270261 to 106272464 from GeneBank NC_010446.4,
27 composed by two predicted promoters, is shown. An ERE
28 (●) is associated to each predicted promoter region. ERE and PRE sequences are shown in boxes.
29 Discontinuous lines indicate DNA sequences unrelated to the promoters
30
31
32
33
34
35
36
37
38
39
40
41
42
43

44 **Fig. 4** AnxA2 and S100A10 are detected in the oviducts of cow, cat, dog and rabbit
45

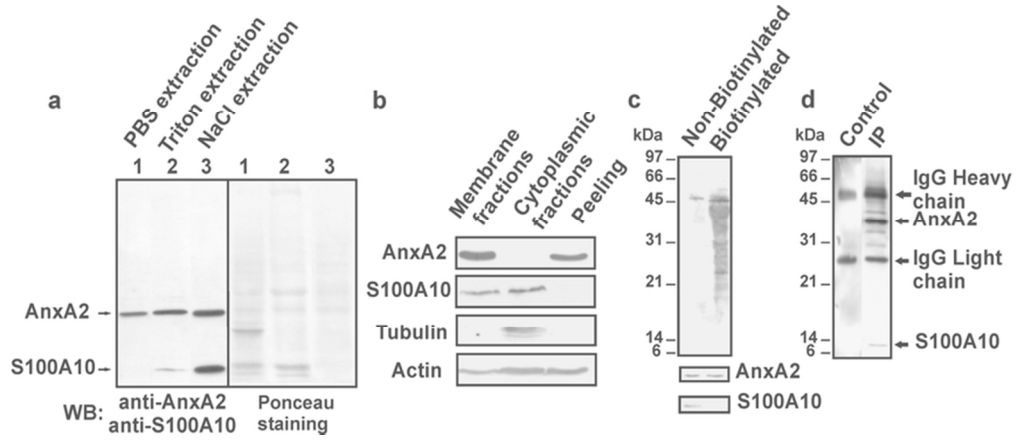
46
47 Western blot of membrane enriched protein extracts (30 µg of protein) from oviducts of the named
48 animals with anti-AnxA2 and anti-S100A10 antibodies
49
50
51
52
53
54
55
56
57
58
59
60

1
2
3
4
5
6
7
8
9
10
11
12
13
14
15
16
17
18
19
20
21
22
23
24
25
26
27
28
29
30
31
32
33
34
35
36
37
38
39
40
41
42
43
44
45
46
47
48
49
50
51
52
53
54
55
56
57
58
59
60



136x109mm (300 x 300 DPI)

Review

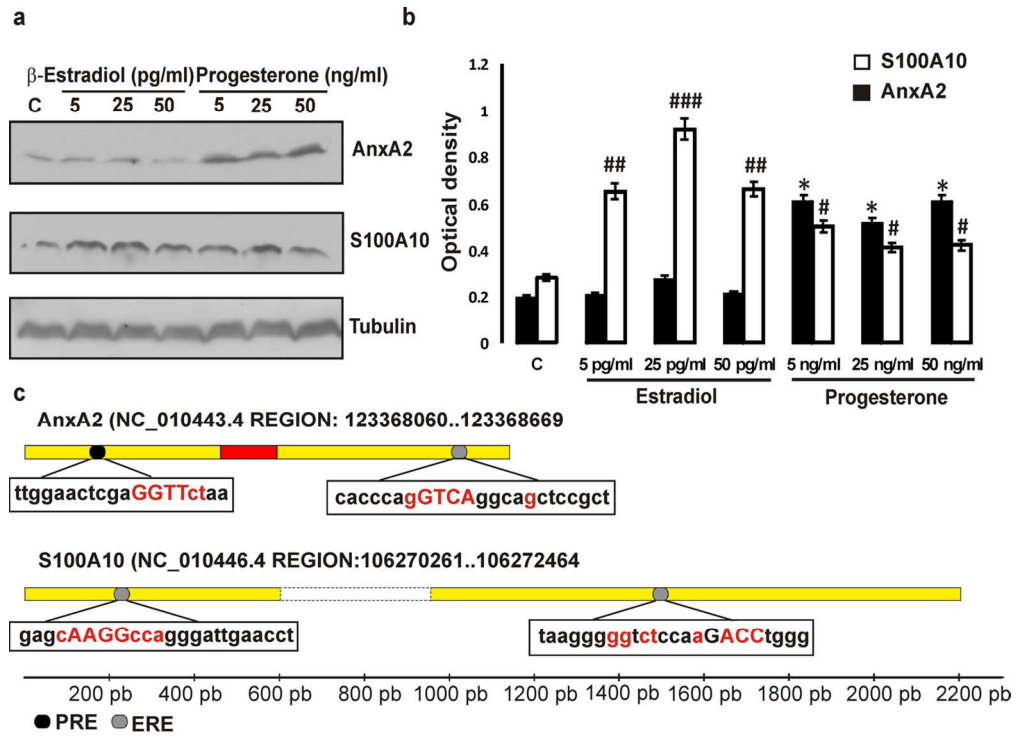


72x31mm (300 x 300 DPI)

Peer Review

1
2
3
4
5
6
7
8
9
10
11
12
13
14
15
16
17
18
19
20
21
22
23
24
25
26
27
28
29
30
31
32
33
34
35
36
37
38
39
40
41
42
43
44
45
46
47
48
49
50
51
52
53
54
55
56
57
58
59
60

1
2
3
4
5
6
7
8
9
10
11
12
13
14
15
16
17
18
19
20
21
22
23
24
25
26
27
28
29
30
31
32
33
34
35
36
37
38
39
40
41
42
43
44
45
46
47
48
49
50
51
52
53
54
55
56
57
58
59
60



123x89mm (300 x 300 DPI)

Review

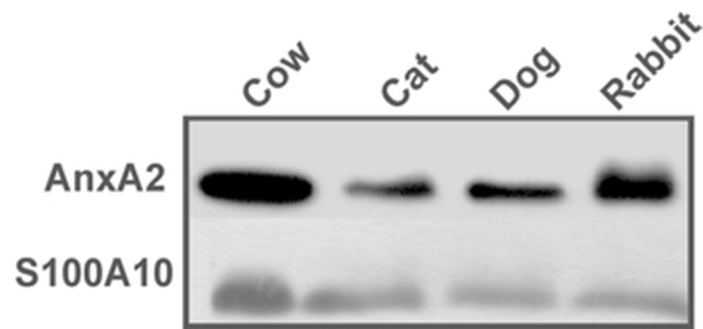


Fig. 4 AnxA2 and S100A10 are detected in the oviducts of cow, cat, dog and rabbit
Western blot of membrane enriched protein extracts (30 μ g of protein) from oviducts of the named animals
with anti-AnxA2 and anti-S100A10 antibodies

29x13mm (300 x 300 DPI)

Peer Review

1
2
3
4
5
6
7
8
9
10
11
12
13
14
15
16
17
18
19
20
21
22
23
24
25
26
27
28
29
30
31
32
33
34
35
36
37
38
39
40
41
42
43
44
45
46
47
48
49
50
51
52
53
54
55
56
57
58
59
60